



SAN REMO (M.80 Gents)

Frame: 21", 22", 23" and 24", 531 Tubing, Italian design frame with long point Continental Lugs, Wrap-over Seat Stays. Forks: Reynolds 531 fine taper blades, Italian style sloping fork crown, chrome plated. Wheels: 27 x 1 1/2" High Pressure, large Range Hubs, built with double butted spokes. Saddle: Brooks B.15.N. Handlebars: G.B. on forged stem. Brakes: Centre Pull Weinmann 999 Quick Release. Pedals: Lyotard. Gear: Campagnolo Gran Sport five speed. FINISH: RACING BLUE, matching accessories.

Replica of Model used by our Racing Team. Frame: 20 1/2", 21", 22", 23", 24" Specialist Lugs cut and filed to our design. Reynolds 531 Butted Tubing throughout. Forks: Oval 1 1/2" rake forged crown. Wheels: Weinmann Sprints on quick release A.H.11 or Campagnolo Hubs, Clement Tubulars. Saddle: B.17. Chainwheel Set: Williams or Campagnolo with cotterless cranks. Chain: Brampton 3/32. Gear: Huret or Campag. Twin Lever 10 Speed. Bend & Stem: G.B. on forged stem. Pedals: Quill Pattern. Brakes: Weinmann Q.R. Seat Pillar: Campagnolo. Equipment: Down Tube Bottle Carrier and Bottle. FINISH: RACING BLUE, Chrome Forks and Rear Ends.

SAN REMO EQUIPE (M.76 Gents)



SAN REMO 'MK. II' (M.90 Gents)

Frame: 21", 22", 23", 24", Prugnat Lugs. 531 Butted Tubing. Forks: Oval 2" rake. Wheels: Weinmann High Pressure Rims on S.F. Hubs, Q.R. Saddle: B.17. Chainwheel Set: Campagnolo Double, Cotterless. Gear: Campagnolo 10 Speed. Bend & Stem: G.B. on forged stem. Brakes: Weinmann 999. Seat Pillar: Campagnolo. Equipment: Down Tube Bottle and Carrier. FINISH: RACING BLUE with Chrome Front and Rear Ends.

MODEL 96
Frame: 21", 22", 23", 24", Prugnat Lugs, angles 74/73". Seat stays 1" dia. Forks: Round, 1 1/2" rake. Wheels: Sprint Rims on L.F. Hubs, Clement Tubulars. Chainwheel Set: Cotterless 1" x 1". Pedals: Quill Pattern. Handlebars: G.B. to choice. Saddle: B.17. FINISH: Any Enamelled Colour.

MODEL 98
Frame: 21", 22", 23", 24", Angles 74/73". Seat stays 1" dia. Forks: Round, 1 1/2" rake. WHEELS: Sprint Rims on L.F. Hubs, Clement Tubulars. Chainwheel Set: Cotterless. Pedals: Quill Pattern. Handlebars: Cinelli or G.B. to choice. Saddle: B.17. FINISH: RACING BLUE, with matching seat Panel. Model 98 Chrome Front and Rear Ends.

SAN REMO 'SPRINT' (M.98 Gents)
SAN REMO 'PURSUIT' (M.96 Gents) Not illustrated



SUPER TOURIST DE LUXE

Frame: 21", 22", 23", 24", 531 Butted Tubing, Continental pattern lugs, finely tapered Oval Forks, Brazed on Lamp Boss. Wheels: 27 x 1 1/2" Weinmann Alloy, Alloy Hubs. Handlebars: G.B. Alloy, allround pattern, on alloy stem. Brakes: Alloy side pull. Saddle: Brooks De Luxe. Archer 3/4 Speed Hub. Chainwheel Set: Williams "Duree". FINISH: BRILLIANT BLACK with Chrome Front Fork Ends, matching accessories including Holdall, Touring Bag and Inflator. WEIGHT: 27 lbs.



SUPER TOURIST

Frame: 21" or 23", Continental pattern lugs, finely tapered oval forks. Wheels: 27" with Sturmey-Archer F.W. 4 speed hub. Alloy Allround or Comfort Bars. Brakes: Weinmann Alloy Tourist. Saddle: Brooks De Luxe with Mattress top. Mudguards: Blumels. Pedals: Reflector type. FINISH: FLAMBOYANT BURGUNDY/GOLD. Accessories — Large Touring Bag, Inflator, and Rear Reflector.

A WELL-KNOWN M.P. ONCE SAID: "NOTHING CAN GIVE SUCH FREEDOM - SUCH HEALTH - SUCH PLEASURE - SUCH VARIETY - SUCH INTEREST AS CYCLING" - WE WOULD ADD "ESPECIALLY ON A FALCON."

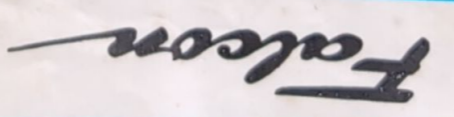
THE REAL LIGHTWEIGHT TOURIST RANGE...



Cyclists off for a training spin at the Falcon Majorca Camp

HAND BUILT FOR THE ENTHUSIASTS

LIGHTWEIGHT CYCLES



Falcon LIGHTWEIGHT CYCLES
WILLS STREET
SMETHWICK
BIRMINGHAM 40
Telephone: Smethwick 1871

YOUR LOCAL STOCKIST

Mark	CYCLES	Recommended Retail Price	Including Purchase Tax	Recommended Retail Price
60/61	Campagnolo 5 speed Gear	£ 30 0	£ 33 0	£ 30 0
66	Campagnolo 10 speed Gear	£ 30 0	£ 33 0	£ 30 0
70/71	Campagnolo Small Flange Quick Release Hubs	£ 40 0	£ 43 0	£ 40 0
76	Campagnolo Large Flange Quick Release Hubs	£ 40 0	£ 43 0	£ 40 0
78	Campagnolo Small Flange Quick Release Hubs	£ 40 0	£ 43 0	£ 40 0
80	Campagnolo Large Flange Quick Release Hubs	£ 40 0	£ 43 0	£ 40 0
82/83	Campagnolo 10 speed Gear	£ 30 0	£ 33 0	£ 30 0
88/89	Campagnolo 5 speed Gear	£ 30 0	£ 33 0	£ 30 0
90	Campagnolo 10 speed Gear	£ 30 0	£ 33 0	£ 30 0
96	Campagnolo 5 speed Gear	£ 30 0	£ 33 0	£ 30 0
98	Campagnolo 10 speed Gear	£ 30 0	£ 33 0	£ 30 0



Every Falcon cycle is designed and hand-built by a team of craftsmen under the personal supervision of Mr. E. A. Clements. He advises all cyclists to become members of one of the recognised Cycling Organisations, e.g. if keen on racing - The British Cycling Federation, 26/29 Park Crescent, London, W.1. If you prefer touring - The Cyclists' Touring Club, Cotterell House, 69 Meadrow, Godalming, Surrey.

Falcon

Mr. and Mrs. Tim Kelly with Mr. E. A. Clements at the Six Pins Hotel, Pollensa, the Camp Headquarters



The Lightweight Cycle

PARAGON SPORTS

(M.60 Gents, M.61 Ladies)



Frame: Gents 19", 21", 22" and 23". Ladies 21" only. Continental pattern Lugs, oval Forks. **Wheels:** 27 x 1 1/2" Endrick, 19" Model with 26" Wheels. **Gear:** Svelto Five speed. **Saddle:** Narrow racing pattern. **Mudguards:** Matching Colour. 18" Alloy Inflator. **Handlebars:** Alloy Maes Pattern. **Brakes:** Weinmann Centre Pull. **STANDARD COLOUR:** GOLD or METALLIC BLUE, with contrasting Head Panels and Matching Equipment.

Happy cyclists enjoying the first ever Falcon Majorca Training Camp



A group of riders near the Monastery at Pollensa



Waiting for the 'off' from the Team Car



Riders competing on the small cycle track at Pollensa

Among the many personalities at the Falcon Training Camp were TOMMY SIMPSON - World Champion and TIM KELLY - U.S.A. Champion; Trainers included TOMMY GODWIN (former National Coach), BILL HOLMES (Falcon Team Captain) and BRIAN ROBINSON (Tour de France Stage Winner). Many boys who visited the Training Camp expressed the wish that Falcon should organise another camp at some time in the future.

Gears fitted and recommended by Falcon

"SVELTO" 2000



OLYMPIC

(M78 Gents)



Frame: 21", 22", 23" and 24" built with Reynolds 531 tubing. **Forks:** Oval to Round. **Wheels:** 27 x 1 1/2" High Pressure, large flange Hubs. **Handlebars:** Alloy on alloy stem. **Brakes:** Weinmann Centre Pull 999 Quick Release. **Saddle:** Brooks B.15N. **Gear:** Campagnola Gran Sport Five Speed. **FINISH:** BRONZE/BLACK or PURPLE FLAMBOYANT/LILAC.

MAJORCA

(M.64 Gents)



Frame: 21", 22" and 23". **Wheels:** 27" x 1 1/2" Endrick. **Gear:** Five Speed Svelto. **Saddle:** Narrow Racing Pattern. **Handlebars:** Alloy Maes pattern. **Brakes:** Weinmann Side Pull. **Inflator:** 18" Alloy. **Mudguards:** Matching Colour. **FINISH:** DEEP METALLIC GREEN OR NEW METALLIC RED, with 6" chromium plated Front Fork Ends. Chrome panel on Seat Tube with splendid decoration and contrasting colours.

SUPER ROUTE

(M.66 Gents)



Gents 21", 22", 23" and 24". **Frame:** Continental pattern Lugs, built with 531 frame tubes. **Forks:** Oval Blades Fine Taper. **Wheels:** 27 x 1 1/2" high pressure, large flange hubs, Handlebars: G.B. alloy on forged stem. **Brakes:** Weinmann Centrepull. **Gear:** 5 speed Huret. **Mudguards:** Matching Colour. **Saddle:** Brooks B.15. **Finish:** BRONZE/COFFEE or RED/BLACK.

Clement

The World's finest range of hand-made Italian Tubular Racing Tyres. These are fitted and supplied by Falcon; Price List on request.



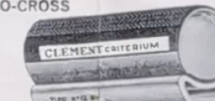
TYPE 22 GRAN SPORT



TYPE 20 CLEMENT 48



TYPE 15 CYCLO-CROSS



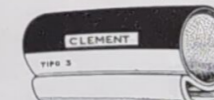
TYPE 12 BIS CRITERIUM



TYPE CLEMENT 50



TYPE CRITERIUM SILK No. 6



TYPE CLEMENT SILK No. 3



TYPE ELVEZIA No. 24



TYPE GRIFO 61



TYPE CRITERIUM SILK 1 BIS



TYPE CHAMPION DU MONDE No. 13

BLACK DIAMOND

(M.70 Gents, M.71 Ladies)



Frame: Gents 19", 21", 22" and 23". Ladies 21" only. Upright angles. **Forks:** Oval Blades with fine taper. **Wheels:** 27 x 1 1/2" High Pressure with narrow barrel Hubs. 19" Model with 26" Wheels. **Handlebars:** G.B. Alloy 15/16" dia. **Stem:** Alloy 21" forward. **Brakes:** Weinmann Centre Pull. **Saddle:** Narrow racing pattern. **Gear:** Huret 5 Speed. **Mudguards:** Matching Colour. **Pedals:** Racing Pattern. **STANDARD FINISH:** FLAMBOYANT RED or FLAMBOYANT PURPLE with matching Equipment.

A Model designed for general Club use.



GEARS
HUBS
CHAINSETS

Fitted to San Remo Equipé

SAN REMO 'Mk III'

(M. 92 Gents)



Frame: 21", 22", 23" and 24". Continental Lugs, Oval Forks (no Lamp Boss). **Wheels:** Weinmann Sprint wheels, small flange Quick Release Hubs. **Tyres:** Clement Tubular. **Saddle:** Brooks B.15. **Brakes:** Weinmann Centre Pull 999. **Handlebars:** G.B. Maes on Alloy Stem. **Inflator:** 18" Alloy. **Gear:** Svelto Five Speed. **Chainset:** Williams. **FINISH:** RACING BLUE OR ORANGE ENAMEL with contrasting panels. Chromium Plated Front Fork Ends. N.B. Mudguards not fitted to this model.

We are indebted to Mr. J. B. Wadley, Editor of 'Sporting Cyclist' for the photographs of the first ever Falcon Majorca Training Camp

HOLMES & ROGERS (PRINTERS) LTD WOLVERHAMPTON