



**This document is brought to you by courtesy of
the National Cycle Archive
In partnership with the
Veteran-Cycle Club**

Please acknowledge the source if you refer to this material.

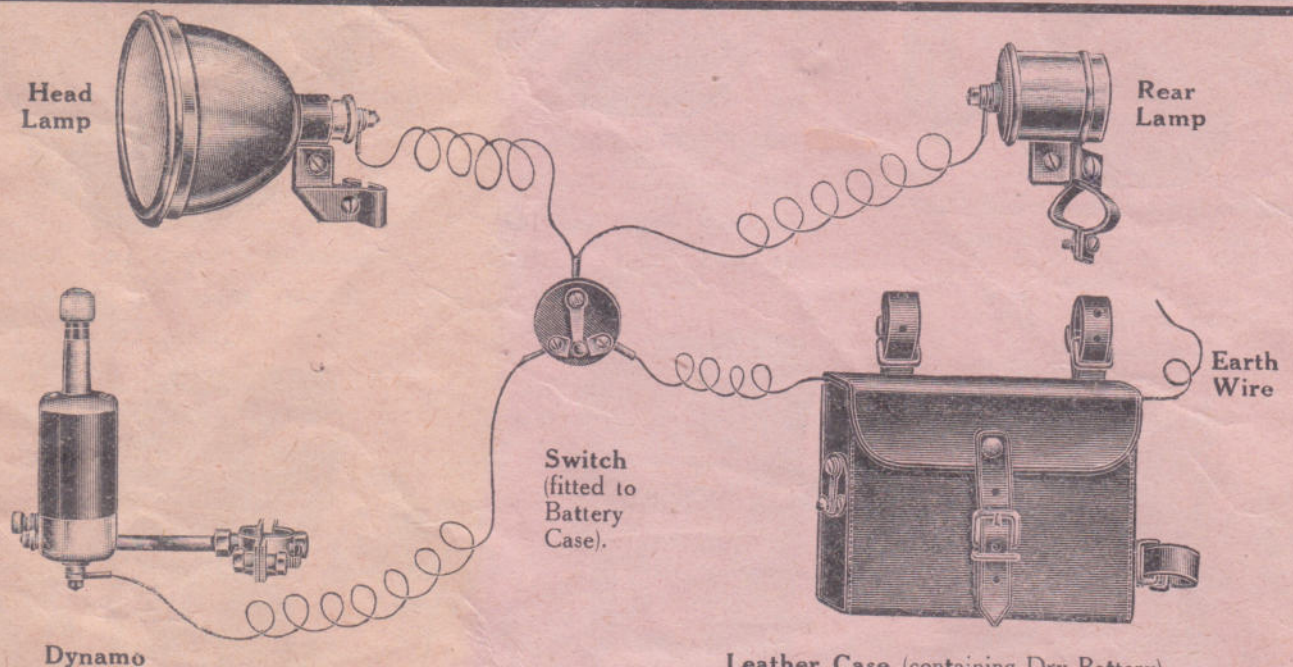
Find out more about the National Cycle Archive [here](#)



CYCLE LAMPS

1923-24 SEASON.

In this List we are giving only the Current Prices of the New Lines, Improved Models and best Sellers for the opening up of the Season. Traders should refer to 1923 Price List for others not shown or mentioned here.



THE "TALMO" DYNAMO CYCLE LIGHTING SET

is now supplied

With Dry Battery Attachment

To enable Lamps to be used when stationary.

This is included **WITHOUT EXTRA CHARGE.**

No. 3566m Complete Set, as above, with Front and Rear Lamps per set	18/-	... (Retail 24/-)
	lots of 1 doz.	17/9	
No. 3566k Ditto, ditto, with Front Lamp only per set	16/3	... (Retail 21/6)
	lots of 1 doz.	16/-	

Supplied to fit Ladies' or Gents' Machines. State which is required as wiring installation differs. The Sets comprise Dynamo, Dry Battery in good quality leather case fitted with switch, and lamps (either combined Front and Rear or Front only).

THE "TALMO" DYNAMO is the lightest on the market (weighs only 8 ounces)

Protected under Dufaux's Patents.

This form of Lighting for Bicycles undoubtedly fills a long-felt want amongst cyclists, as it is an exceptionally handy method. The dirty job of filling up with oil or carbide is eliminated. The dry battery is fitted on as an extra attachment to enable the lamps to be lit up when stationary.

The lamps can always be carried on the machine. No need to hurry home before dark because you have no lamp. Your "Talmo" is there and in readiness all the time. The "Talmo" can be fitted to any standard bicycle. Orders should state whether for Ladies' or Gents' Machines, as the wiring differs slightly.

The Dynamo or Dry Battery can be used at option. When machine is stationary or rider is held up by traffic, all that is necessary for continuous lighting is to move the switch handle (on battery case) to opposite terminal.

The Dynamo is made on improved scientific principles, and is very light indeed, weighing only 8 ounces.

This is made to fit on the front forks to run on the rim, and can be operated "on" or "off" by one simple switch movement, either while the machine is being ridden or stationary.

The fitting is quite simple, and the whole Set can be easily attached to a bicycle in a short time by any inexperienced person, by following the directions enclosed in the box. The Contact Screw in fork clip must be screwed up to cut through the enamel on fork to ensure complete circuit.

Each Set is neatly boxed and comprises Dynamo with clip for the Front Fork, Head Lamp complete with bulb and bracket, Rear Lamp complete with bulb and bracket. Best quality Dry Battery in leather case, fitted with 2-way switch, complete Wiring Installation, 5 clips for attaching wires to frame, spare pulley for the Dynamo, and directions for fitting.

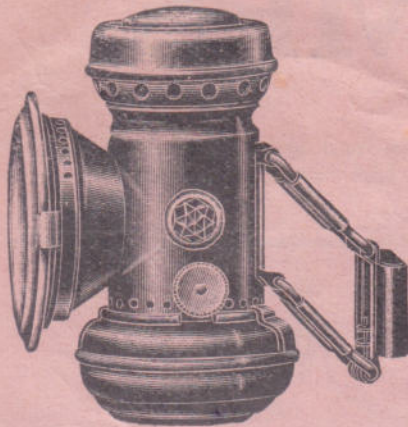
CONVENIENCE, APPEARANCE, CLEANLINESS and LOW MAINTENANCE COST
 Are Some of the Factors that have gone towards Creating the Popularity of the
"TALMO" DYNAMO ELECTRIC LIGHTING SET FOR BICYCLES.

The Prices given in this leaflet are Nett Wholesale Prices, subject to the following Settlement.
 Discounts only : 2½ per cent. approved Monthly Account, or 3½ per cent. Cash with Order.

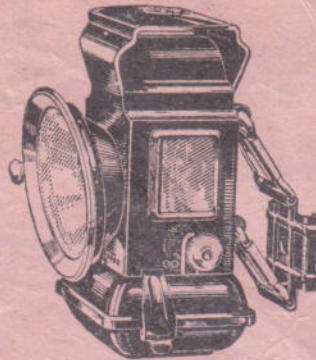
Orders for these goods value £5 and upwards sent to our customers in Great Britain will be forwarded Carriage Paid by Goods Train.

BROWN BROTHERS, Ltd.

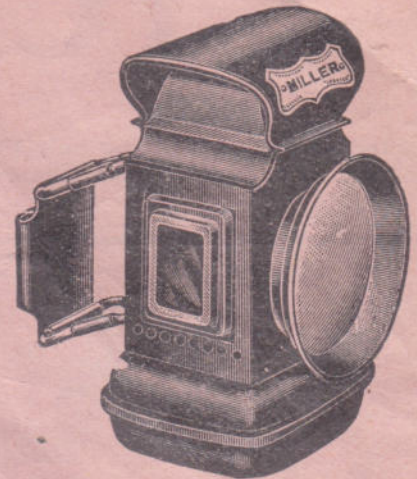
With which is amalgamated
 Thomson & Brown Brothers, Ltd.



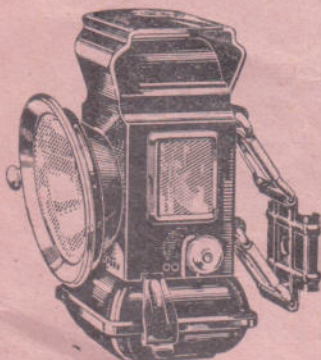
THE "OPERA" FRONT OIL LAMP
 New Line for 1923/4 season.
 No. 3420a Enamelled Finish
 per doz. ... 12/-
 Gross lots " 11/9
 5 gross lots " 11/6
 (Retail 1/5)



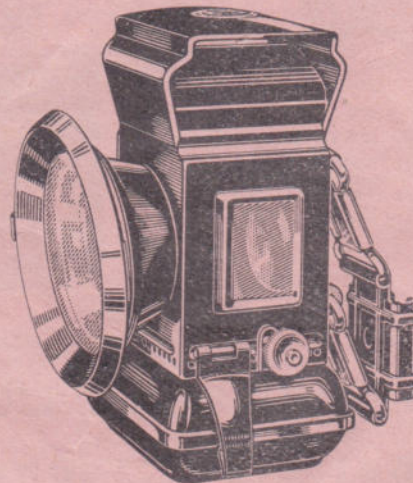
THE "STAR" FRONT OIL LAMP.
 Improved for 1923/4.
 per doz.
 No. 3422a Ebony black 16/-
 (Retail 1/9)
 No. 3422b Plated ... 23/-
 (Retail 2/6)



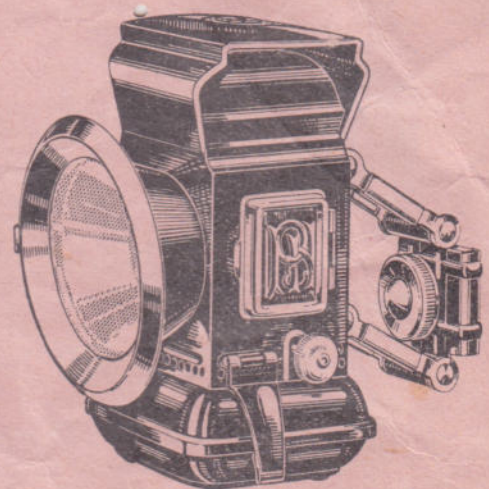
MILLER'S "POPULAR" FRONT LAMP.
 No. 3471x Ebony black (No. 99j)
 per doz. 15/-
 (Retail 1/8)



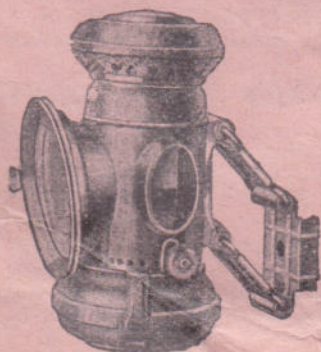
P. & H. "DEMON" FRONT OIL LAMP.
 Improved Design for 1923/4
 per doz.
 No. 3441a Ebony black 16/-
 (Retail 1/9)
 No. 3441b Plated ... 23/-
 (Retail 2/6)



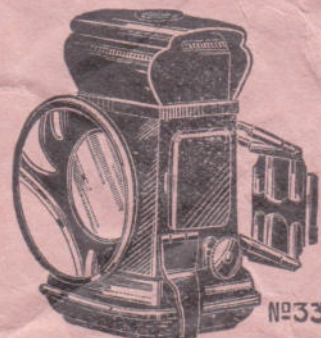
P. & H. "DEMON KING" FRONT OIL LAMP.
 New Line for 1923/4 season
 No. 3440a Ebony black per doz. 18/-
 (Retail 2/-)
 No. 3440b Plated ... per doz. 25/
 (Retail 2/9)



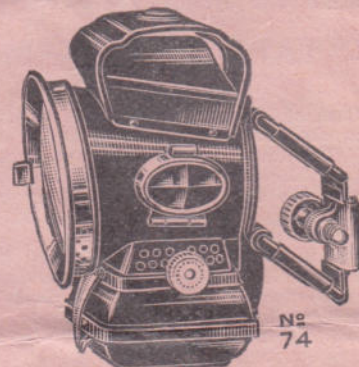
P. & H. "CITADEL" FRONT OIL LAMP.
 Improved Design for 1923/4.
 No. 3443a Enamelled ... per doz. 36/-
 (Retail 4/-)
 No. 3443b Plated ... per doz. 45/
 (Retail 5/-)



P. & H. "COLONEL" PETROLEUM FRONT LAMP
 (No. 6B.)
 Burns paraffin or kerosene.
 per doz.
 No. 3448p Plated ... 44/-
 (Retail 4/10)



LUCAS' "PLANET" LAMP
 No. 33
 per doz.
 No. 3453c Ebony black
 (No. 33b) ... 18/-
 (Retail 2/-)
 No. 3453d Plated
 (No. 33) ... 27/-
 (Retail 3/-)

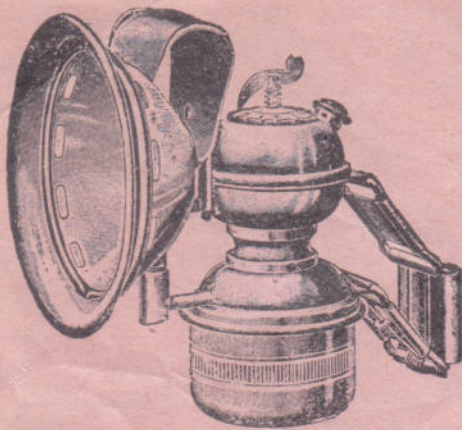


LUCAS' "BLACK PRINCE"
 New line for 1923/4.
 per doz.
 No. 3451p Ebony black 94/6
 (Retail 10/6)
 Ready in November, 1923.

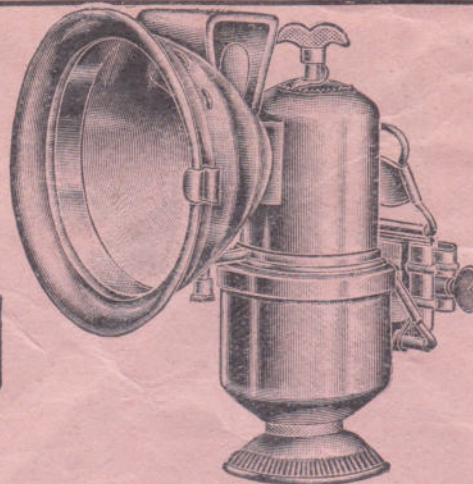
Orders for these goods value £5 and upwards sent to our customers in Great Britain will be forwarded Carriage Paid by Goods Train

BROWN BROTHERS, Ltd.,

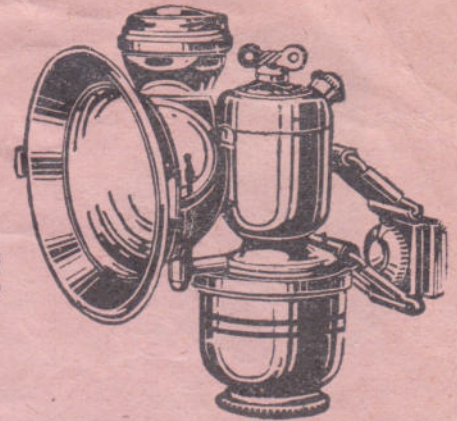
With which is amalgamated
THOMSON & BROWN BROTHERS, Ltd



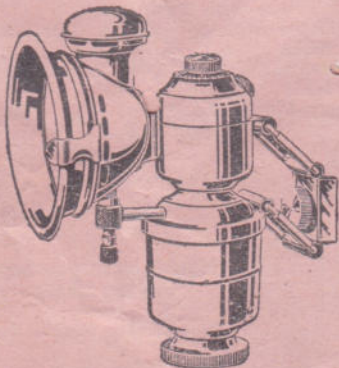
No. 3526a ACETYLENE LAMP. Plated.
Per doz. 25/6 Gross lots per doz. 25/6
(Retail 3/-)



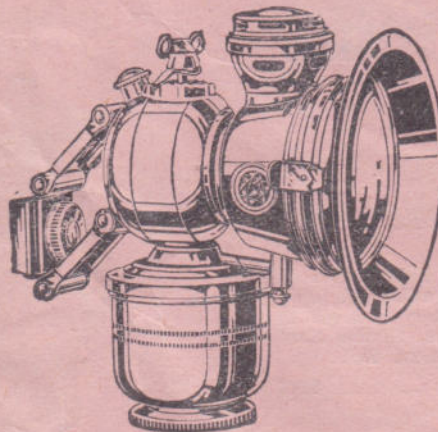
No. 3526k ACETYLENE LAMP
Plated.
Per dozen ... 39/6
(Retail 4/6)



THE "ETONIAN" ACETYLENE LAMP
No. 3532a Nickel plated on brass per doz. 49/6
No. 3532b Ebony black on brass per doz. 49/6
(Retail 5/6)

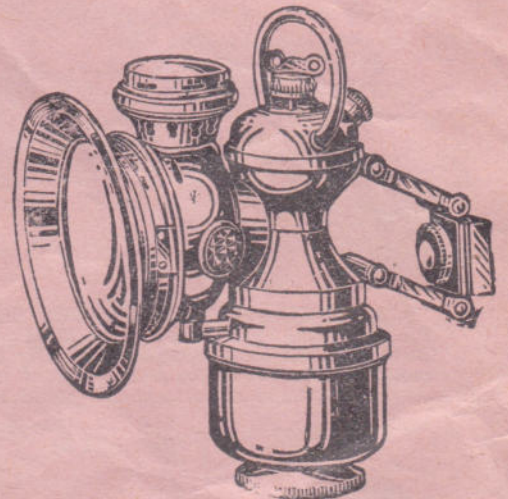


THE "MARCO" ACETYLENE LAMP.
Improved Design.
No. 3534a Nickel plated
on brass ... per doz. 48/-
(Retail 5/6)



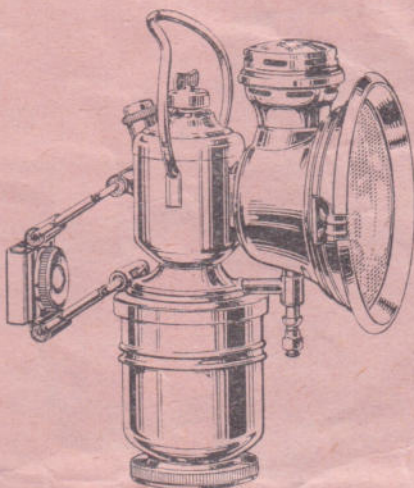
THE "RIVAL" ACETYLENE LAMP.

No. 3535a Nickel plated on brass per doz. 76/-
" 3535b Ebony black on brass 76/-
(Retail 8/6)

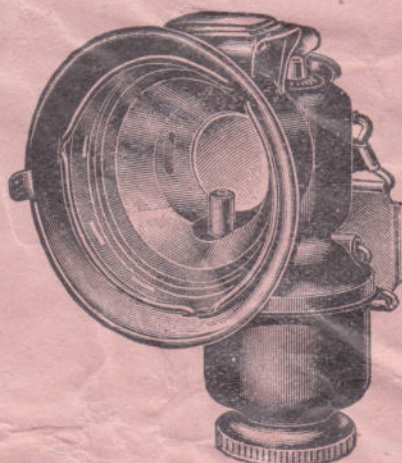


THE "CLARENDON" ACETYLENE LAMP.

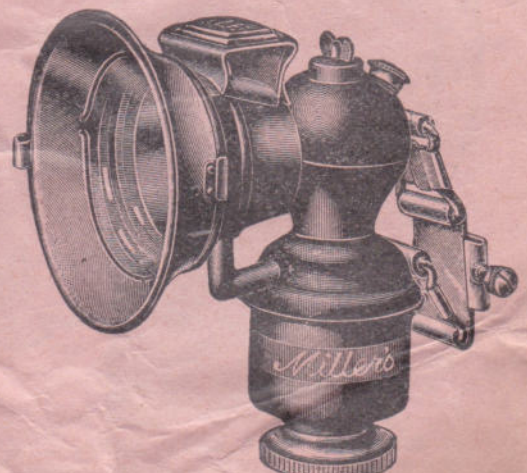
No. 3535d Nickel plated on brass per doz. 112/-
" 3535e Ebony black on brass 112/-



P. & H. PANTHER DE LUXE
No. 21, with Bail Handle.
New line for 1923/4.
No. 3549a Plated per doz. 58/-
(Retail 6/6)



MILLER'S "MITO" ACETYLENE LAMP (No. 159a)
No. 3541r Plated ... per doz. 50/-
(Retail 5/6)



MILLER'S "CARBO" ACETYLENE LAMP (No. 2a).
No. 3541m Plated ... per doz. 67/-
(Retail 7/6)

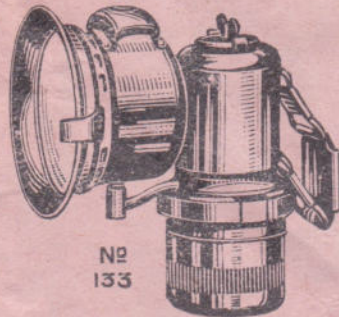
Orders for these goods value £5 and upwards sent to our customers in Great Britain will be forwarded Carriage Paid by Goods Train.

BROWN BROTHERS, Ltd.,

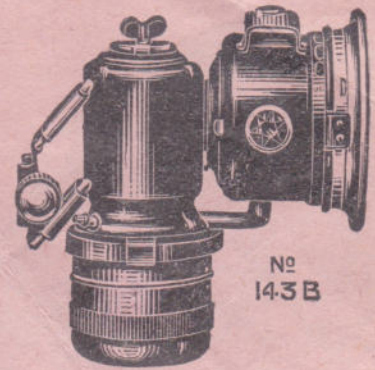
With which is amalgamated
THOMSON & BROWN BROTHERS, Ltd.



LUCAS' REAR LAMP.
 No. 3453p Ebony Black,
 (No. 23T) per doz. 18/-
 (Retail 2/-)



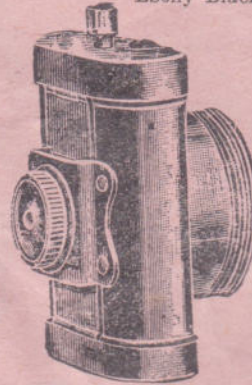
LUCAS' "CALCIA CADET."
 Acetylene Lamp, with 2 1/4" domed glass.
 No. 3555a
 Nickel plated (No. 133) per doz. 49/6
 No. 3555b
 Ebony Black (No. 133b) " 49/6
 (Retail 5/6)



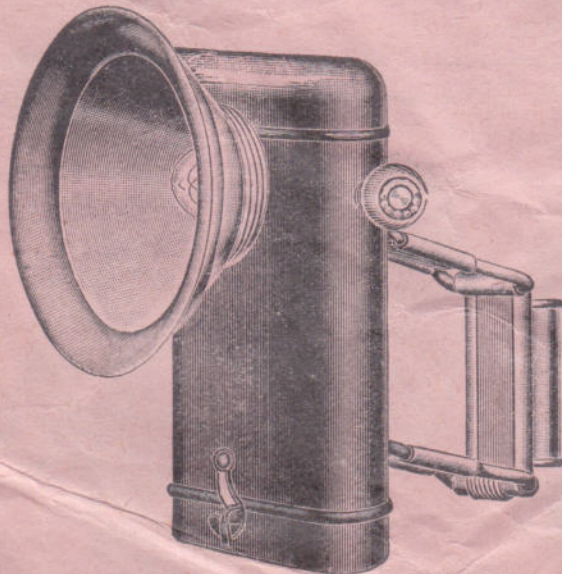
LUCAS' "CALCIA CLUB"
 Acetylene Lamp with 3 1/4" domed glass.
 No. 3555p
 Nickel plated (No. 143) per doz. 79/-
 No. 3555r
 Ebony Black (No. 143b) " 79/-
 (Retail 8/9)
LUCAS' "CALCIA CLUB"
 Acetylene Lamp, with attachment for
 use with Rear Lamp.
 Fitted with 3 1/4" Domed Glass.
 No. 3555s
 Nickel plated (No. 143t) per doz. 83/-
 No. 3555t
 Ebony Black (No. 143tb) " 83/-
 (Retail 9/3)



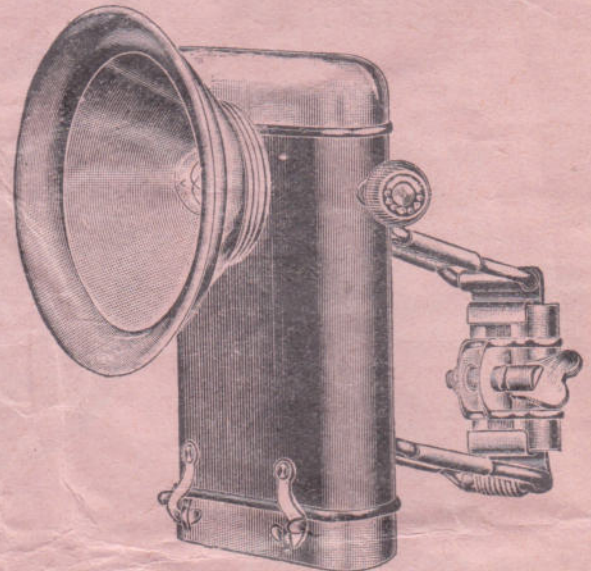
No. 3576a **ELECTRIC HEAD LAMP.** Enamelled finish with
 Plated Mounts and Spring Bracket fitted with adjustable clip.
 Double Convex Lens, complete with Dry Battery enclosed in
 metal case to fit on top back stays of frame, flexible Cord
 with plug-in attachment and Metal Filament Bulb.
 Each 7/- Per dozen 82/6
 (Retail 10/6)



Ever-Ready "Popular"
Electric Lamp.
 No. 3575f each 5/8
 (Retail 8/6)



No. 3576k **ELECTRIC HEAD LAMP.** Black enam-
 elled finish with plated front and Spring Bracket,
 with Convex Glass, complete with Dry Battery and
 Metal Filament Bulb.
 Each 2/3 Per dozen 26/-
 (Retail 3/3).



No. 3576m **ELECTRIC HEAD LAMP.** Black enam-
 elled finish with plated front and plated mounts,
 Spring Bracket with adjustable clip, with Convex
 Glass, complete with Dry Battery and Metal Filament
 Bulb.
 Each ... 2/6 Per doz. 29/-
 (Retail 3/9)

Orders for these goods value £5 and upwards sent to our customers in Great Britain will be forwarded Carriage Paid by Goods Train.

BROWN BROTHERS, LTD., With which is Amalgamated THOMSON & BROWN BROTHERS, Ltd

WHOLESALE AND RETAIL PRICES OF CYCLE LAMPS 1923-24 SEASON.

B.B.L. (OIL).			
List No.		Trade per doz.	Retail each
3420a	" B.B.L." " Opera " Front Lamp, enamelled	12/-	1/5
	gross lots	11/9	
	5 gross lots	11/6	
3421a	" Standard " Front Lamp, enamelled	12/-	1/4
3421c	" " Rear " "	12/-	1/4
3421f	" Duplex Lamp, enamelled, with white front glass and red rear glass	16/-	2/-
3422a	" Star " Front Lamp, enamelled	16/-	1/9
3422b	" " " " plated	23/-	2/6
3422c	" Rear Lamp, enamelled	16/-	1/9
3424a	" Little Billie " Front Lamp, enamelled	26/-	3/6
3424b	" " " " plated	29/6	4/-
3425a	" Bounder " Front Lamp, enamelled	30/-	4/9
3425b	" " " " plated	49/-	5/9
3426b	" Twin Century " Front Lamp, plated	45/-	5/-
3426t	" " " Rear " "	40/-	5/-
3426w	" Ensign " Front Lamp, enamelled	25/-	2/10
3426x	" " " " plated	32/-	3/7
3426z	" Rear Lamp, enamelled	22/-	2/8
3427a	" Butterfly " Front Lamp, enamelled	49/-	5/6
3427b	" " " " plated	44/-	6/-
3428a	" Midnight Sun " Front Lamp, ebony black	50/-	6/6
3428b	" " " " " plated	54/-	7/9
3429a	" Bronko " Front Lamp, plated	72/-	10/9
3430b	" Halycon " Front Lamp, plated	90/-	10/-
3433a	" Coaster " Front Lamp, plated	90/-	10/-

POWELL & HANMER (OIL).

List No.		per doz.	each
3440a	" Demon King " Front Lamp, ebony black	18/-	2/-
3440b	" " " " " plated	25/-	2/9
3441a	" Demon " Front Lamp, ebony black	16/-	1/9
3441b	" " Front Lamp, plated	23/-	2/6
3441c	" Rear Lamp, ebony black	16/-	1/9
3441f	" Duplex Lamp, No. 10D, ebony black	29/-	3/3
3441g	" Duplex Lamp, No. 10D, plated	34/-	3/9
3441p	" Petroleum Front Lamp, plated (No. 11B)	24/-	3/9
3441t	" Duplex Petroleum Lamp, plated (No. 11D)	45/-	5/-
3441x	" Leader " Front Lamp, enamelled	12/6	1/6
3442a	" Referee " Front Lamp, enamelled	27/-	3/6
3442b	" " " " " plated	34/-	4/-
3443a	" Citadel " Front Lamp, enamelled	36/-	4/-
3443b	" " " " " plated	45/-	5/-

POWELL & HANMER (OIL)—Continued

List No.		per doz.	Retail each
3444a	" Horoscope " Front Lamp, ebony black	90/-	10/-
3444b	" " " " " plated	90/-	10/-
3444f	" Zephyr " Front Lamp, plated	90/-	11/6
3446a	" Kingfisher " Front Lamp, plated	72/-	8/-
3446f	" Dictator " Front Lamp, plated	54/-	7/-
3448a	" Corsair " Front Lamp, ebony black	40/-	4/6
3448c	" " " " " plated	45/-	5/-
3448d	" Petroleum Front Lamp, plated (No. 66B)	57/-	6/3
3448f	No. 5 " Colonel " Front Lamp, plated	33/-	3/9
3448h	" " " " " enamelled	29/-	3/3
3448l	" Colonel " Duplex Lamp (No. 5D) ebony black	38/-	4/3
3448m	" " " " " plated	44/-	4/10
3448p	" Petroleum Front Lamp (No. 6B) plated	44/-	4/10
3448t	" Duplex Petroleum Lamp plated (No. 6D)	54/-	6/-
3448z	No. 3 " Colonel " Rear Lamp, enamelled	29/-	3/3

LUCAS' (OIL).

List No.		per doz.	each
3451b	" Silver King " Front Lamp (No. 300) plated	148/6	16/6
3451c	" " " " (No. 300b) ebony black	148/6	16/6
3451k	" Captain " Front Lamp (No. 59) plated	76/6	8/6
3451L	Ditto ditto (No. 59B) ebony black	76/6	8/6
3452m	" Kinglet " Front Lamp (No. 62B) ebony black	67/6	7/6
3452n	" " " " (No. 62) plated	76/6	8/6
3452p	" Kinglet Garda " Lamp, double purpose (No. 62D) black	76/6	8/6
3453a	" Pathfinder " Front Lamp, (No. 43B) enamelled	36/-	4/-
3453b	" " " " (No. 43) plated	45/-	5/-
3453c	" Planet " Front Lamp (No. 33B) ebony black	18/-	2/-
3453d	" " " " (No. 33) nickel plated	27/-	3/-
3453e	" Comet " Front Lamp, double purpose (No. 33DB) ebony black	31/6	3/6

MILLERS' (OIL).

List No.		per doz.	each
3471a	" Cyclight " Front Lamp, ebony black	27/-	3/-
3471c	Ditto Rear Lamp, ebony black	27/-	3/-
3471e	" Jupiter " (No. 2) Front Lamp, ebony black	65/-	7/3
3471m	" Lito " Front Lamp, ebony black	48/-	5/3
3471n	Ditto Front Lamp, plated	52/-	5/9
3471x	" Popular " Front Lamp, ebony black (No. 99J)	15/-	1/8
3473b	" Bell Rock " Front Lamp, plated	90/-	10/-
3473c	Ditto Front Lamp, ebony black	90/-	10/-
3473g	" Millo " Front Lamp, plated	42/-	4/5
3475a	" Lumo " Front Lamp, ebony black	37/-	3/11
3475b	Ditto Front Lamp, plated	41/-	4/4
3475c	Ditto Rear Lamp, ebony black	36/-	3/11

Orders for these goods value £5 and upwards sent to our customers in Great Britain will be forwarded Carriage Paid by Goods Train.

BROWN BROTHERS, LTD., With which is amalgamated
THOMSON & BROWN BROTHERS, Ltd.

WHOLESALE AND RETAIL PRICES OF CYCLE LAMPS 1923-24 SEASON.

LUCAS' (ACETYLENE)—continued.				LAMPS (Electric).				
List No.	Description	Trade	Retail each	List No.	Description	Trade	Retail	
3554s	"Calcia Toura" Lamp, with 3 1/4" domed glass (No. 153) nickel plated each	10/2	13/6	3566k	"Talmo" Dynamo Electric Lighting Set with Front Lamp, complete with Dry Battery Attachment per set	16/3	21/6	
3554t	Ditto, (No. 153B) ebony black ...	10/2	13/6		Lots of 1 doz. ..	16/-		
3554w	Ditto, with 3 1/4" double convex lens and rear light nipple fitted (No. 153LT) nickel plated ...	12/-	16/-	3566m	"Talmo" Dynamo Electric Lighting Set, combined Front and Rear Lamps, complete with Dry Battery Attachment ...	18/-	24/-	
3554x	Ditto (No. 153LTB) ebony black	12/-	16/-		Lots of 1 doz. ..	17/9		
3554y	Ditto with 3 1/4" domed glass and rear light nipple fitted (No. 153T) nickel plated ...	10/6	14/-	3574a	"Ever-Ready" (No. 2030) Front Cycle Lamp ...	8/4	12/6	
3554z	Ditto (No. 153TB) ditto, ebony black	10/6	14/-	3574d	"Ever-Ready" (No. 1921) Combined Front and Rear Cycle Lamp	14/-	21/-	
3555a	"Calcia Cadet" Lamp, with 2 1/2" domed glass (No. 133) nickel plated	4/1 1/2	5/6	3575a	"Ever-Ready" (No. 1500) Standard Model Cycle Lamp, with plain front glass ...	7/-	10/6	
3555b	Ditto (No. 133B) ebony black ...	4/1 1/2	5/6	3575b	Ditto (No. 1500a) ditto, with bull's eye front glass ...	8/-	12/-	
3555c	"Cadet Garda" Lamp, with 2 1/2" domed glass (double purpose) No. 133DB) ebony black ...	4/10 1/2	6/6		Nos. 3575a and b can be supplied with Red Glass for Rear Lamps at same price.			
3555m	"Rubia" Lamp (No. 142D) plated	7/3	12/-	3575f	"Ever-Ready" (No. 1550) Popular Model Cycle Lamp, with bevelled edge convex front glass ...	5/8	8/6	
3555n	Ditto (No. 142DB) ebony black	7/3	12/-	3575k	Ditto (No. 1523) ditto, with bull's eye lens ...	6/8	10/-	
3555p	"Calcia Club" Lamp, with 3 1/4" domed glass (No. 143) nickel plated	6/7	8/9		Nos. 3575f and k can be supplied with Red Glass for Rear Lamps at same prices.			
3555r	Ditto (No. 143B) ebony black ...	6/7	8/9	3576a	Electric Head Lamp, black enamelled finish with plated mounts, complete with dry battery enclosed in metal case to fit on top back stays of frame, flexible cord with plug-in attachment and metal filament bulb ...	7/-	10/6	
3555s	Ditto (No. 143T) with rear light nipple fitted, nickel plated ...	6/11	9/3		per doz. ..	82/6		
3555t	Ditto (No. 143TB) ebony black ...	6/11	9/3	3576k	Electric Head Lamp, black enamelled finish with plated front and spring bracket, with convex glass, complete with dry battery and metal filament bulb ...	2/3	3/3	
3555w	"Club Garda" Lamp, with 3 1/4" domed glass (double purpose) (No. 143DB), ebony black ...	7/4	9/9		per doz. ..	26/-		
3556a	"Calcia King" Projector Cycle Lamp Set, complete with separate generator and rubber tubing. Plated finish (No. 310) ...	per set	17/8	23/6	3576m	Electric Head Lamp, with spring bracket fitted with adjustable clip	2/6	3/9
3556b	Ditto, ditto, ebony black finish (No. 310B) ...	17/8	23/6		per doz. ..	29/-		
3556c	"Calcia King" Front Lamp Set only, complete with separate generator, plated finish ...	15/-	20/-	3578a	"Voltalite" (No. V2) Front Cycle Lamp ...	15/9	21/-	
3556d	Ditto, ditto, ebony black finish ...	15/-	20/-	3578d	"Voltalite" (No. V6) combined Front and Rear Lamps ...	18/9	25/-	
3556e	"Calcia King" Projector only, plated finish ...	each	7/11	10/6	3578k	"Voltalite" (No. V7) Model De Luxe Front Cycle Lamp ...	18/9	25/-
3556f	Ditto, ditto, ebony black finish ...	7/11	10/6	3578m	"Voltalite" (No. V8) Model De Luxe combined Front and Rear Lamps ...	22/6	30/-	
3556g	No. B116 Rear Lamp only, less generator and rubber tubing, plated finish ...	2/8	3/6	3580a	"Trippa" Electric Front Cycle Lamp, with special dry battery enclosed in leather bag to strap on frame ...	per set	9/6	
					per set	12/6		
				3580d	"Trippa" Electric combined Front and Rear Lamps, with special dry battery ...	13/3	17/9	
VARIOUS (Acetylene).								
No.	Description	each	each					
3558a	"Bemo" No. 1 Acetylene Lamp, plated	4/2	5/6					
3558e	" " No. 2 " "	5/8	7/6					
3558k	" " No. 3 " "	5/-	6/9					
3560a	"Motex" combined Front and Rear Cycle Lamp Set, complete with separate generator ...	per set	13/6	18/-				
3560c	"Motex" Front Lamp Set only, complete with separate generator	10/8	14/3					
3560e	"Motex" Front Lamp only, less generator and rubber tubing	each	4/1	5/6				
3560g	"Motex" Minor Rear Lamp only, less generator and rubber tubing	2/10	3/9					
3560l	"Motex" separate generator only, less rubber tubing	6/-	8/-					

Orders for these goods value £5 and upwards sent to our customers in Great Britain will be forwarded Carriage Paid by Goods Train.

BROWN BROTHERS, LTD., With which is amalgamated
THOMSON & BROWN BROTHERS Ltd.

LARGE and VARIED STOCKS

Kept on hand of all the following lines:—

Candle Lamps. Rear Reflectors.

Lamp Burners. Burner Cleaners.

Lamp Glasses and Lenses. Wicks.

Lamp Brackets. Springs.

and

ALL LAMP REPAIR PARTS.

ORDERS FOR THESE LAMPS

Value - **£5** and upwards

Sent to our Customers in Great Britain,

WILL BE FORWARDED BY GOODS TRAIN

CARRIAGE PAID.

The prices given in this leaflet are Nett Wholesale Prices, subject to the following Settlement Discounts only: 2½% approved Monthly Account, or 3¾% Cash with Order.

BROWN BROTHERS, Ltd. With which is amalgamated Thomson & Brown Brothers, Ltd.

Head Offices and Warehouses: **Great Eastern Street, London, E.C. 2.**

118, George Street EDINBURGH.

Branches: Aberdeen, Birmingham, Cardiff, Dundee, Dublin, Glasgow, Leeds, Manchester, Newcastle-on-Tyne, Southampton, and 14 & 15, Upper Marylebone Street, London, W.1.