

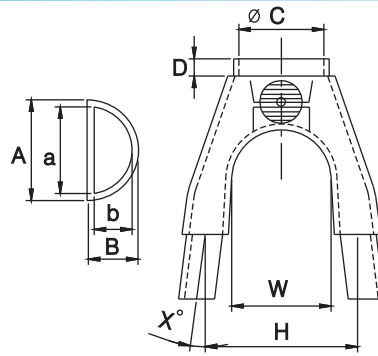
ALLOTEC

Investment Casting

精密脫蠟鑄造 2023

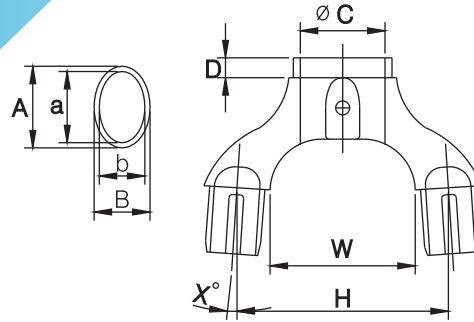
<http://www.allotec.com.tw>

A02 Fork Crown



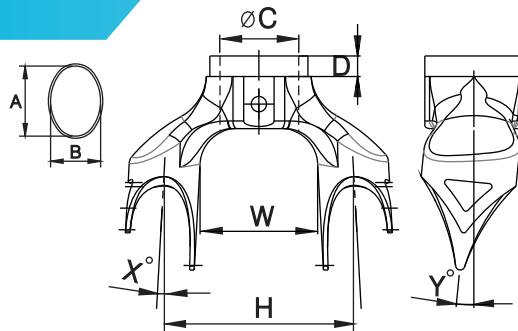
MODEL	A02-1	A02-2
A	28.4	28.4
a	25.8	25.8
B	14.8	14.8
b	12.6	12.6
ØC	25.4	28.6
D	5.5	5.5
H	48.2	48.2
W	33.5	33.5
X°	6.5°	6.5°
wt.	120g	110g

A03 Fork Crown



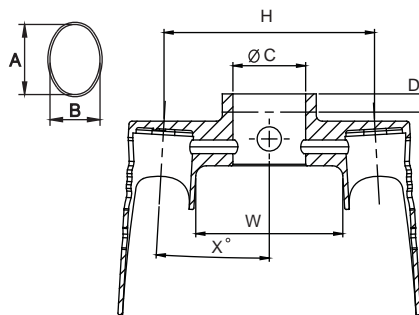
MODEL	A03-1	A03-2
A	26.7	26.7
a	23.5	23.5
B	19.1	19.1
b	16.1	16.1
ØC	25.4	28.6
D	5.7	5.7
H	64	64
W	41.8	41.8
X°	3.66°	3.66°
wt.	160g	150g

A04/A26 Fork Crown



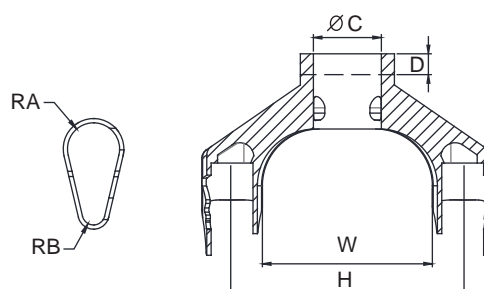
MODEL	A04-1	A04-2	A26-1	A26-2
A	28	28	28	28
B	19.3	19.3	20	20
ØC	25.4	28.6	25.4	28.6
D	5.5	5.5	5.5	5.5
H	59	59	59	59
W	39	39	39	39
X°	4°	4°	4°	4°
Y°			5.7°	5.7°
wt.	130g	120g	130g	120g

A06 Fork Crown



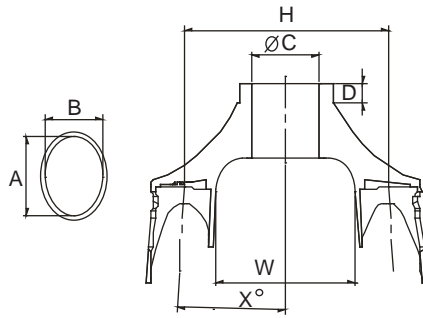
MODEL	A06-1	A06-2
A	28	28
B	20	20
ØC	25.4	28.6
D	5.5	5.5
H	70	70
W	50	50
X°	3.2°	3.2°
wt.	115g	150g

A07 Fork Crown



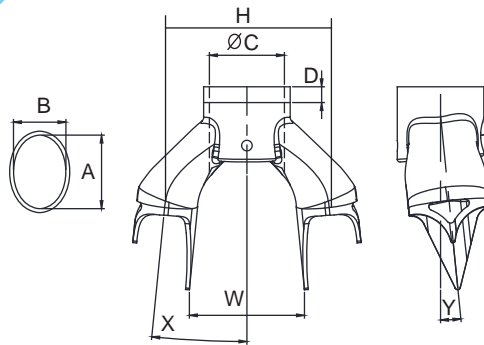
MODEL	A07-1	A07-2
RA	9.2	9.2
RB	4	4
ØC	25.4	28.6
D	5.5	5.5
H	81.4	81.4
W	60	60
Wt.	185g	150g

A10 Fork Crown



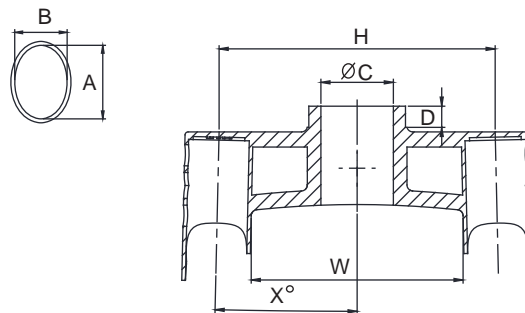
MODEL	A10-1	A10-2
A	28	28
B	20	20
ØC	25.4	28.6
D	5.5	5.5
H	72	72
W	51	51
X°	3°	3°
Wt.	210g	200g

A11 Fork Crown



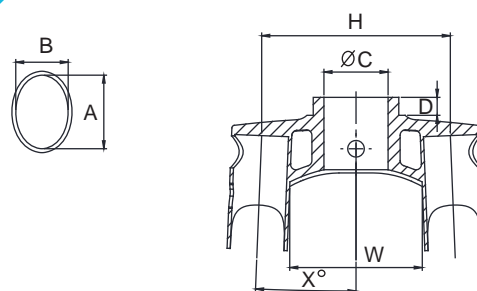
MODEL	A11-1	A11-2
A	28	28
B	20	20
ØC	25.4	28.6
D	5.5	5.5
H	60.7	60.7
W	43	43
X°	5.69°	5.69°
Y°	5.71°	5.71°
Wt.	105g	95g

A13 Fork Crown



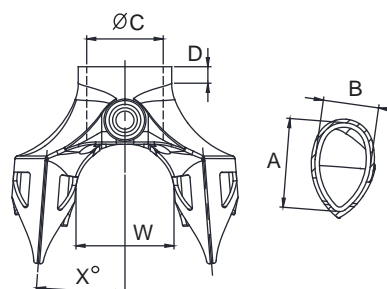
MODEL	A13-1	A13-2
A	30	30
B	20	20
ØC	25.4	28.6
D	5.5	5.5
H	91.5	91.5
W	70	70
X°	1.3°	1.3°
Wt.	203g	205g

A14 Fork Crown



MODEL	A14-1	A14-2
A	28	28
B	20	20
ØC	25.4	28.6
D	5.5	5.5
H	70	70
W	50	50
X°	2.3°	2.3°
Wt.	158g	131g

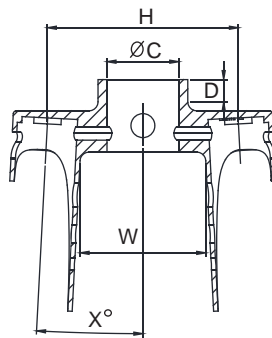
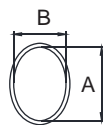
A15 Fork Crown



MODEL	A15-1	A15-2
A	29.5	29.5
B	18.5	18.5
ØC	25.4	28.6
D	5.5	5.5
W	33	33
X°	4.43°	4.43°
Wt.	150g	140g

A16/A17

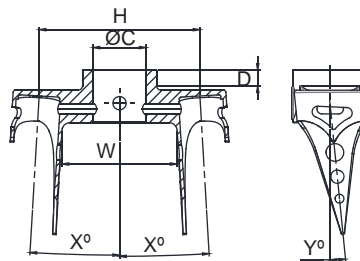
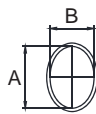
Fork Crown



MODEL	A16-1	A16-2	A17-1	A17-2
A	28	28	28	28
B	20	20	20	20
ØC	25.4	28.6	25.4	28.6
D	5.5	5.5	5.5	5.5
H	70	70	64	64
W	50	50	42	42
X°	3.2°	3.2°	3°	3°
Wt.	158g	135g	110g	108g

A27

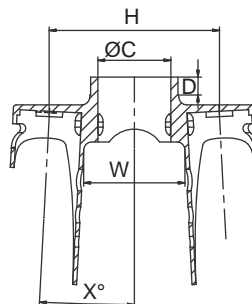
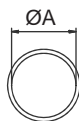
Fork Crown



MODEL	A27-1	A27-2
A	28	28
B	20	20
ØC	25.4	28.6
H	72.2	72.2
W	52	52
X°	3.35°	3.35°
Y°	5.7°	5.7°
Wt.	169g	146g

A18

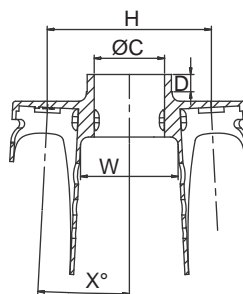
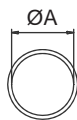
Fork Crown



MODEL	A18-1	A18-2
A	24	24
ØC	25.4	28.6
D	5.5	5.5
H	63.5	63.5
W	43	43
X°	3°	3°
Wt.	100g	90g

A28

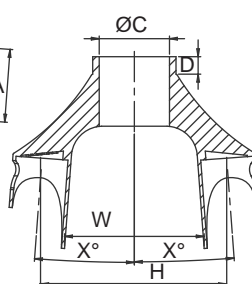
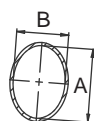
Fork Crown



MODEL	A28-1	A28-2
A	24	24
ØC	25.4	28.6
D	5.5	5.5
H	63.5	63.5
W	43	43
X°	3°	3°
Wt.	100g	90g

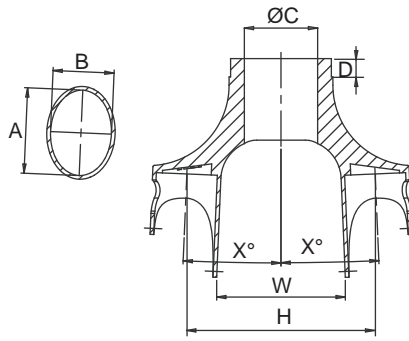
A20

Fork Crown



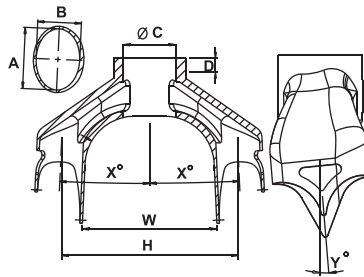
MODEL	A20-1	A20-2
A	28	28
B	20	20
ØC	25.4	28.6
D	5.5	5.5
H	71	71
W	53	53
X°	4.26°	4.26°
Wt.	186g	192g

A21 Fork Crown



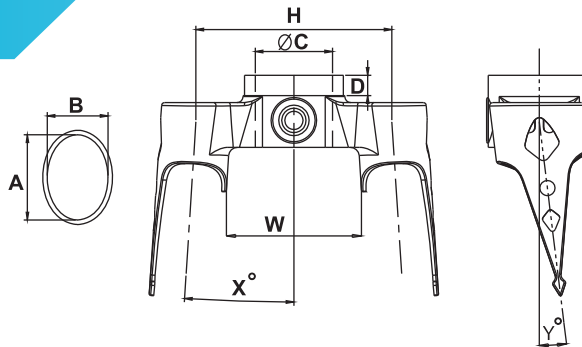
MODEL	A21-1	A21-2
A	28	28
B	20	20
ØC	25.4	28.6
D	5.5	5.5
H	61.68	61.68
W	40	40
X°	2.43°	2.43°
Wt.	188g	162g

A22/A24 Fork Crown



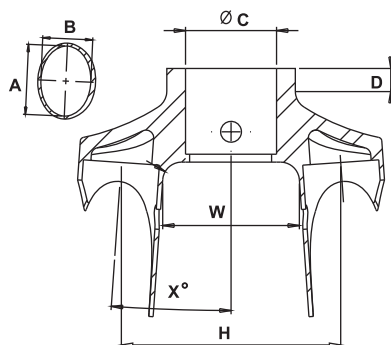
MODEL	A22-1	A22-2	A24-1	A24-2
A	28	28	28	28
B	20	20	20	20
ØC	25.4	28.6	25.4	28.6
D	5.5	5.5	5.5	5.5
H	83	83	83	83
W	61	61	61	61
X°	2.56°	2.56°	2.56°	2.56°
Y°			7°	7°
Wt.	185g	162g	185g	162g

A120 Fork Crown



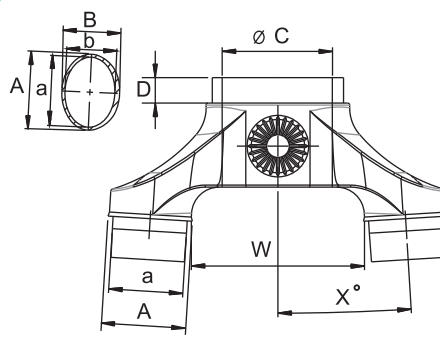
MODEL	A120-1	A120-2
A	28	28
B	20	20
ØC	25.4	28.6
D	5.5	5.5
H	64.5	64.5
W	43	43
X°	3.7°	3.7°
Y°	7°	7°
Wt.	125g	121g

A170 Fork Crown



MODEL	A170-1	A170-2
A	28	28
B	20	20
ØC	25.4	28.6
D	5.5	5.5
H	57.87	57.87
W	36	36
X°	4°	4°
Wt.	180g	156g

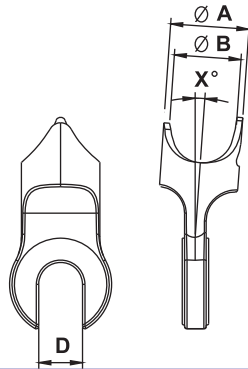
A210 Fork Crown



MODEL	A210-1	A210-2
A	28	28
a	24.9	24.9
B	20	20
b	16.9	16.9
ØC	25.4	28.6
D	5.5	5.5
W	42	42
X°	3.5°	3.5°
Wt.	122g	132g

D01

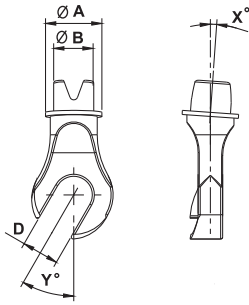
Fork End



MODEL	D01
Ø A	16.3
Ø B	13.9
D	9
X°	4°
Wt.	36g

D02

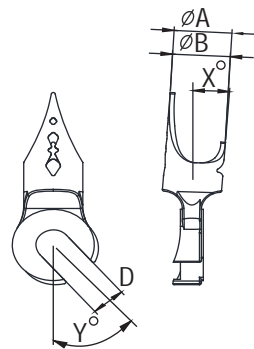
Fork End



MODEL	D02
Ø A	13.8
Ø B	9.8
D	9
X°	4°
Y°	30°
Wt.	28g

D03

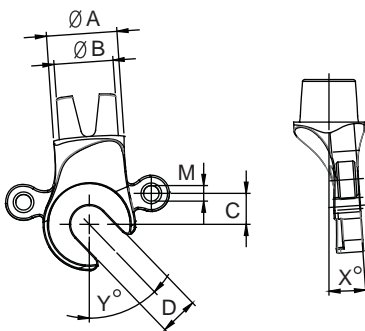
Fork End



MODEL	D03
Ø A	15.5
Ø B	13.1
D	9
X°	4°
Y°	40°
Wt.	45g

D04

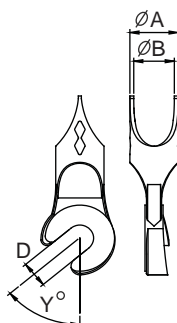
Fork End



MODEL	D04	D04-1	D04-2
Ø A	19	19	19
Ø B	16	16	16
C	8.4	8.4	8.4
D	10	10	10
M		M5X0.8	2-M5X0.8
X°	4	4	4
Y°	44	44	44
Wt.	75g	75g	75g

D05

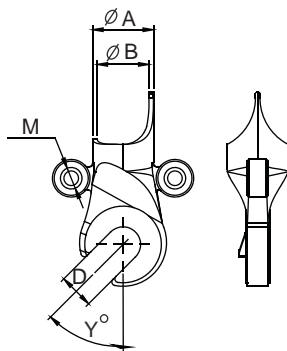
Fork End



MODEL	D05
Ø A	16
Ø B	13.5
D	9
Y°	50°
Wt.	66g

D06

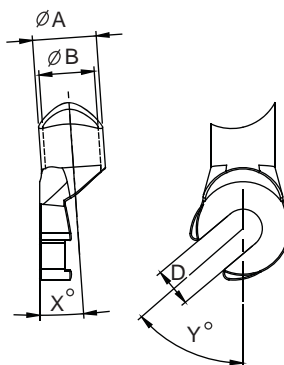
Fork End



MODEL	D06	D06-1	D06-2
$\varnothing A$	17.5	17.5	17.5
B	14.9	14.9	14.9
$\varnothing D$	10	10	10
Y°	45	45	45
M		M5X0.8	2-M5X0.8
Wt.	64g	76g	88g

D07

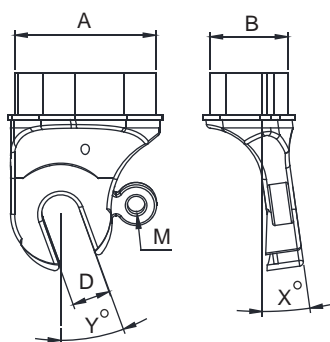
Fork End



MODEL	D07
$\varnothing A$	15
$\varnothing B$	13
D	9
X°	4°
Y°	50°
Wt.	35g

D09

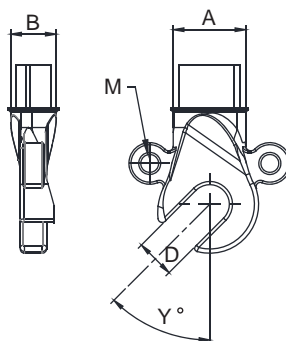
Fork End



MODEL	D09-1
A	33.7
B	18.6
D	9
M	M5X0.8
X°	8°
Y°	28°
Wt.	126g

D10

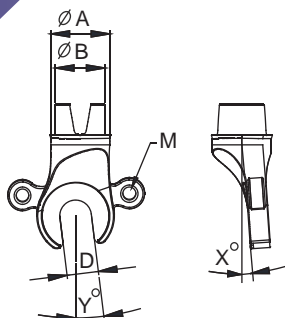
Fork End



MODEL	D10	D10-1	D10-2
A	17.3	17.3	17.3
B	11	11	11
D	9	9	9
M		M5X0.8	2-M5X0.8
Y°	45°	45°	45°
Wt.	60g	70g	80g

D11/D20

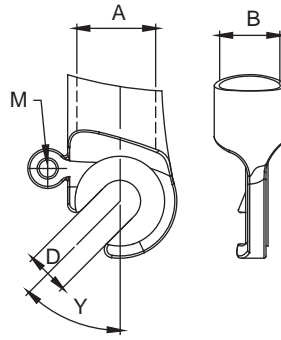
Fork End



MODEL	D11-1	D20	D20-1	D20-2
$\varnothing A$	19.6	17	17	17
$\varnothing B$	16	13.9	13.9	13.9
D	10	9	9	9
M	M5X0.8		M5X0.8	2-M5X0.8
X°	4°	4°	4°	4°
Y°	3°	7°	7°	7°
Wt.	84g	84g	89g	94g

D12

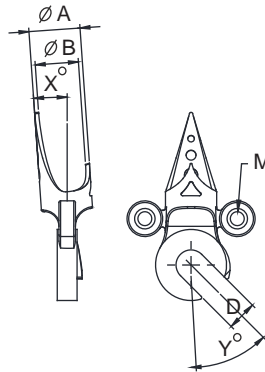
Fork End



MODEL	D12-1
A	20.8
B	15
D	10
M	M5X0.8
Y°	45°
Wt.	42g

D13

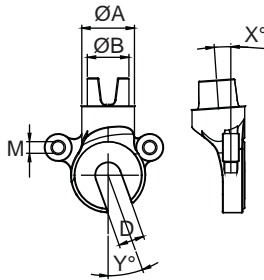
Fork End



MODEL	D13	D13-1	D13-2
ØA	15.5	15.5	15.5
ØB	13	13	13
D	9	9	9
M		M5X0.8	2-M5X0.8
X°	4°	4°	4°
Y°	45°	45°	45°
Wt.	45g	51g	57g

D14/D17

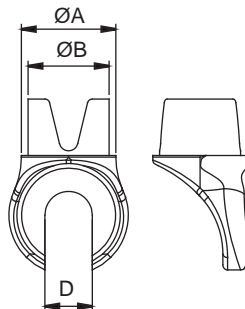
Fork End



MODEL	D14-2	D17	D17-1	D17-2
ØA	19.6	19.6	19.6	19.6
ØB	15.5	15	15	15
D	9	10	10	10
M	2-M5X0.8		M5X0.8	2-M5X0.8
X°		4°	4°	4°
Y°	20°	20°	20°	20°
Wt.	45g	45g	51g	57g

D15

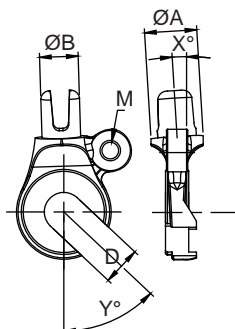
Fork End



MODEL	D15
A	20
B	17
D	10
Wt.	56g

D16

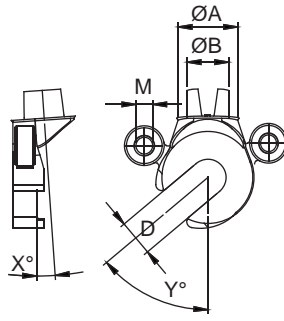
Fork End



MODEL	D16-1
ØA	13.5
ØB	10
D	10
M	M5X0.8
X°	3.5°
Y°	45°
Wt.	45g

D18

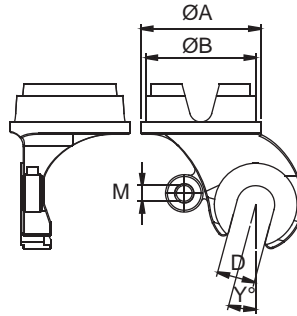
Fork End



MODEL	D18	D18-1	D18-2
Ø A	15.4	15.4	15.4
Ø B	10.5	10.5	10.5
D	9	9	9
M		M5X0.8	2-M5X0.8
X°	4°	4°	4°
Y°	50°	50°	50°
Wt.	66g	72g	78g

D19

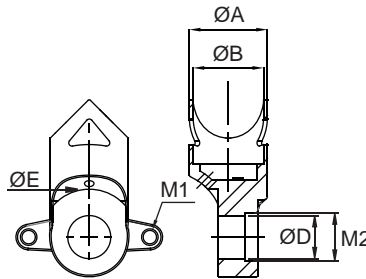
Fork End



MODEL	D19	D19-1
Ø A	31.8	31.8
Ø B	29.4	29.4
D	10	10
M		M5X0.8
Y°	15°	15°
Wt.	108g	114g

D21

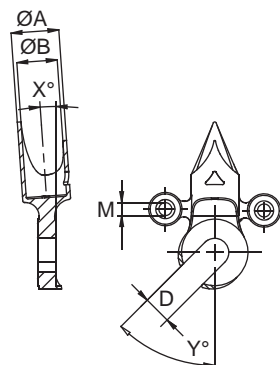
Fork End



MODEL	D21	D21-2
Ø A	24.5	24.5
Ø B	22	22
D	15.1	15.1
M1		2-M5X0.8
M2	M15X1.5	M15X1.5
Ø E	23.5	23.5
Wt.	132g	141g

D23

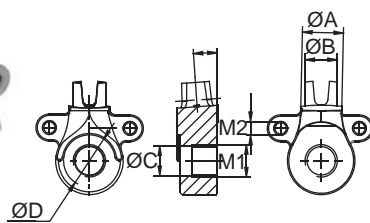
Fork End



MODEL	D23	D23-1	D23-2
Ø A	15.5	15.5	15.5
Ø B	13	13	13
D	9	9	9
M		M5X0.8	2-M5X0.8
X°	4°	4°	4°
Y°	45°	45°	45°
Wt.	45g	51g	58g

D26/27

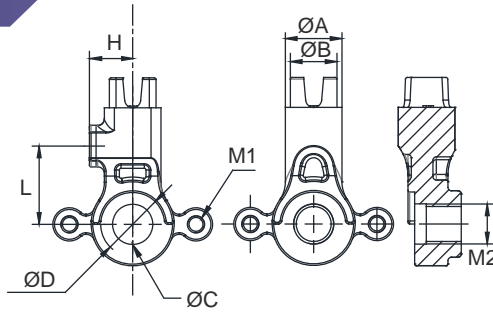
Fork End



MODEL	D26	D26-1	D26-2	D27	D27-1	D27-2
Ø A	17	17	17	15	15	15
Ø B	14	14	14	12	12	12
Ø C	12.1/15.1	12.1/15.1	12.1/15.1	12.1/15.1	12.1/15.1	12.1/15.1
Ø D	19.2/21.2	19.2/21.2	19.2/21.2	19.2/21.2	19.2/21.2	19.2/21.2
M1	M12X1.5	M12X1.5	M12X1.5	M12X1.5	M12X1.5	M12X1.5
M2	M15X1.5	M15X1.5	M15X1.5	M15X1.5	M15X1.5	M15X1.5
X°				4°	4°	4°
Wt.	125g	131g	138g	118g	124g	131g

D30

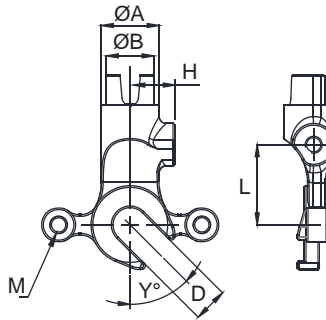
Fork End



MODEL	D30	D30-1	D30-2
ØA	17	17	17
ØB	14	14	14
ØC	12.1/15.1	12.1/15.1	12.1/15.1
ØD	19.2/21.2	19.2/21.2	19.2/21.2
H	11	11	11
L	23.5	23.5	23.5
M1		M5X0.8	2-M5X0.8
M2	M12X1.5 M15X1.5	M12X1.5 M15X1.5	M12X1.5 M15X1.5
Wt.	151g	159g	166g

D31

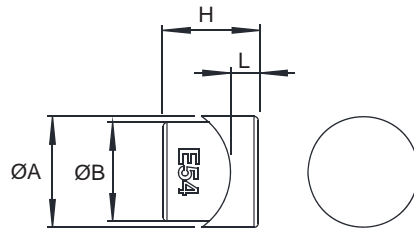
Fork End



MODEL	D31	D31-1	D31-2
ØA	17	17	17
ØB	14	14	14
D	10	10	10
H	11	11	11
L	23.5	23.5	23.5
M		M5X0.8	2-M5X0.8
Y°	45°	45°	45°
Wt.	90g	98g	106g

E54

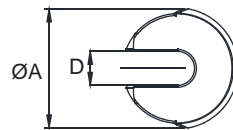
Dropout Nut



MODEL	E54
ØA	14
ØB	12.5
H	1.5
L	12
Wt.	11g

D32

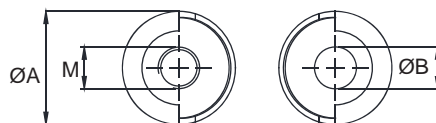
Fork End



MODEL	D32
ØA	32.6
D	9.2
Wt.	75g

D33

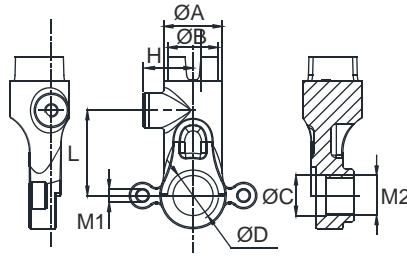
Fork End



MODEL	D33
ØA	32.6
ØB	12.1/15.1
M	M12X1.5 M15X1.5
Wt.	125g

D34

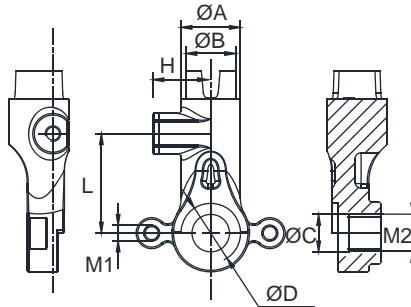
Fork End



MODEL	D34	D34-1	D34-2
ØA	22.1	22.1	22.1
ØB	19	19	19
ØC	12.1/15.1	12.1/15.1	12.1/15.1
ØD	19.2/21.2	19.2/21.2	19.2/21.2
H	16.7	16.7	16.7
L	32	32	32
M1		M5X0.8	2-M5X0.8
M2	M12X1.5 M15X1.5	M12X1.5 M15X1.5	M12X1.5 M15X1.5
Wt.	216g	225g	235g

D35

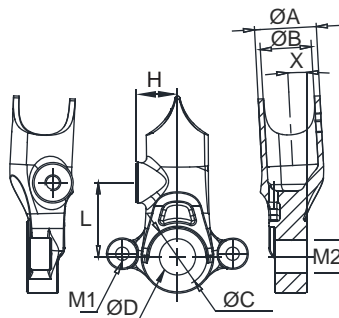
Fork End



MODEL	D35	D35-1	D35-2
ØA	19	19	19
ØB	16	16	16
ØC	12.1/15.1	12.1/15.1	12.1/15.1
ØD	19.2/21.2	19.2/21.2	19.2/21.2
H	16.7	16.7	16.7
L	32	32	32
M1		M5X0.8	2-M5X0.8
M2	M12X1.5 M15X1.5	M12X1.5 M15X1.5	M12X1.5 M15X1.5
Wt.	184g	193g	203g

D36

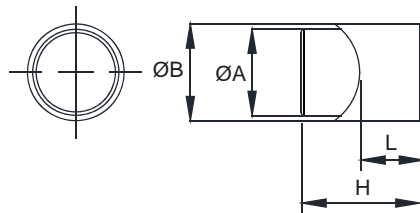
Fork End



MODEL	D36	D36-1	D36-2
ØA	19.6	19.6	19.6
ØB	16.2	16.2	16.2
ØC	12.1/15.1	12.1/15.1	12.1/15.1
ØD	19.2/21.2	19.2/21.2	19.2/21.2
H	11	11	11
L	23.5	23.5	23.5
M1		M5X0.8	2-M5X0.8
M2	M12X1.5 M15X1.5	M12X1.5 M15X1.5	M12X1.5 M15X1.5
X°	3°	3°	3°
Wt.	134g	143g	153g

E59

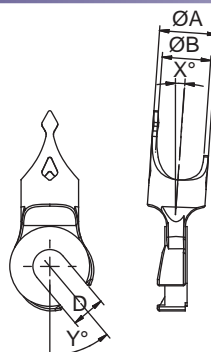
Dropout Nut



MODEL	E59
ØA	14
ØB	12.5
H	17.7
L	7.2
Wt.	17g

D120

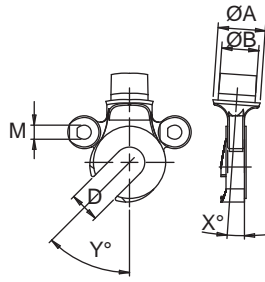
Fork End



MODEL	D120
ØA	15.5
ØB	13
D	9
X°	4°
Y°	40°
Wt.	42g

D210

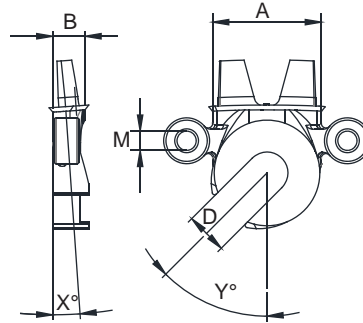
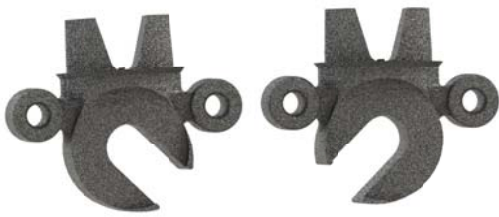
Fork End



MODEL	D210	D210-1	D210-2
ØA	14	14	14
ØB	11.1	11.1	11.1
D	9	9	9
M		M5X0.8	2-M5X0.8
X°	4°	4°	4°
Y°	45°	45°	45°
Wt.	41g	46g	52g

D310

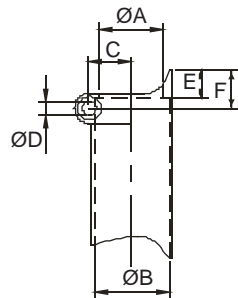
Fork End



MODEL	D310	D310-1	D310-2
A	23.67	23.67	23.67
B	7	7	7
D	9	9	9
M		M5X0.8	2-M5X0.8
X°	4°	4°	4°
Y°	45°	45°	45°
M	45g	51g	45g

B01

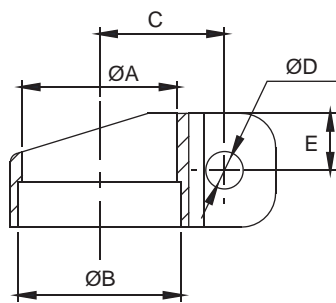
Seat Clamp



MODEL	B01
Ø A	29.4
Ø B	31.8
C	22
Ø D	6.3
E	16
F	11
Wt.	60g

B02

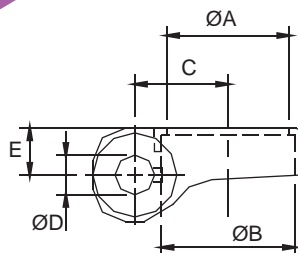
Seat Clamp



MODEL	B02-1	B02-2
Ø A	26.8	27.2
Ø B	29.6	28.6
C	22	22
Ø D	8.3	8.3
E	10	10
Wt.	50g	50g

B03/B04

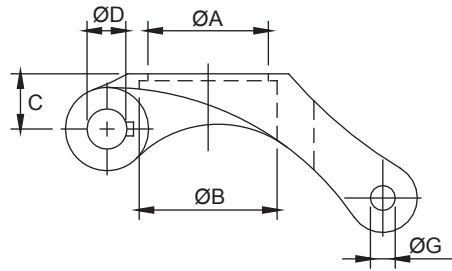
Seat Clamp



MODEL	B03-1	B03-2	B04-1	B04-2
Ø A	26.2	26.8	29.8	30.4
Ø B	28.6	29.6	31.8	32.8
C	20	20	21	21
Ø D	8.3	8.3	8.3	8.3
E	10	10	10	10
Wt.	40g	40g	48g	48g

B05/B25

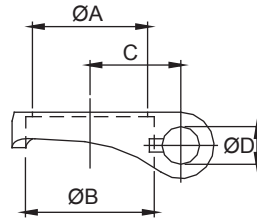
Seat Clamp



MODEL	B05	B25
Ø A	26.2	29.8
Ø B	28.6	31.8
C	12	12
Ø D	8.3	8.3
Ø G	5.2	5.2
Wt.	50g	50g

B06/B08/B26

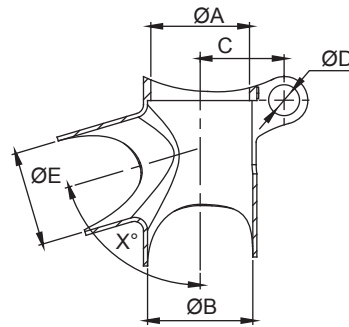
Seat Clamp



MODEL	B06	B08	B26
Ø A	26.8	26.8	21
Ø B	28.6	29.8	23
C	20	20	18
Ø D	8.3	8.3	8.3
Wt.	22g	22g	25g

B07

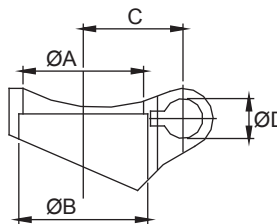
Seat Lug



MODEL	B07
Ø A	26.8
Ø B	28.6
C	23
Ø D	8.3
Ø E	25.4
X°	69°/73.5°/76°/79°
Wt.	48g

B09/B11

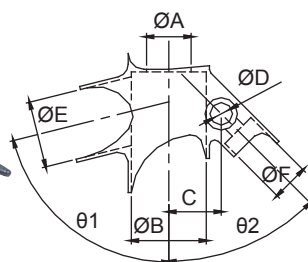
Seat Clamp



MODEL	B09-1	B11
Ø A	26.8	29.8
Ø B	28.6	31.8
C	21.5	21.5
Ø D	8.3	8.3
Wt.	28g	28g

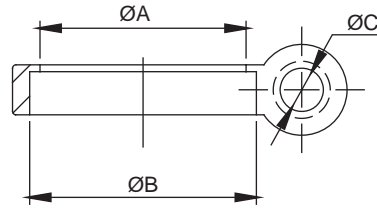
B10/B16/B19/B17/B18/B23/B24

Seat Lug



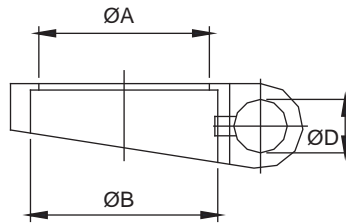
MODEL	B10	B16	B19	B17	B18	B23	B24
Ø A	27.2	27.2	27.2	27.2	27.2	27.2	27.2
Ø B	28.6	28.6	28.6	28.6	28.6	28.6	28.6
C	20	20	20	20	20	20	20
Ø D	8.3	8.3	8.3	8.3	8.3	8.3	8.3
Ø E	25.4	25.4	25.4	28.6	28.6	28.6	28.6
Ø F	14	14	14	14	14	14	14
θ1	76°	76°	80°	76°	73°	75.5°	74.5°
θ2	51°	45°	54°	51°	40°	46°	43°
Wt.	65g	65g	65g	65g	65g	65g	65g

B12 Seat Clamp



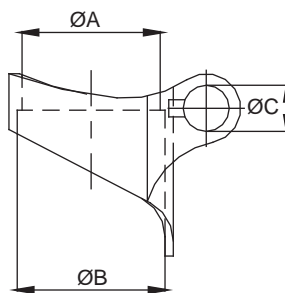
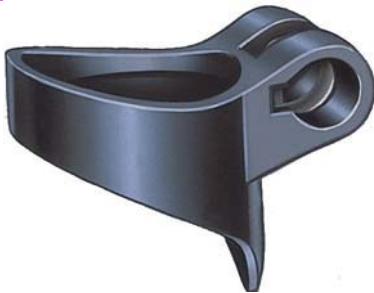
MODEL	B12
Ø A	26.5
Ø B	29.8
Ø C	6.3
Wt.	23g

B13/B14 Seat Clamp



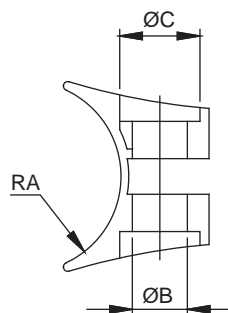
MODEL	B13-1	B13-2	B14-1	B14-2	B14-3
Ø A	26.8	27.2	29.4	29.8	31.8
Ø B	28.6	29.8	31.8	32.4	34.9
Ø D	8.2	8.2	8.2	8.2	8.2
Wt.	20g	20g	20g	20g	20g

B15/B20/B22 Seat Clamp



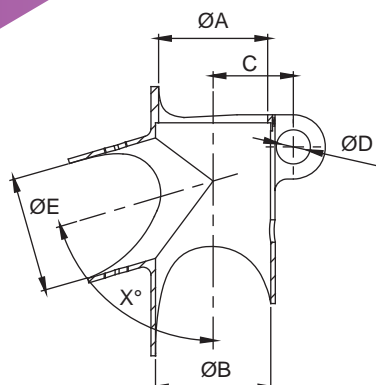
MODEL	B15-1	B20	B22-1
Ø A	27.2	29.4	27.2
Ø B	28.6	31.8	29.8
Ø C	8.3	8.3	8.3
Wt.	32g	35g	33g

B21 Seat Clamp



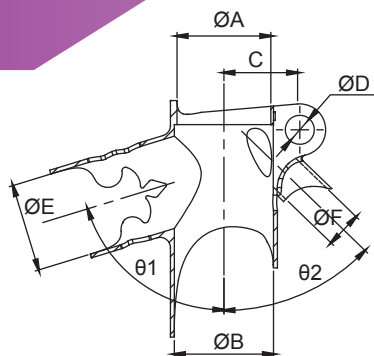
MODEL	B21
Ø A	14.7
Ø B	8.3
Ø C	12.5
Wt.	24g

B27 Seat Lug



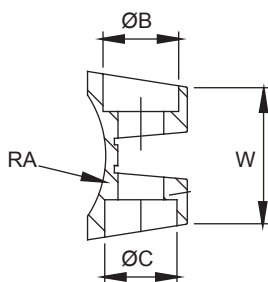
MODEL	B27
Ø A	27.2
Ø B	28.6
C	20
Ø D	8.3
Ø E	28.6
X°	69°/73.5°/75.5°/77.5°/82.5°
Wt.	57g

B28 Seat Lug



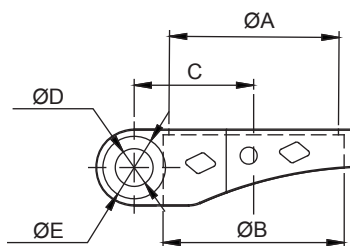
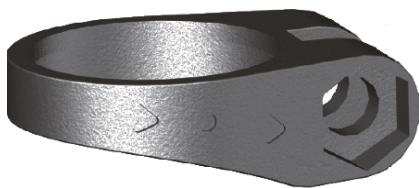
MODEL	B28-1	B28-2	B28-3	B28-4	B28-5	B28-6
Ø A	27.2	27.2	27.2	27.2	27.2	27.2
Ø B	28.6	28.6	28.6	28.6	28.6	28.6
C	22	22	22	22	22	22
Ø D	8.3	8.3	8.3	8.3	8.3	8.3
Ø E	25.4	25.4	25.4	25.4	25.4	25.4
Ø F	10.5	10.5	10.5	10.5	10.5	10.5
θ1	73°	76°	70.5°	76°	76°	73°
θ2	46°	49°	55°	45°	51°	42°
Wt.	85g	85g	85g	85g	85g	85g

B29 Seat Binder



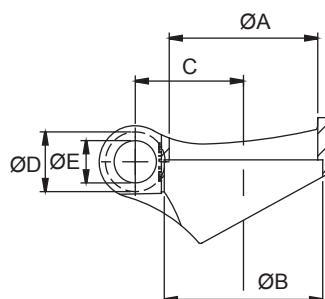
MODEL	B29-1	B29-2
RA	14.3	15.9
Ø B	11	11
Ø C	6.5	6.5
W	19.5	19.5
Wt.	10g	10g

B30 Seat Clamp



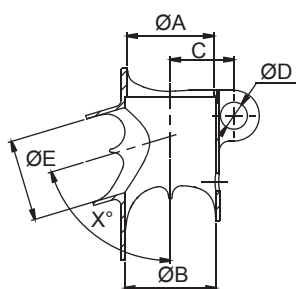
MODEL	B30-1	B30-2	B30-3
ØA	26.8	29.8	27.2
ØB	28.6	31.8	29.8
C	19.5	21	21
ØD	6.5	6.5	6.5
ØE	11	11	11
Wt.	22g	22g	22g

B31 Seat Clamp



MODEL	B31-1	B31-2	B31-3	B31-4
ØA	26.8	29.8	31.8	27.2
ØB	28.6	31.8	34.9	29.8
C	21.5	21.8	23	23
ØD	12	12	12	12
ØE	8.3	8.3	8.3	8.3
Wt.	32g	34g	36g	36g

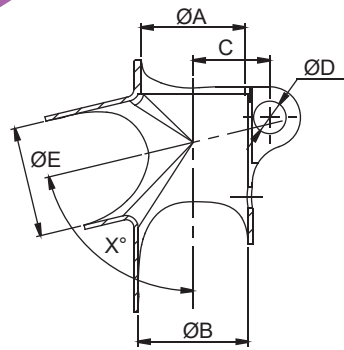
B110 Seat Lug



MODEL	B110
Ø A	27.2
Ø B	28.6
C	19.5
Ø D	8.3
Ø E	25.4
X°	70.5°/73.5°/76.5°
Wt.	57g

B120/B126

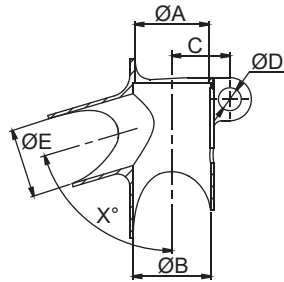
Seat Lug



MODEL	B120	B126
Ø A	27.2	27.2
Ø B	28.6	28.6
C	19.5	19.5
Ø D	8.3	8.3
Ø E	28.6	28.6
X°	70.5°/73.5°/76.5°	70.5°/73.5°/76.5°
Wt.	57g	57g

B130/B131/B140/B150/B151/B160

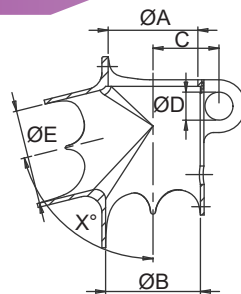
Seat Lug



MODEL	B130	B131	B140	B150	B151	B160
Ø A	27.2	27.2	27.2	29.4	27.2	29.4
Ø B	28.6	29.8	28.6	31.8	28.6	31.8
C	19.5	21.5	20	21.5	21.5	23.5
Ø D	8.3	8.3	8.3	8.3	8.3	8.3
Ø E	25.4	25.4	28.6	28.6	31.8	31.8
X°	72°/73.5°/75°/77°/79°/81°	74.5°	72°/73.5°/75°/77°/79°/81°/80.5°	73.5°/89°	78.8°	73°/81°/79.5°
Wt.	60g	76g	65g	70g	76g	76g

B170/B180/B190

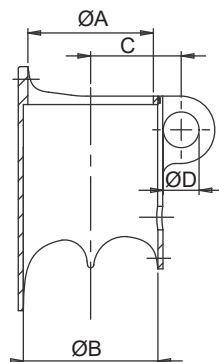
Seat Lug



MODEL	B170	B180	B190
Ø A	27.2	27.2	29.4
Ø B	28.6	28.6	31.8
C	19.5	20	21.5
Ø D	8.3	8.3	8.3
Ø E	25.4	28.6	28.6
X°	73.5°/75°/79°	74°/76°/78°	73.5°
Wt.	57g	60g	65g

B181/B191

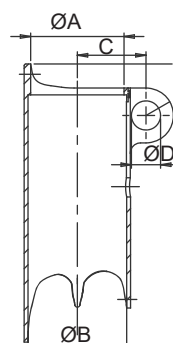
Seat Clamp



MODEL	B181	B191
Ø A	27.2	29.4
Ø B	28.6	31.8
C	21.5	21.5
Ø D	8.3	8.3
Wt.	55g	61g

B183/B193

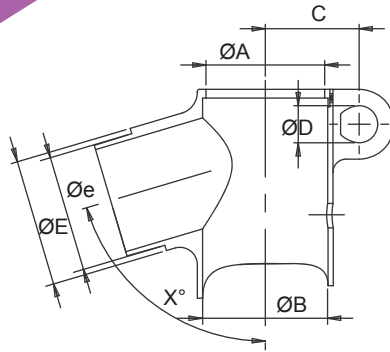
Seat Clamp



MODEL	B183	B193
Ø A	27.2	29.4
Ø B	28.6	31.8
C	20	20
Ø D	8.3	8.3
Wt.	69g	78g

B210/B220

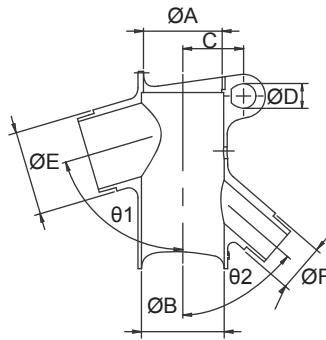
Seat Lug



MODEL	B210	B220
Ø A	27.2	27.2
Ø B	28.6	28.6
C	21.5	21.5
Ø D	8.3	8.3
Ø E	25.4	28.6
Ø e	23.6	26.4
X°	72.5°/75°/78°	73.5°
Wt.	82g	97g

B212/B222

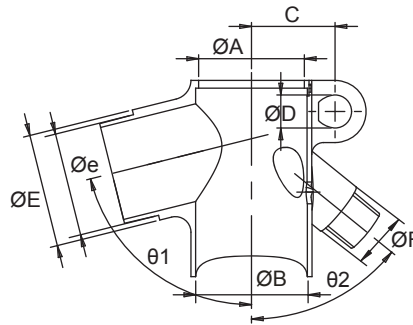
Seat Lug



MODEL	B212-1	B222-1
Ø A	27.2	27.2
Ø B	28.6	28.6
C	21	21
Ø D	8.3	8.3
Ø E	25.4	28.6
Ø F	16	16
θ1	73°30'	73°30'
θ2	49°10'	49°10'
Wt.	128g	133g

B221

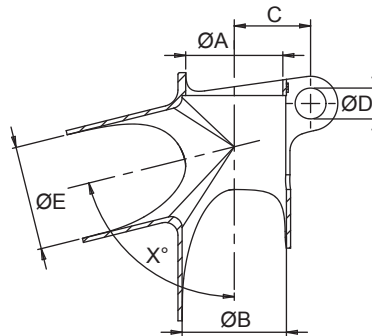
Seat Lug



MODEL	B221
Ø A	27.2
Ø B	28.6
C	21.5
Ø D	8.3
Ø E	28.6
Ø e	26.4
Ø F	14
θ1	76°
θ2	51°
Wt.	113g

B230/B240

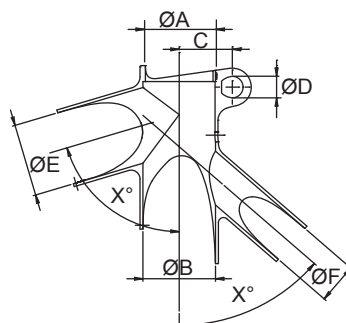
Seat Lug



MODEL	B230	B240
Ø A	26.8	27.2
Ø B	28.6	28.6
C	21	21.5
Ø D	8.3	8.3
Ø E	25.4	28.6
X°	74°/76°/78°	74°/76°/78°
Wt.	72g	72g

B232/B242

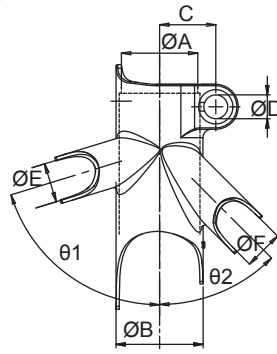
Seat Lug



MODEL	B232-1	B242-1
Ø A	27.2	27.2
Ø B	28.6	28.6
C	21	21
Ø D	8.3	8.3
Ø E	25.4	28.6
Ø F	15.9	15.9
θ1	73°30'	73°30'
θ2	49°10'	49°10'
Wt.	92g	100g

B250

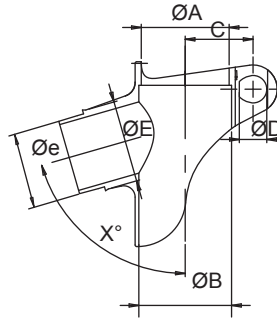
Seat Lug



MODEL	B250-1	B250-2	B250-3	B250-4
Ø A	27.2	27.2	27.2	27.2
Ø B	28.6	28.6	28.6	28.6
C	20	20	20	20
Ø D	8.3	8.3	8.3	8.3
Ø E	14	14	14	14
Ø F	14	14	14	14
θ1	73.5°	74.5°	77.6°	80°
θ2	45°	49.6°	54.9°	54°
Wt.	95g	95g	95g	95g

B270/B280

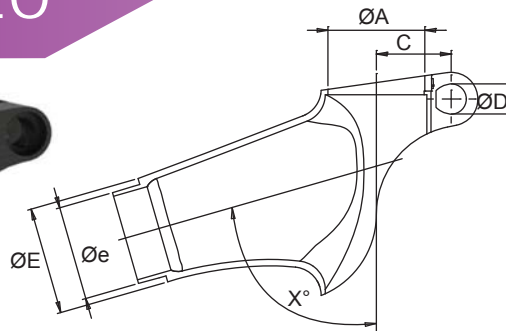
Seat Lug



MODEL	B270	B280
Ø A	27.2	27.2
Ø B	28.6	28.6
C	21	21
Ø D	8.3	8.3
Ø E	25.4	28.6
Ø e	23.6	26.8
X°	74°	74°
Wt.	102g	113g

B310/B320

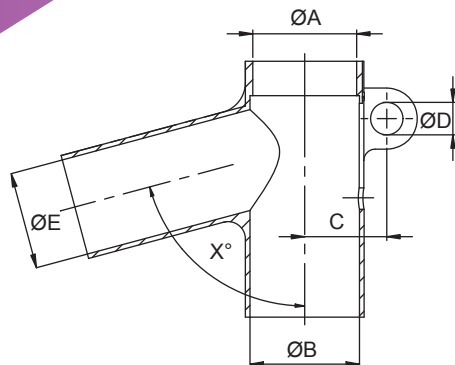
Seat Lug



MODEL	B310	B320
ØA	27.2	27.2
ØB	28.6	28.6
C	21	21
ØD	8.3	8.3
ØE	25.4	28.6
Øe	23.6	26.8
X°	74°/76°	74°
Wt.	82g	97g

B330/B340

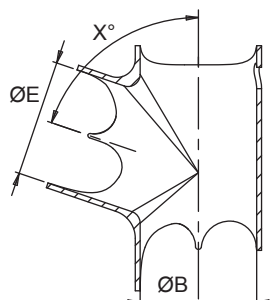
Seat Lug



MODEL	B330	B340
ØA	27.2	27.2
ØB	28.6	28.6
C	21.5	21.5
ØD	8.3	8.3
ØE	25.4	28.6
X°	75°	73.5°
Wt.	128g	133g

M171/M173/M181

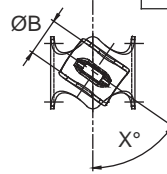
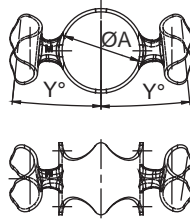
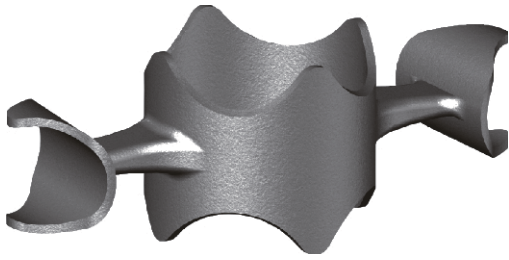
Seat Lug



MODEL	M171	M173	M181
ØB	28.6	31.8	28.6
ØE	25.4	25.4	28.6
X°	61°/73.8°/87°/95.8°	95.8°	71.2°/80.2°/83.9°/108°
Wt.	42g	62g	50g

M175/M176

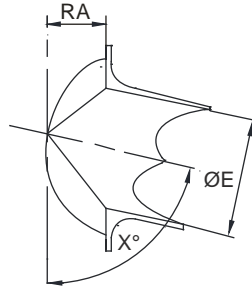
Clamp



MODEL	M175	M176
ØA	28.6	28.6
ØB	14	14
X°		55.44°
Y°	7°	5.91°
Wt.	30g	31g

M182

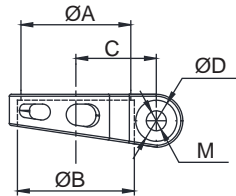
Clamp



MODEL	M182
RA	14.3
ØE	28.6
X°	77.3°
Wt.	42g

TB01

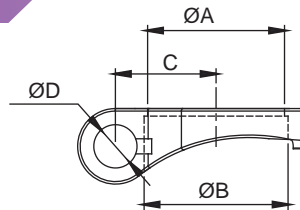
Seat Clamp



MODEL	TB01-1	TB01-2	TB01-3
ØA	28	30	33
ØB	29.8	31.8	34.9
C	20.5	22	23.7
ØD	10.5	10.5	10.5
M	M6X1.0	M6X1.0	M6X1.0
Wt.	30g	32g	33g

TB02

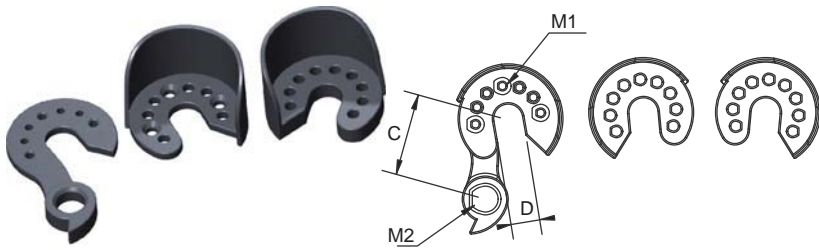
Seat Clamp



MODEL	TB02-1	TB02-2	TB02-3	TB02-4
ØA	27.2	28	30	27.2
ØB	28.6	29.8	31.8	34.9
C	20	20.5	22	23.5
ØD	8.3	8.3	8.3	8.3
Wt.	24g	23g	25g	27g

TC01

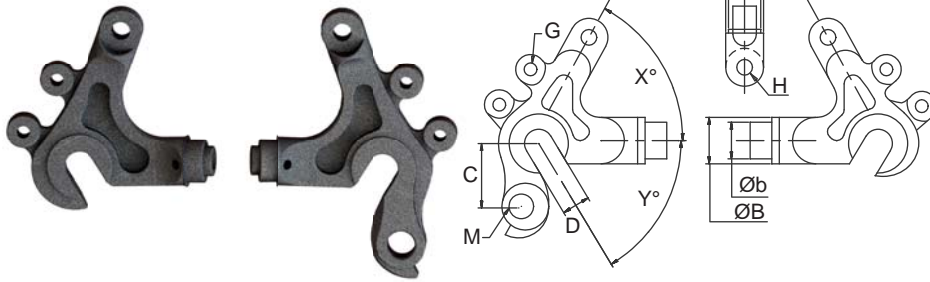
Dropout



MODEL	TC01R	TC01L	TC01H
D	10	10	10
C			26
M1			M3X0.5
M2			M10X1.0
Wt.	32g	47g	24g

C01

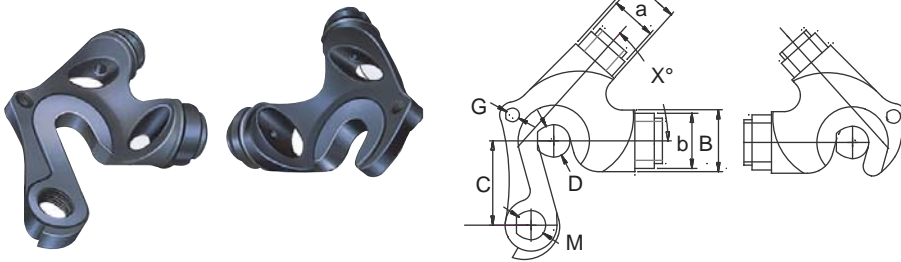
Dropout



MODEL	C01	C01-1	C01-2
ØA	15	15	15
Øa	12	12	12
ØB	16	16	16
Øb	14	14	14
C	26	26	26
D	10	10	10
G		M5X0.8	2-M5X0.8
H	5	5	5
M	M10X1.0	M10X1.0	M10X1.0
X°	48°/54°/60°/70°	48°/54°/60°/70°	48°/54°/60°/70°
Y°	60°	60°	60°
Wt.	200g	200g	200g

C02

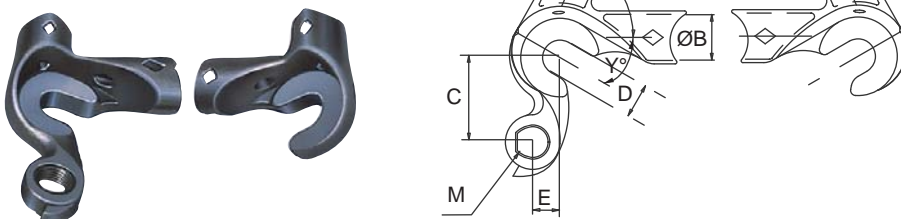
Dropout



MODEL	C02-1
ØA	16
Øa	14
ØB	19
Øb	17
C	26
D	10
G	M5X0.8
M	M10X1.0
X°	48°/54°/60°
Wt.	130g

C03

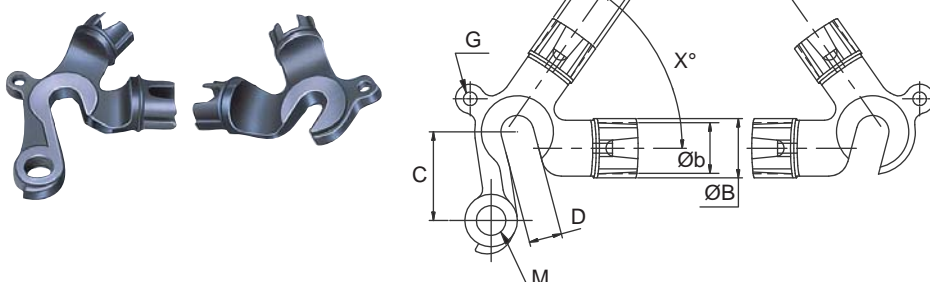
Dropout



MODEL	C03
ØA	12.5
ØB	13.5
C	26
D	10
E	8
M	M10X1.0
X°	66°/70°/74°
Y°	30°
Wt.	80g

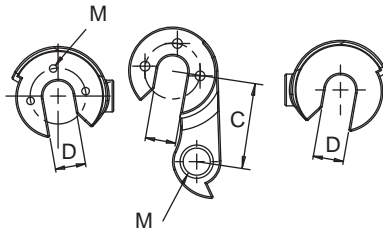
C04

Dropout



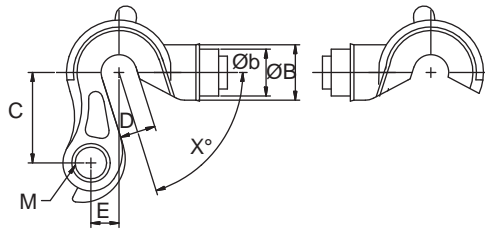
MODEL	C04-1
ØA	16
Øa	13.5
ØB	18
Øb	15.5
C	27
D	10
G	M5X0.8
M	M10X1.0
X°	45°/55°/62°
Wt.	113g

C05 Dropout



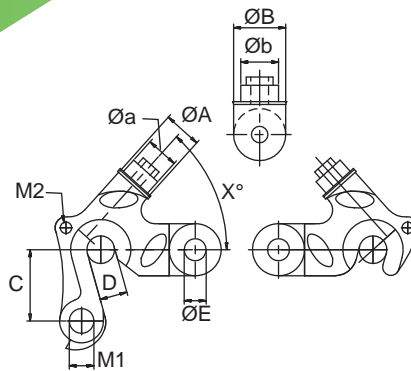
MODEL	C05H	C05R	C05L
C	30	10	10
D	10	10	10
M	M10X1.0	M3X0.5	
Wt.	33g	32g	33g

C06 Dropout



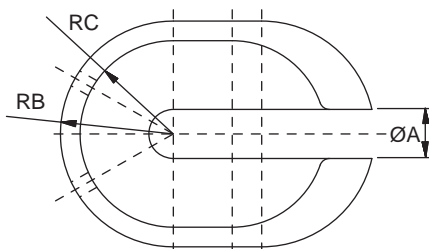
MODEL	C06
ØB	16
Øb	14
C	27
D	10
E	8
M	M10X1.0
X°	72.5°
Wt.	105g

C07 Dropout



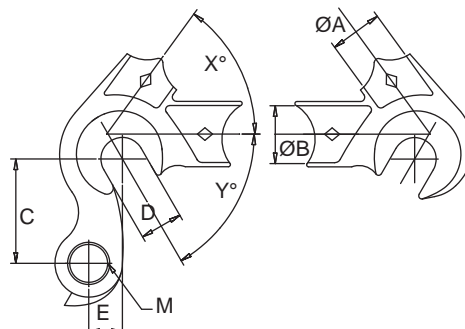
MODEL	C07-1
ØA	14
Øa	11.8
ØB	18.8
Øb	13.8
C	26
D	10
ØE	6
M1	M10X1.0
M2	M5X0.8
X°	48°
Wt.	205g

C08 Dropout



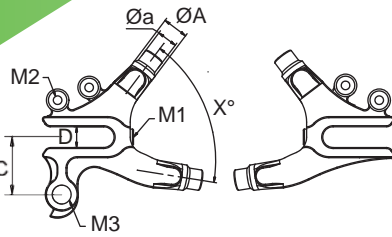
MODEL	C08
ØA	10
RB	23
RC	19
Wt.	205g

C13 Dropout



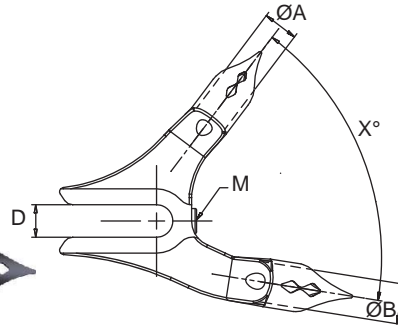
MODEL	C13
ØA	12.5
ØB	13.5
C	26
D	10
E	8
M	M10X1.0
X°	45°/54°/60°/66°/70°/74°
Y°	60°
Wt.	80g

C14 Dropout



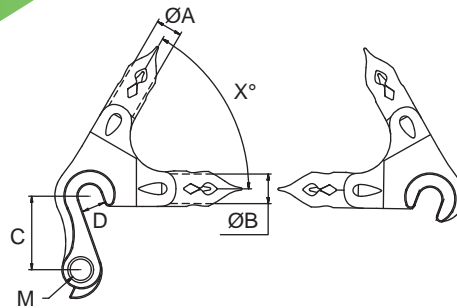
MODEL	C14	C14-1	C14-2
ØA	12.5	12.5	12.5
Øa	10	10	10
C	28	28	28
D	10	10	10
M1	M4X0.7	M4X0.7	M4X0.7
M2		M5X0.8	2-M5X0.8
M3	M10X1.0	M10X1.0	M10X1.0
X°	45°/55°/62°/66°/70°	45°/55°/62°/66°/70°	45°/55°/62°/66°/70°
Wt.	171g	177g	183g

C15 Dropout



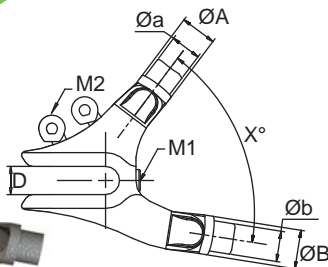
MODEL	C15
ØA	11
ØB	12.5
D	10
M	M4X0.7
X°	55°/62°/66°/70°
Wt.	180g

C16 Dropout



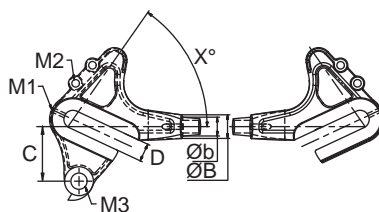
MODEL	C16
ØA	11
ØB	12.5
C	28
D	10
M	M10X1.0
X°	55°/60°/65°/70°/74°
Wt.	130g

C17 Dropout



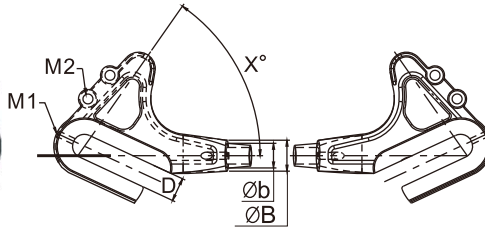
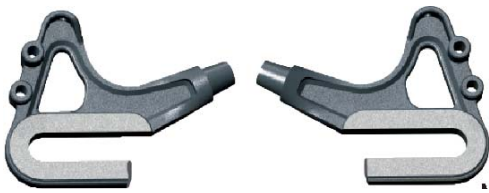
MODEL	C17	C17-1	C17-2
ØA	13	13	13
Øa	11	11	11
ØB	14	14	14
Øb	12	12	12
D	10	10	10
M1	M4X0.7	M4X0.7	M4X0.7
M2		M5X0.8	2-M5X0.8
X°	45°/55°/62°/66°/70°/74°	45°/55°/62°/66°/70°/74°	45°/55°/62°/66°/70°/74°
Wt.	171g	189g	197g

C18 Dropout



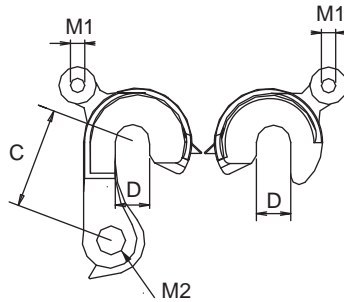
MODEL	C18-2
ØB	13.2
Øb	10.5
C	34.2
D	10
M1	M3X0.5
M2	2-M5X0.8
M3	M10X1.0
X°	55°
Wt.	200g

C19 Dropout



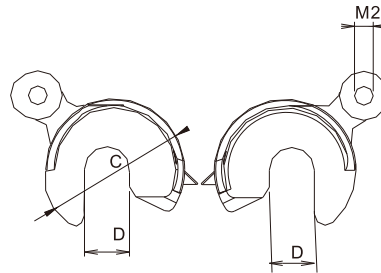
MODEL	C19-2
Ø B	13.2
Ø b	10.5
C	34.2
D	10
M1	M3X0.5
M2	2-M5X0.8
M3	
X°	55°
Wt.	185g

C20 Dropout



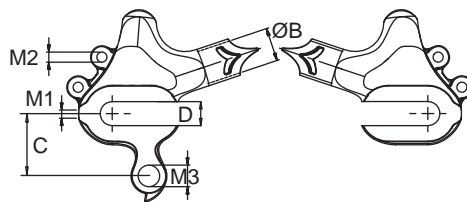
MODEL	C20-1
C	30
D	10
M1	M5X0.8
M2	M10X1.0
Wt.	104g

C21 Dropout



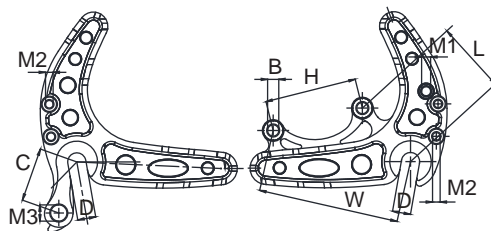
MODEL	C21-1
C	31.8
D	10
M1	
M2	M5X0.8
Wt.	83g

C22 Dropout



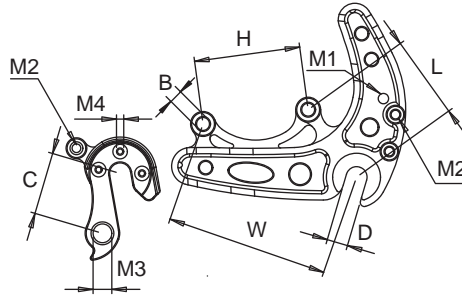
MODEL	C22-2
ØB	13.2
C	26
D	10
M1	M4X0.7
M2	2-M5X0.8
M3	M10X1.0
Wt.	179g

C23 Dropout



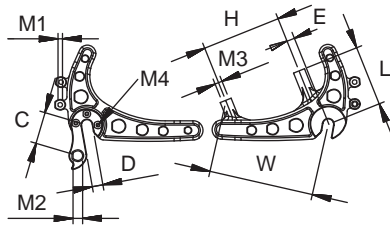
MODEL	C23-2
B	6.2
C	30
D	10
H	51
L	39.9
W	78.1
M1	M6X1.0
M2	2-M5X0.8
M3	M10x1.0
Wt.	336g

C49 Dropout



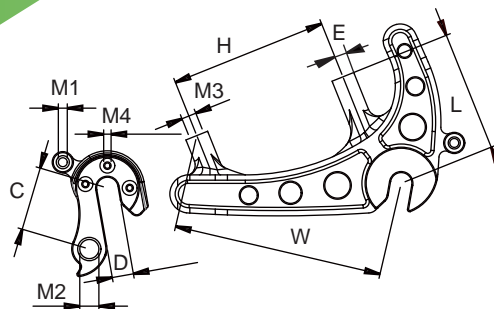
MODEL	C49	C49-1
B	6.2	6.2
C	30	30
D	10	10
H	51	51
L	39.9	39.9
W	78.1	78.1
M1	M6X1.0	M6X1.0
M2		M5X0.8
M3	M10X1.0	M10X1.0
M4	3-M3X0.5	3-M3X0.5
Wt.	230g	230g

C24 Dropout



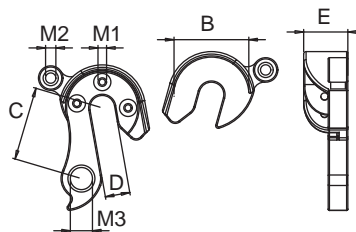
MODEL	C24	C24-1	C24-2
C	30	30	30
D	10	10	10
E	6.8	6.8	6.8
H	74.2	74.2	74.2
L	55.9	55.9	55.9
W	98.5	98.5	98.5
M1		M5X0.8	2-M5X0.8
M2	M10x1.0	M10x1.0	M10x1.0
M3	M6X1X14L	M6X1X14L	M6X1X14L
M4	3-M3X0.5	3-M3X0.5	3-M3X0.5
Wt.	341g	341g	341g

C45 Dropout



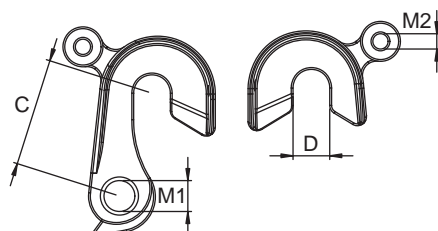
MODEL	C45	C45-1
C	30	30
D	10	10
H	74.2	74.2
E	6.8	6.8
L	55.9	55.9
W	98.5	98.5
M1		M5X0.8
M2	M10X1.0	M10X1.0
M3	M6X1X14L	M6X1X14L
M4	3-M3X0.5	3-M3X0.5
Wt.	246g	246g

C47 Dropout



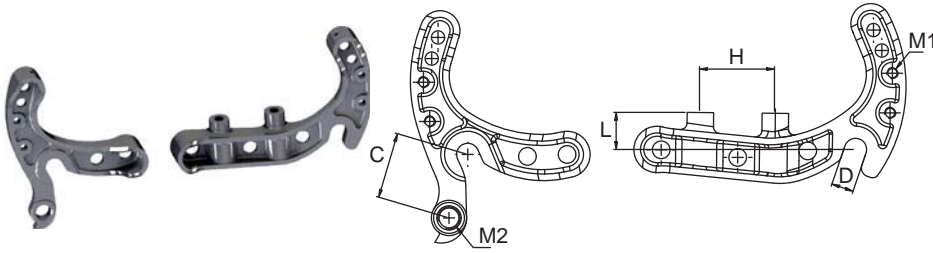
MODEL	C47	C47-1
B	30.5	30.5
C	30	30
D	10	10
E	18	18
M1	3-M3X0.5	3-M3X0.5
M2		M5X0.8
M3	M10X1.0	M10X1.0
Wt.	112g	112g

C51 Dropout



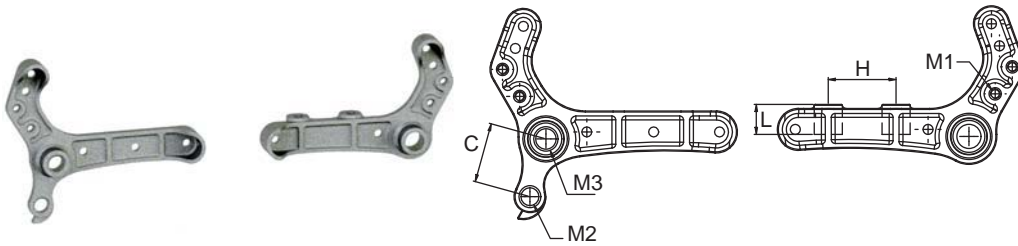
MODEL	C51	C51-1
C	30	30
D	10	10
M1	M10X1.0	M10X1.0
M2		M5X0.8
Wt.	100g	110g

C53 Dropout



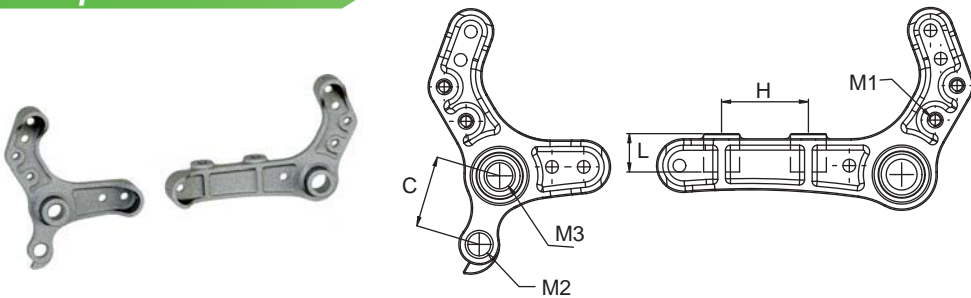
MODEL	C53-2
C	30
D	10
H	34
L	15
M1	2-M5X0.8
M2	M10X1.0
Wt.	313g

C55 Dropout



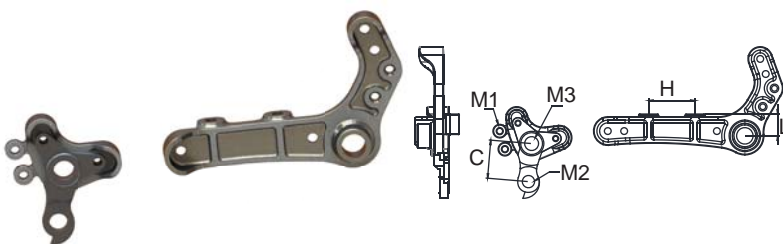
MODEL	C55-2
C	30
H	34
L	15
M1	2-M5X0.8
M2	M10X1.0
M3	M12X1.75/M12X1.5/M12X1.0
Wt.	358g

C64 Dropout



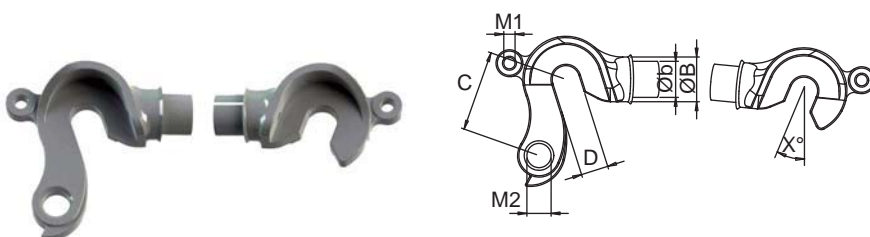
MODEL	C64-2
C	28
H	34
L	15
M1	2-M5X0.8
M2	M10X1.0
M3	M12X1.75/M12X1.5/M12X1.0
Wt.	318g

C79 Dropout



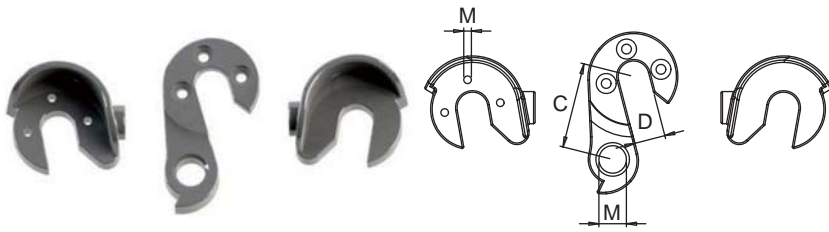
MODEL	C79	C79-1	C79-2
C	28	28	28
H	34	34	34
L	15	15	15
M1		M5X0.8	2-M5X0.8
M2	M10X1.0	M10X1.0	M10X1.0
M3	M12X1.75 M12X1.5 M12X1.0	M12X1.75 M12X1.5 M12X1.0	M12X1.75 M12X1.5 M12X1.0
Wt.	306g	314g	322g

C56 Dropout



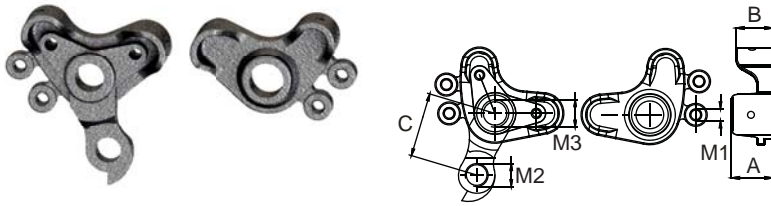
MODEL	C56	C56-1
ØB	16.6	16.6
Øb	13.4	13.4
C	30	30
D	10	10
M1		M5X0.8
M2	M10X1.0	M10X1.0
X°	17.5°	17.5°
Wt.	171g	171g

C58 Dropout



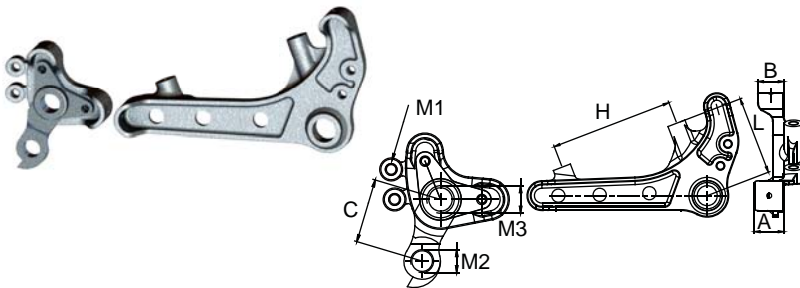
MODEL	C58H	C58R	C58L
C	28		
D	10	10	10
M	M10X1.0	3-M3X0.5	
Wt.	33g	38g	39g

C66 Dropout



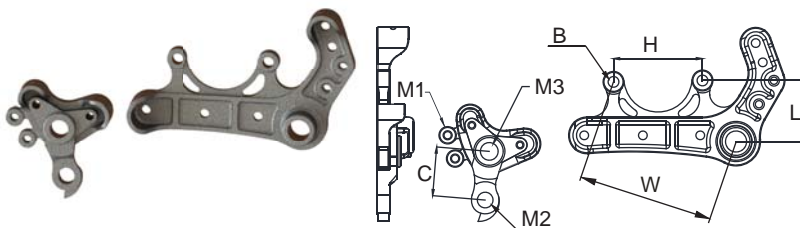
MODEL	C66	C66-1	C66-2
A	18	18	18
B	16	16	16
C	28	28	28
M1		M5X0.8	2-M5X0.8
M2	M10X1.0	M10X1.0	M10X1.0
M3	M12X1.75 M12X1.5 M12X1.0	M12X1.75 M12X1.5 M12X1.0	M12X1.75 M12X1.5 M12X1.0
Wt.	146g	152g	158g

C68 Dropout



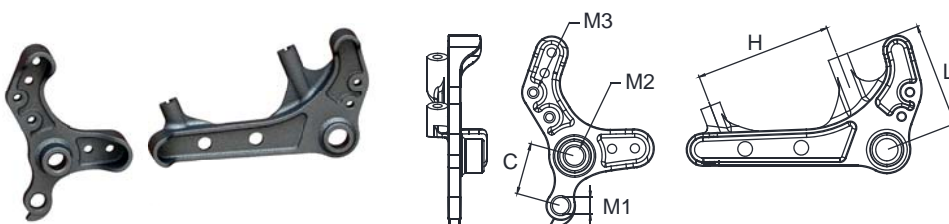
MODEL	C68	C68-1	C68-2
A	18	18	18
B	16	16	16
C	28	40	40
H	74.2	74.2	74.2
L	47.5	47.5	47.5
M1		M5X0.8	2-M5X0.8
M2	M10X1.0	M10X1.0	M10X1.0
M3	M12X1.75 M12X1.5 M12X1.0	M12X1.75 M12X1.5 M12X1.0	M12X1.75 M12X1.5 M12X1.0
Wt.	254g	260g	266g

C69 Dropout



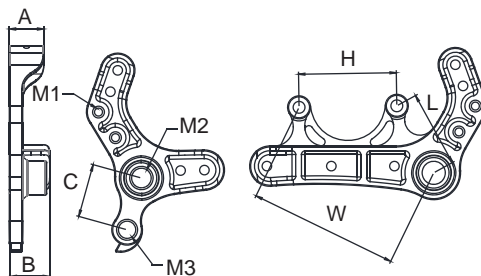
MODEL	C69	C69-1	C69-2
B	6.2	6.2	6.2
C	28	28	28
H	51	51	51
L	39.9	39.9	39.9
M1		M5X0.8	2-M5X0.8
M2	M10X1.0	M10X1.0	M10X1.0
M3	M12X1.75 M12X1.5 M12X1.0	M12X1.75 M12X1.5 M12X1.0	M12X1.75 M12X1.5 M12X1.0
W	78.1	78.1	78.1
Wt.	282g	290g	298g

C78 Dropout



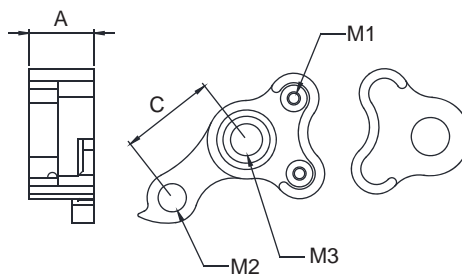
MODEL	C78-2
C	28
H	74.2
L	55.9
M1	M10X1.0
M2	M12X1.75 M12X1.5 M12X1.0
M3	2-M5X0.8
Wt.	325g

C80 Dropout



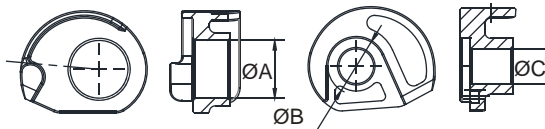
MODEL	C80-2
A	18
B	21
C	28
H	51
L	39.9
M1	2-M5X0.8
M2	M10X1.0
M3	M12X1.75 M12X1.5 M12X1.0
W	78.1
Wt.	324g

C81 Dropout



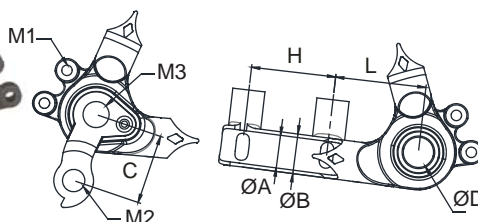
MODEL	C81
A	20.5
C	30
M1	2-M4X0.7
M2	M10X1.0
M3	M12X1.75 M12X1.5 M12X1.0
Wt.	155g

C82 Dropout



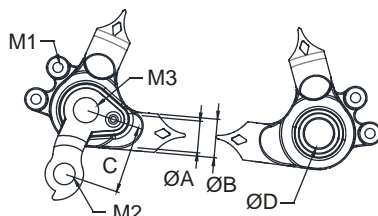
MODEL	C82
ØA	20
ØB	19.4
ØC	12.1
Wt.	134g

C83 Dropout



MODEL	C83	C83-1	C83-2
ØA	13.2	13.2	13.2
ØB	16	16	16
C	28	28	28
ØD	12.1	12.1	12.1
H	34	34	34
L	36.6	36.5	36.5
M1		M5X0.8	2-M5X0.8
M2	M10X1.0	M10X1.0	M10X1.0
M3	M12X1.75 M12X1.5 M12X1.0	M12X1.75 M12X1.5 M12X1.0	M12X1.75 M12X1.5 M12X1.0
Wt.	192g	201g	211g

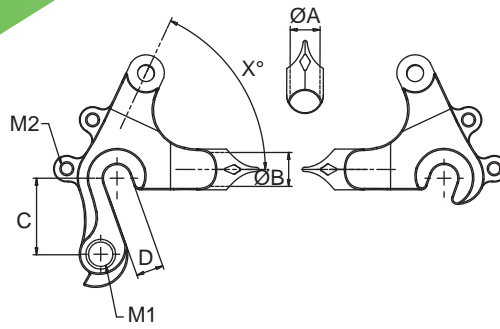
C84 Dropout



MODEL	C84	C84-1	C84-2
ØA	13.2	13.2	13.2
ØB	16	16	16
C	28	28	28
ØD	12.1	12.1	12.1
M1		M5X0.8	2-M5X0.8
M2	M10X1.0	M10X1.0	M10X1.0
M3	M12X1.75 M12X1.5 M12X1.0	M12X1.75 M12X1.5 M12X1.0	M12X1.75 M12X1.5 M12X1.0
Wt.	160g	165g	167g

C110/111

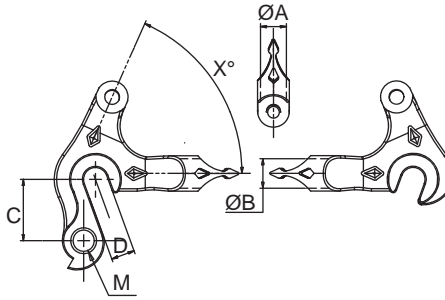
Dropout



MODEL	C110-2	C111-2
ØA	11	12.5
ØB	12.5	12.5
C	28	28
D	10	10
M1	M10X1.0	M10X1.0
M2	2-M5X0.8	2-M5X0.8
X°	65°	65°
Wt.	200g	200g

C120

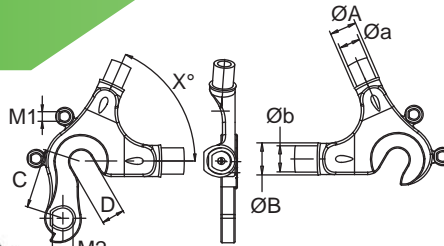
Dropout



MODEL	C120
ØA	11
ØB	12.5
C	26
D	10
M	M10X1.0
X°	66°
Wt.	200g

C210

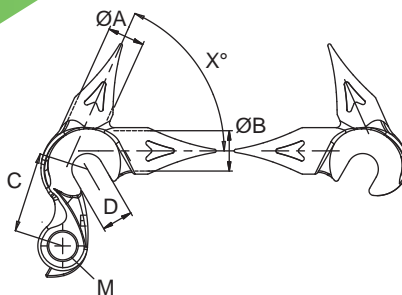
Dropout



MODEL	C210	C210-1	C210-2
ØA	11.8	11.8	11.8
Øa	9.1	9.1	9.1
ØB	14.2	14.2	14.2
Øb	11.5	11.5	11.5
C	26	26	26
D	10	10	10
M1		M5X0.8	2-M5X0.8
M2	M10X1.0	M10X1.0	M10X1.0
X°	54°/60°/66°/70°	54°/60°/66°/70°	54°/60°/66°/70°
Wt.	135g	137g	139g

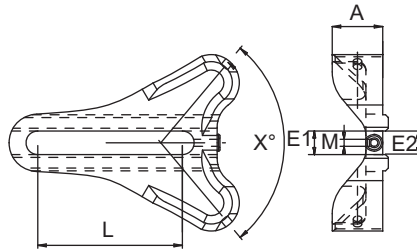
C230

Dropout



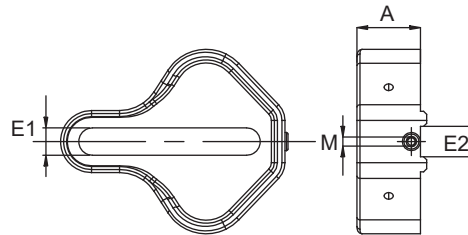
MODEL	C230
ØA	11
ØB	12.5
C	26
D	10
M	M10X1.0
X°	54°/60°/66°/70°
Wt.	77g

C25 Dropout



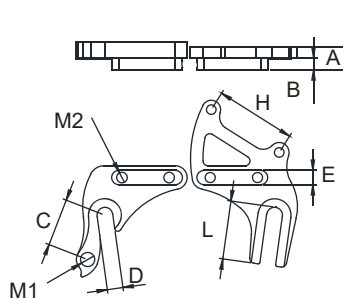
MODEL	C25
A	18
E1	9
E2	10
L	60
M	M3X0.5
X°	100°
Wt.	285g

C65 Dropout



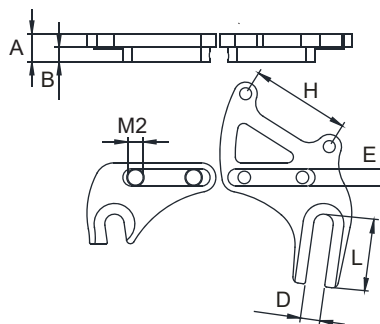
MODEL	C65
A	21
E1	9
E2	10
M	M3X0.5
Wt.	106g
MATERIAL	AL

C98 Dropout



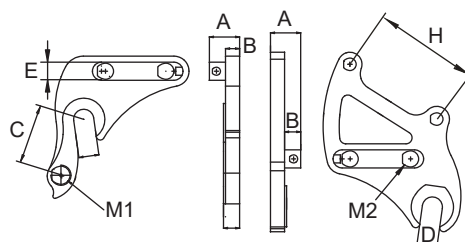
MODEL	C98
A	15
B	8
C	30
D	10
E	9
H	51
L	37
M1	M10X1.0
M2	2-M8X1.25
Wt.	121g
MATERIAL	AL

C99 Dropout



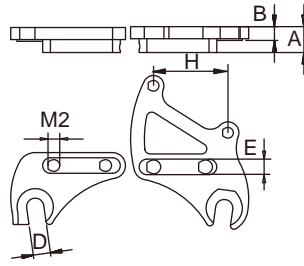
MODEL	C99
A	15
B	8
D	10
E	9
H	51
L	37
M2	2-M8X1.25
Wt.	99g
MATERIAL	AL

C31 Dropout



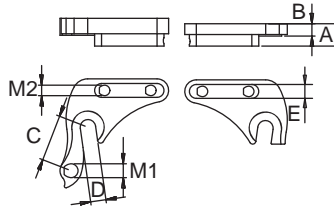
MODEL	C31
A	15
B	8
C	30
D	10
E	9
H	51
M1	M10X1.0
M2	2-M8X1.25
Wt.	114g
MATERIAL	AL

C32 Dropout



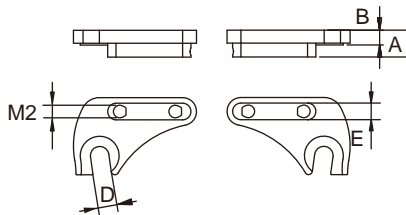
MODEL	C32
A	15
B	8
D	10
E	9
H	51
M2	2-M8X1.25
Wt.	94g
MATERIAL	AL

C33 Dropout



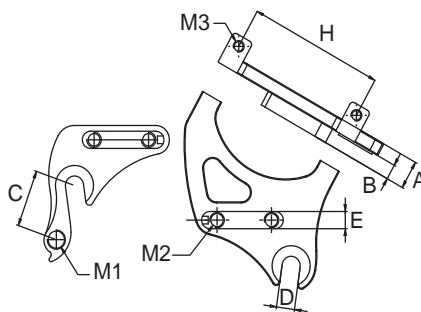
MODEL	C33
A	15
B	8
C	30
D	10
E	9
M1	M10X1.0
M2	M8X1.25
Wt.	97g
MATERIAL	AL

C34 Dropout



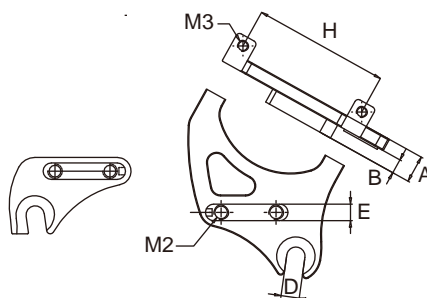
MODEL	C34
A	15
B	8
D	10
E	9
M2	2-M8X1.25
Wt.	76g
MATERIAL	AL

C61 Dropout



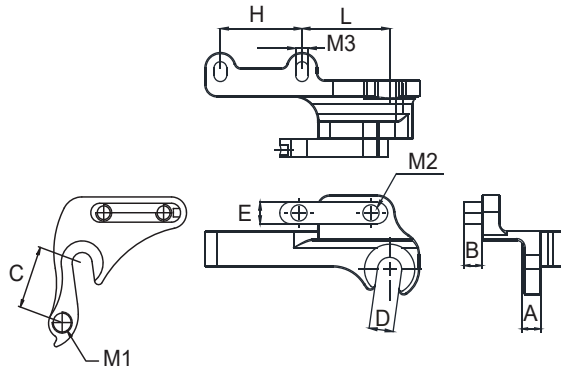
MODEL	C61
A	15
B	8
C	30
D	10
E	9
H	74.2
M1	M10X1.0
M2	2-M8X1.25
M3	2-M6X1.0
Wt.	145g
MATERIAL	AL

C62 Dropout



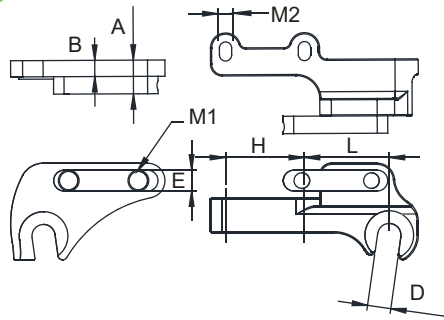
MODEL	C62
A	15
B	8
D	10
E	9
H	74.2
M2	2-M8X1.25
M3	2-M6X1.0
Wt.	124g
MATERIAL	AL

C86 Dropout



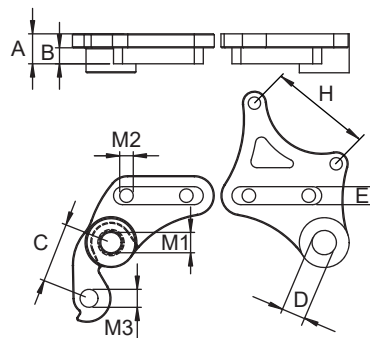
MODEL	C86
A	8
B	7.5
C	30
D	10
E	9
H	34
L	36.5
M1	M10X1.0
M2	2-M8X1.25
M3	2-5.3X8.3
Wt.	121g
MATERIAL	AL

C87 Dropout



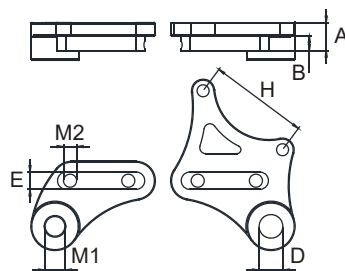
MODEL	C87
A	15
B	8
D	10
E	9
H	34
L	36.5
M1	2-M8X1.25
M2	2-5.3X8.3
Wt.	99g
MATERIAL	AL

C52 Dropout



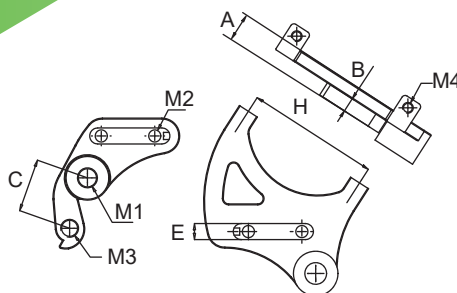
MODEL	C52
A	15
B	8
C	30
D	12.1
E	9
H	51
M1	M12X1.75 M12X1.5 M12X1.0
M2	2-M8X1.25
M3	M10X1.0
Wt.	123g
MATERIAL	AL

C95 Dropout



MODEL	C95
A	15
B	8
D	12.1
E	9
H	51
M1	M12X1.75 M12X1.5 M12X1.0
M2	2-M8X1.25
Wt.	115g
MATERIAL	AL

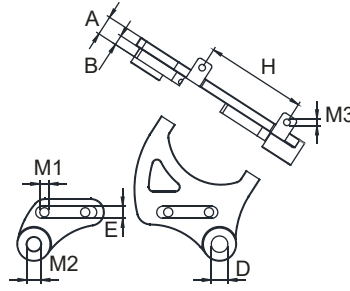
C59 Dropout



MODEL	C59
A	15
B	8
C	30
E	9
H	74.2
M1	M12X1.75 M12X1.5 M12X1.0
M2	2-M8X1.25
M3	M10X1.0
M4	2-M6X1.0
Wt.	160g
MATERIAL	AL

C96

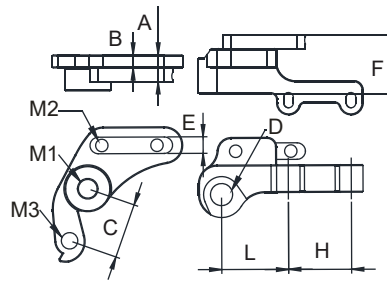
Dropout



MODEL	C96
A	15
B	8
D	12.1
E	9
H	74.2
M1	2-M8X1.25
M2	M12X1.75 M12X1.5 M12X1.0
M3	2-M6X1.0
Wt.	137g
MATERIAL	AL

C85

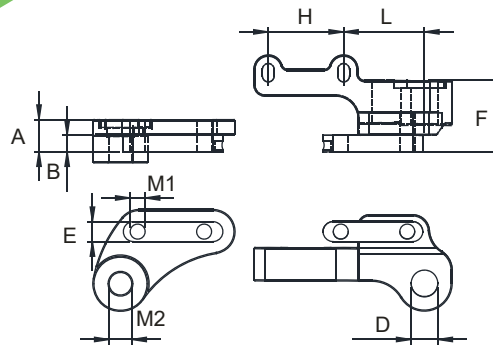
Dropout



MODEL	C85
A	15
B	8
C	30
D	12.1
E	9
F	32
H	34
L	36.5
M1	M12X1.75 M12X1.5 M12X1.0
M2	2-M8X1.25
M3	M10X1.0
Wt.	141g
MATERIAL	AL

C97

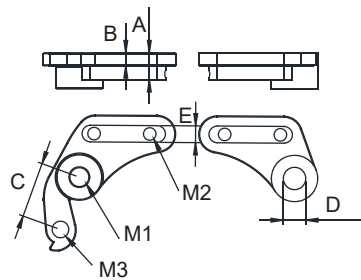
Dropout



MODEL	C97
A	15
B	8
D	12.1
E	9
F	32
H	34
L	36.5
M1	2-M8X1.25
M2	M12X1.75 M12X1.5 M12X1.0
Wt.	133g
MATERIAL	AL

C88

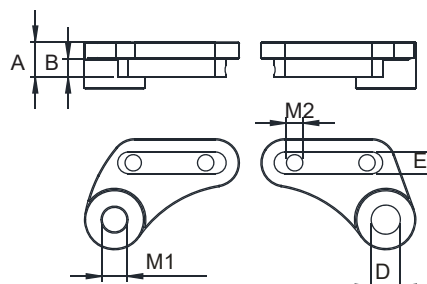
Dropout



MODEL	C88
A	15
B	8
C	30
D	12.1
E	9
M1	M12X1.75 M12X1.5 M12X1.0
M2	2-M8X1.25
M3	M10X1.0
Wt.	104g
MATERIAL	AL

C89

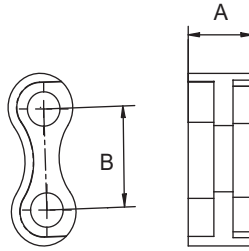
Dropout



MODEL	C89
A	15
B	8
D	12.1
E	9
M1	M12X1.75 M12X1.5 M12X1.0
M2	2-M8X1.25
Wt.	96g
MATERIAL	AL

C40

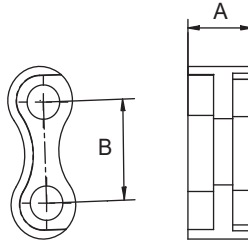
Dropout



MODEL	C40
A	20
B	30
Wt.	46g

C60

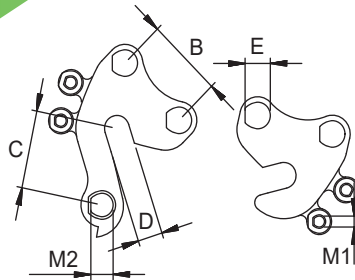
Dropout



MODEL	C60
A	20
B	30
Wt.	16g
MATERIAL	AL

C41

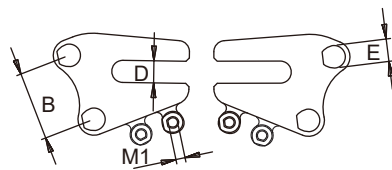
Dropout



MODEL	C41	C41-1	C41-2
B	30	30	30
C	30	30	30
D	10	10	10
E	10.2	10.2	10.2
M1		M5X0.8	2-M5X0.8
M2	M10X1.0	M10X1.0	M10X1.0
Wt.	48g	50g	52g
MATERIAL	AL	AL	AL

C42

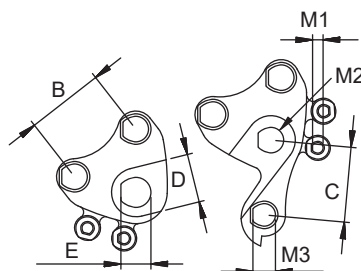
Dropout



MODEL	C42	C42-1	C42-2
B	30	30	30
D	10	10	10
E	10.2	10.2	10.2
M1		M5X0.8	2-M5X0.8
Wt.	68g	70g	72g
MATERIAL	AL	AL	AL

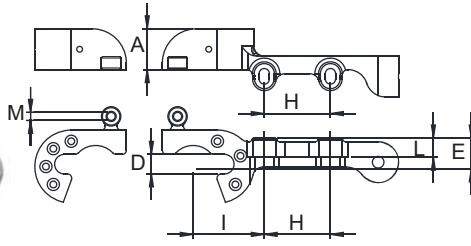
C43

Dropout



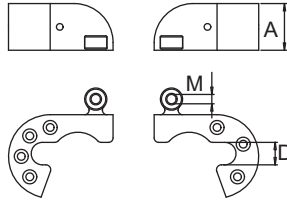
MODEL	C43	C43-1	C43-2
B	30	30	30
C	30	30	30
D	19.5	19.5	19.5
E	12.1	12.1	12.1
M1		M5X0.8	2-M5X0.8
M2	M12X1.75 M12X1.5 M12X1.0	M12X1.75 M12X1.5 M12X1.0	M12X1.75 M12X1.5 M12X1.0
M3	M10X1.0	M10X1.0	M10X1.0
Wt.	70g	73g	75g
MATERIAL	AL	AL	AL

C70 Dropout



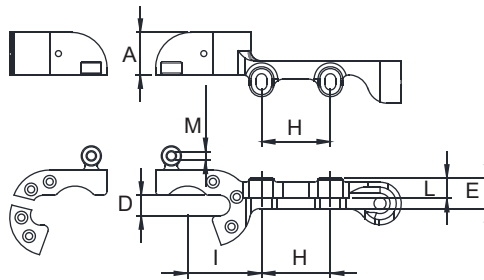
MODEL	C70	C70-1
A	21	21
D	10	10
E	16	16
H	34	34
I	36.5	36.5
L	10	10
M		M5X0.8
Wt.	142g	149g

C71 Dropout



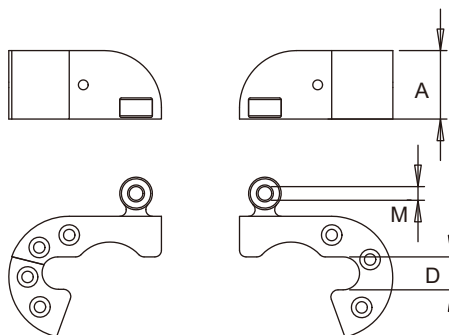
MODEL	C71	C71-1
A	21	21
D	10	10
M		M5X0.8
Wt.	40g	48g

C72 Dropout



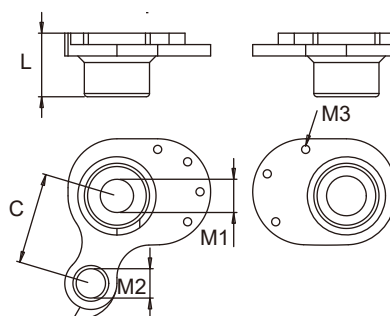
MODEL	C72	C72-1
A	21	21
D	10	10
E	16	16
H	34	34
I	36.5	36.5
L	10	10
M		M5X0.8
Wt.	142g	149g

C73 Dropout



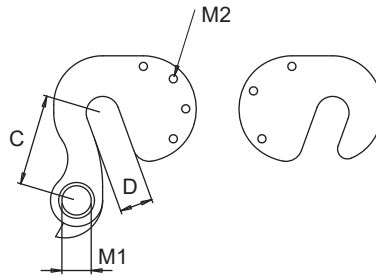
MODEL	C73
A	21
D	10
M	M5X0.8
Wt.	47g

C74 Dropout



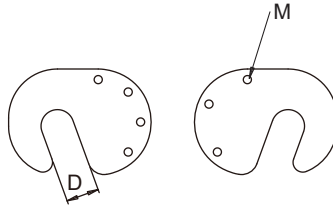
MODEL	C74
C	28
L	19.5
M1	M12X1.75 M12X1.5 M12X1.0
M2	M10X1.0
M3	M3X0.5
Wt.	45g
MATERIAL	AL

C75 Dropout



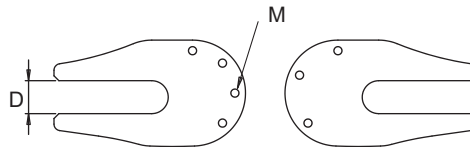
MODEL	C75
C	28
D	10
M1	M10X1.0
M2	M3X0.5
Wt.	36g
MATERIAL	AL

C76 Dropout



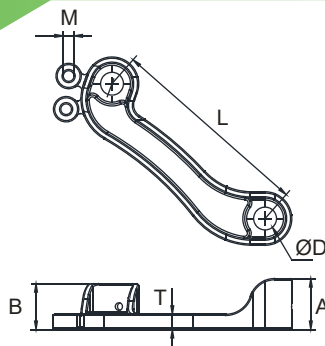
MODEL	C76
D	10
M	M3X0.5
Wt.	29g
MATERIAL	AL

C77 Dropout



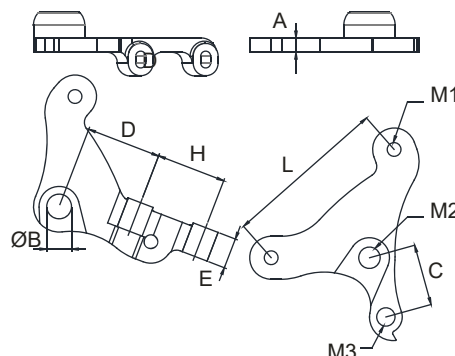
MODEL	C77
D	10
M	M3X0.5
Wt.	39g
MATERIAL	AL

C90 Dropout



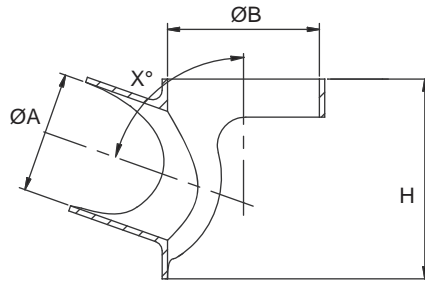
MODEL	C90	C90-1	C90-2
A	20	20	20
B	18	18	18
ØD	9	9	9
L	80	80	80
M		M5X0.8	2-M5X0.8
T	6	6	6
Wt.	162g	168g	175g

C91 Dropout



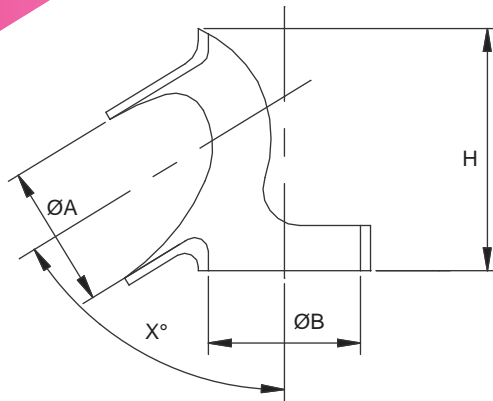
MODEL	C91
A	7
ØB	12.1
C	30
D	36.5
E	15
H	34
L	80
M1	2-M8X1.25
M2	M12X1.75 M12X1.5 M12X1.0
M3	M10X1.0
Wt.	139g
MATERIAL	AL

F01 Top Head Lug



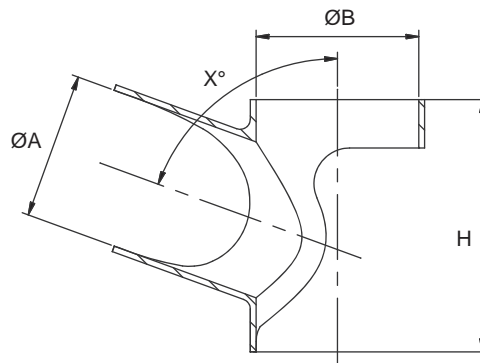
MODEL	F01
ØA	25.4
ØB	31.8
H	42
X°	70.5°
Wt.	25g

F02 Bottom Head Lug



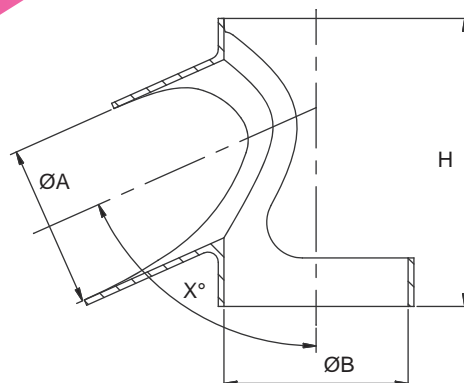
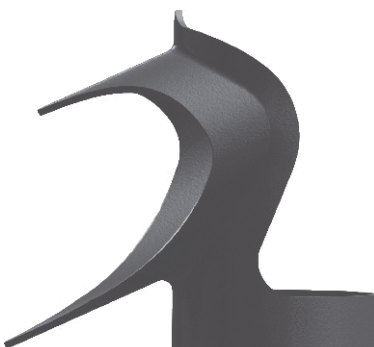
MODEL	F02
ØA	28.6
ØB	31.8
H	46
X°	61.5°
Wt.	25g

F03/F05 Top Head Lug



MODEL	F03	F05
ØA	28.6	28.6
ØB	31.8	36
H	49.5	49.5
X°	70°/73°/76°/79°	73°/76°/79°
Wt.	25g	23g

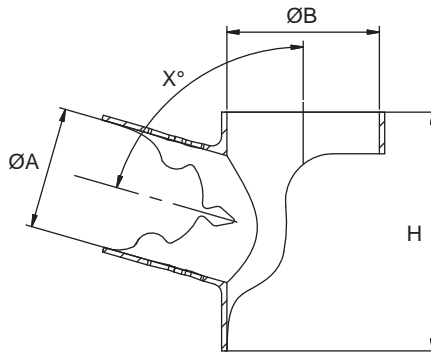
F04/F06 Bottom Head Lug



MODEL	F04	F06
ØA	31.8	31.8
ØB	31.8	36
H	56.5	56.5
X°	58°/60°/63°/66°/69°	58°/60°/63°/66°
Wt.	30g	27g

F07

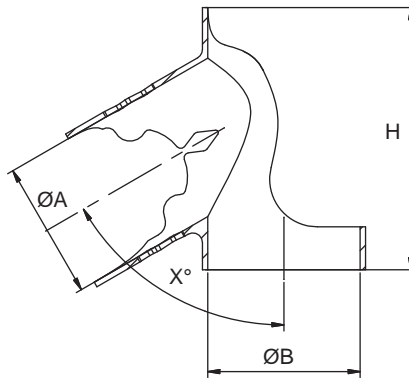
Top Head Lug



MODEL	F07
ØA	25.4
ØB	31.8
H	50
X°	71°/74°/77°/80°
Wt.	28g

F08

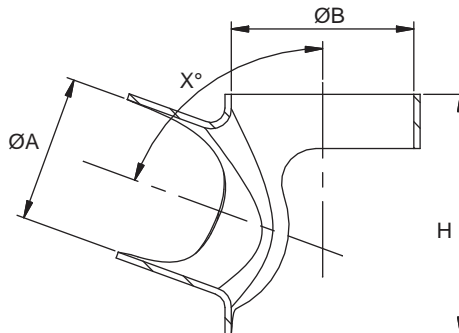
Bottom Head Lug



MODEL	F08
ØA	28.6
ØB	31.8
H	55
X°	57°/60°/63°/66°
Wt.	32g

F09

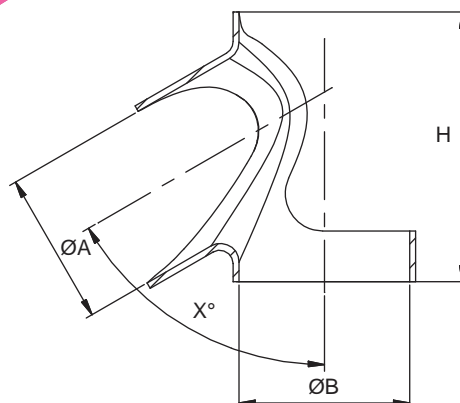
Top Head Lug



MODEL	F09
ØA	25.4
ØB	31.8
H	42
X°	67°/70°/73°/75°/78°/81°
Wt.	19g

F10

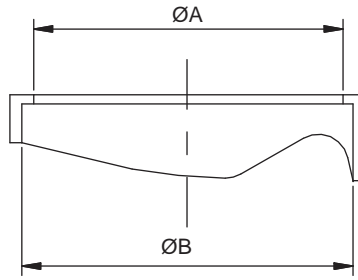
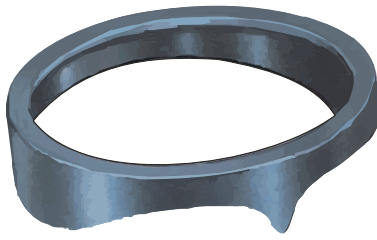
Bottom Head Lug



MODEL	F10
ØA	28.6
ØB	31.8
H	50.5
X°	58°/60°/61.8°/63°/66°
Wt.	24g

F11

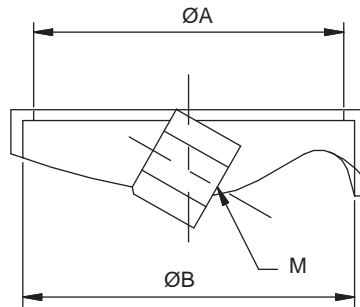
Head Lug



MODEL	F11
ØA	30.4
ØB	32.4
Wt.	7g

F12

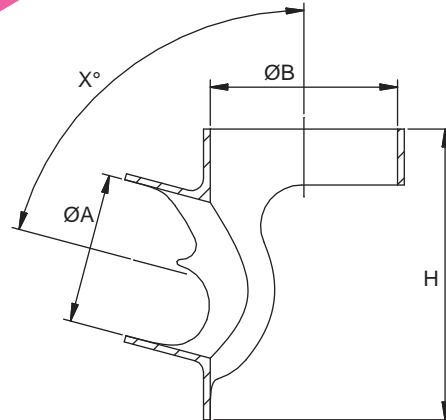
Top Head Lug



MODEL	F12
ØA	30.4
ØB	32.4
M	2-M5X0.8
Wt.	11g

F111

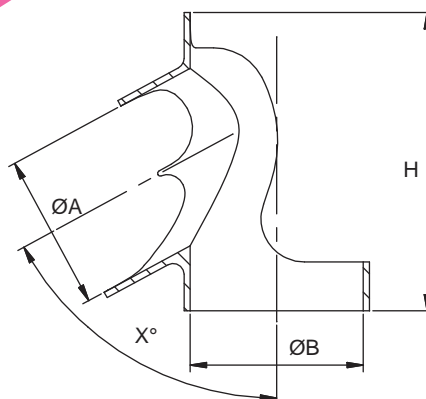
Top Head Lug



MODEL	F111
ØA	25.4
ØB	31.8
H	49.5
X°	72.5°/75.1°/77.9°
Wt.	18g

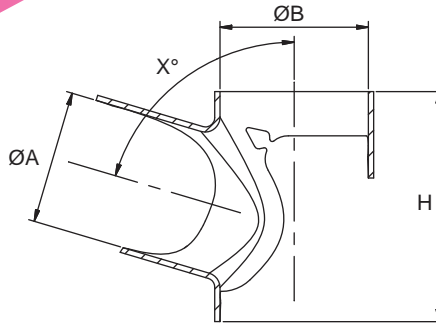
F110

Bottom Head Lug



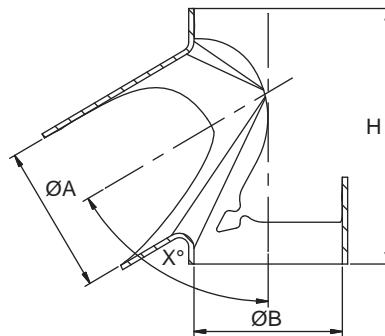
MODEL	F110
ØA	28.6
ØB	31.8
H	55
X°	58.4°/61.6°/77.5°
Wt.	23g

F121 Top Head Lug



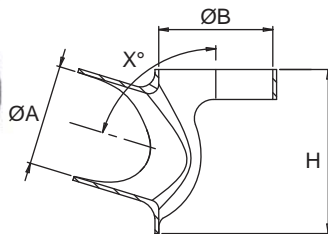
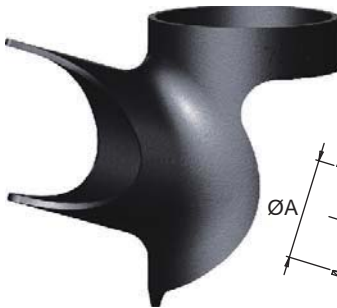
MODEL	F121
ØA	28.6
ØB	31.8
H	49
X°	70.5°/73.5°/77°
Wt.	21g

F120 Bottom Head Lug



MODEL	F120
ØA	31.8
ØB	31.8
H	55
X°	59.5°/63°/66°
Wt.	24g

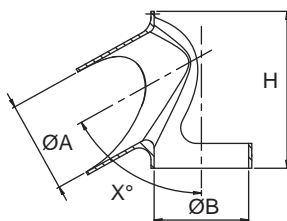
F131/F135/F141/F151/F161 Top Head Lug



MODEL	F131	F141	F135
ØA	25.4	28.6	25.4
ØB	31.8	31.8	36
H	52	52	55
X°	72°/73.5°/75°/77°/79°/88°	72°/73.5°/75°/77°/79°/88.6°	73°
Wt.	28g	30g	28g

MODEL	F151	F161
ØA	28.6	31.8
ØB	36	36
H	52	52
X°	72°/73.5°/75°/77°/79°/88°/106°/108°	73°/75°/77°/80°
Wt.	35g	38g

F130/F132/F134/F140/F150/F160 Bottom Head Lug

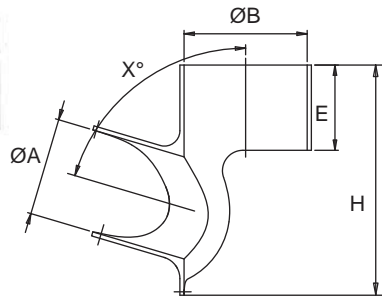


MODEL	F130	F140	F132
ØA	28.6	31.8	25.4
ØB	31.8	31.8	31.8
H	56	60	60
X°	58°/59.5°/61°/63°	58°/59.5°/61°/63°	61°
Wt.	38g	40g	40g

MODEL	F150	F160	F134
ØA	31.8	34.9	28.6
ØB	36	36	36
H	60	60	60
X°	58°/60°/62°/64°	59°/61°	77.30°
Wt.	45g	48g	48g

F133/F143/F153

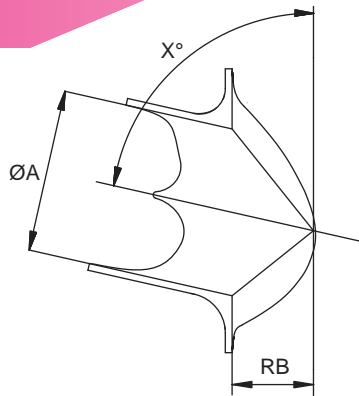
Top Head Lug



MODEL	F133	F143	F153
ØA	25.4	28.6	28.6
ØB	31.8	31.8	36
E	25	25	25
H	67	67	67
X°	73.5°	73.5°	73.5°
Wt.	55g	55g	55g

F182

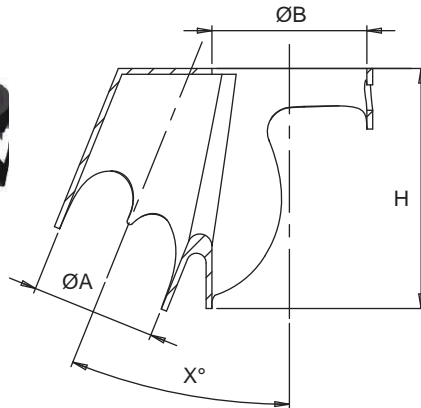
Top Head Lug



MODEL	F182
ØA	28.6
RB	15.9
X°	77°
Wt.	33g

F173/F183

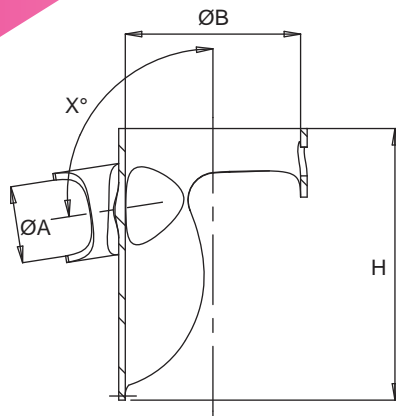
Top Head Lug



MODEL	F173	F183
ØA	25.4	28.6
ØB	31.8	31.8
H	49.5	49.5
X°	22°	22°/55°
Wt.	55g	55g

F175

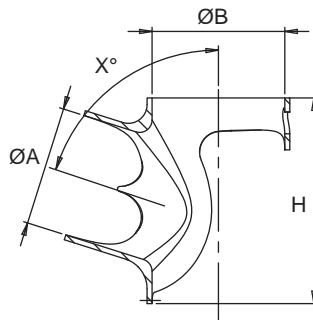
Top Head Lug



MODEL	F175
ØA	14X2
ØB	31.8
H	49.5
X°	98.8°
Wt.	29g

F171/F181/F191

Top Head Lug

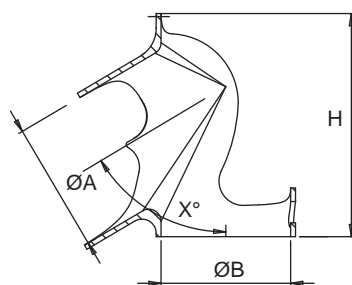


MODEL	F171	F181
ØA	25.4	28.6
ØB	31.8	31.8
H	49.5	49.5
X°	73.5°/79°/105.2°/120°	72.5°/75°/79°/98.8°/108°
Wt.	28g	30g

MODEL	F191
ØA	28.6
ØB	36
H	49.5
X°	73.5°/75°/79°/98°/108°
Wt.	35g

F170/F180/F190

Bottom Head Lug

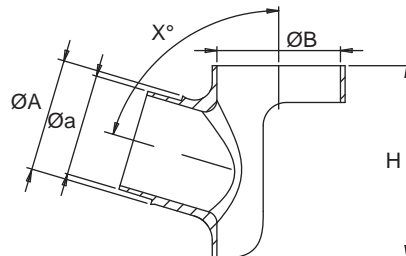


MODEL	F170	F180
ØA	28.6	31.8
ØB	31.8	31.8
H	55	55
X°	59.5°/61.8°/63°/64.6°	59.5°/63°/66.8°
Wt.	35g	40g

MODEL	F190
ØA	31.8
ØB	36
H	55
X°	59.5°/63°
Wt.	40g

F211/F221/F223

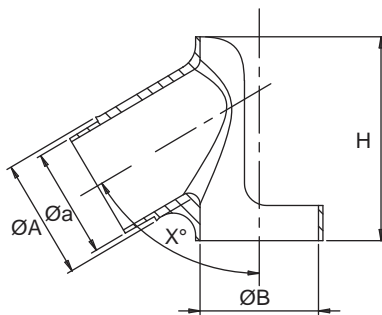
Top Head Lug



MODEL	F211	F221	F223
ØA	25.4	28.6	28.6
Øa	23.5	26.4	26.4
ØB	31.8	31.8	36
H	49.5	49.5	49.5
X°	72.5°/75°	73.5°	73.5°
Wt.	46g	51g	53g

F210/F220/F222

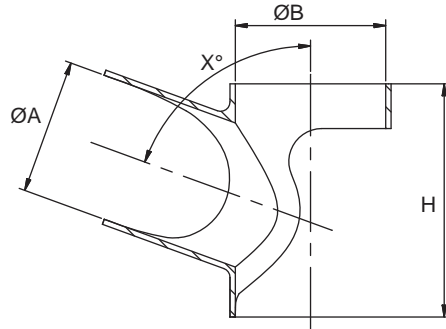
Bottom Head Lug



MODEL	F210	F220	F222
ØA	28.6	31.8	31.8
Øa	26.4	29.9	29.9
ØB	31.8	31.8	36
H	55	55	55
X°	59.5°/62°	59.5°/62°	59.5°
Wt.	73g	73g	73g

F231/F241/F243

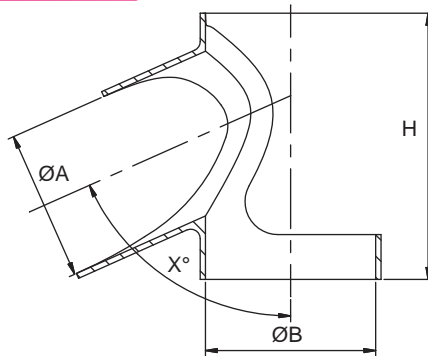
Top Head Lug



MODEL	F231	F241	F243
ØA	25.4	28.6	28.6
ØB	31.8	31.8	36
H	52	52	52
X°	71°/72°/73°/74°/75°	71°/72°/73°/74°/76°/78°	73°/75°/77°
Wt.	33g	35g	37g

F230/F240/F242

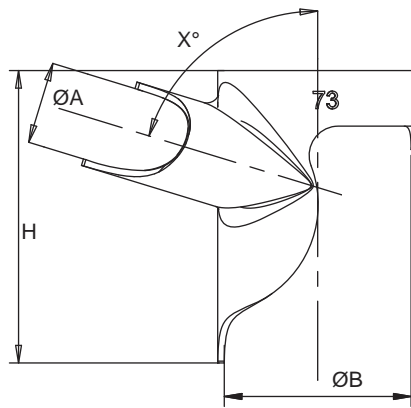
Bottom Head Lug



MODEL	F230	F240	F242
ØA	28.6	31.8	31.8
ØB	31.8	31.8	36
H	60	60	60
X°	59°/60°/61°/62°/63°	58.5°/60°/62°	58°/60°/62°
Wt.	42g	43g	45g

F251

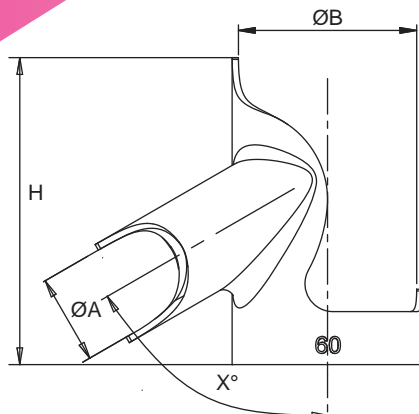
Top Head Lug



MODEL	F251
ØA	14
ØB	31.8
H	50
X°	73°/75.1°/78°
Wt.	33g

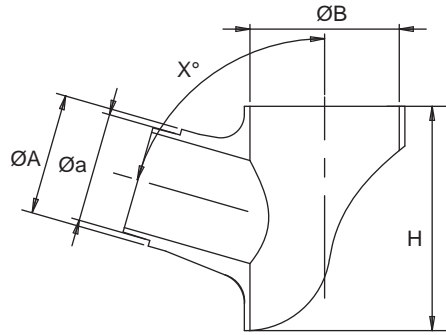
F250

Bottom Head Lug



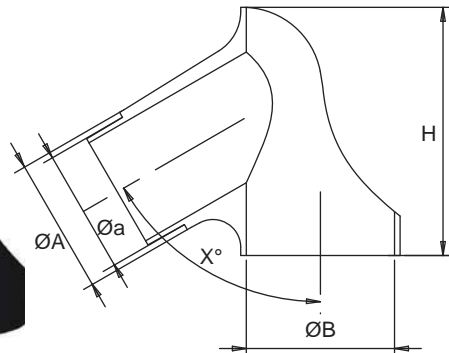
MODEL	F250
ØA	16
ØB	31.8
H	55
X°	60°/62°
Wt.	40g

F271/F281/F283 Top Head Lug



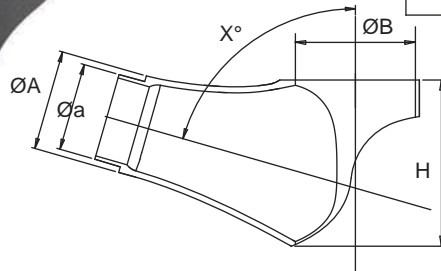
MODEL	F271	F281	F283
ØA	25.4	28.6	28.6
Øa	23.6	26.4	26.4
ØB	31.8	31.8	36
H	48	48	48
X°	74°	74°	74°/76°
Wt.	72g	74g	76g

F270/F280/F282 Bottom Head Lug



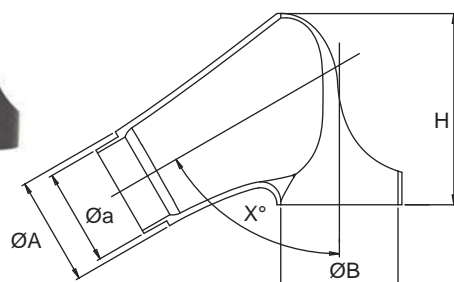
MODEL	F270	F280	F282
ØA	28.6	31.8	31.8
Øa	26.4	29.9	29.9
ØB	31.8	31.8	36
H	53.5	53.5	53.5
X°	58°/60°/62°	60°	60°
Wt.	85g	87g	90g

F311/F321/F323 Top Head Lug



MODEL	F311	F321	F323
ØA	25.4	28.6	28.6
Øa	23.6	26.8	26.8
ØB	31.8	31.8	36
H	50	50	50
X°	74°	74°	74°
Wt.	72g	74g	76g

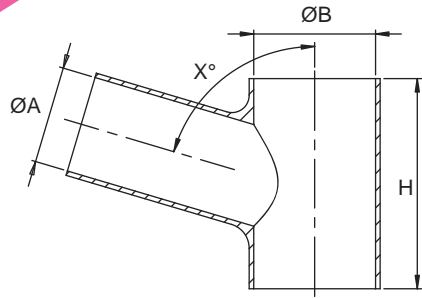
F310/F322 Bottom Head Lug



MODEL	F310	F322
ØA	28.6	31.8
Øa	26.8	30
ØB	31.8	36
H	58.8	58.8
X°	60°/62°	60°/62°
Wt.	85g	90g

F331/F341

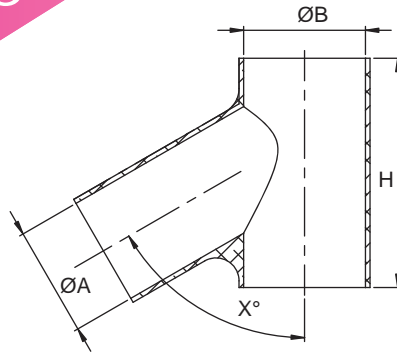
Top Head Lug



MODEL	F331	F341
ØA	25.4	28.6
ØB	31.8	31.8
H	55	55
X°	73.5°	73.5°
Wt.	72g	72g

F330/F340

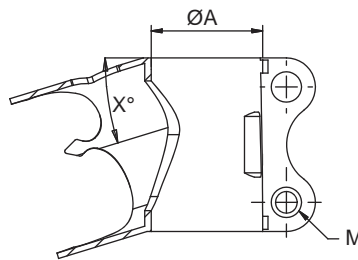
Bottom Head Lug



MODEL	F330	F340
ØA	28.6	31.8
ØB	31.8	31.8
H	60	60
X°	60°	60°
Wt.	72g	72g

G120/G127

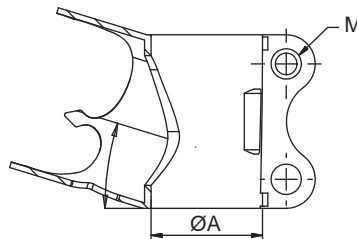
Clamp



MODEL	G120	G127
ØA	25.4	28.6
M	M6X1	M6X1
X°	17°	17°
Wt.	66g	70g

G121/G122

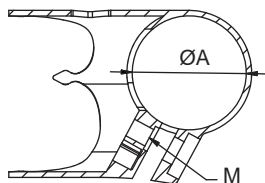
Clamp



MODEL	G121	G122
ØA	25.4	28.6
M	M6X1	M6X1
X°	17°	17°
Wt.	66g	70g

H120/H127

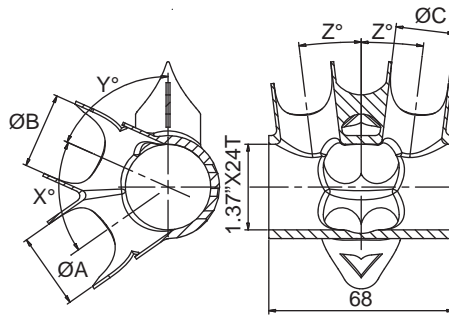
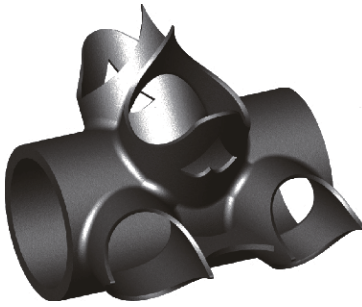
Clamp



MODEL	H120	H127
ØA	25.4	31.8
M	M5X0.8	M5X0.8
Wt.	45g	48g

J01/J10/J11

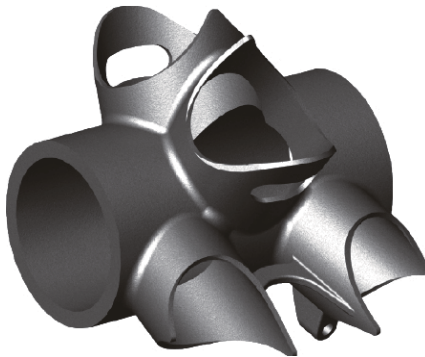
B.B. Shell



MODEL	J01	J10	J11
ØA	28.6	28.6	28.6
ØB	28.6	28.6	28.6
ØC	22.2	22.2	22.2
X°	59°	59°	61.6°
Y°	61°	66°	65.5°
Z°	7°	7°	7°
Wt.	145g	145g	145g

J02/J03/J04/J05/J12/J13

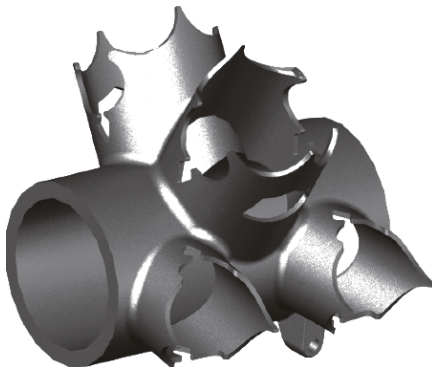
B.B. Shell



MODEL	J02	J03	J04	J05	J12	J13
ØA	31.8	31.8	31.8	31.8	31.8	31.8
ØB	28.6	28.6	28.6	28.6	28.6	28.6
ØC	22.2	22.2	22.2	22.2	22.2	22.2
X°	58.5°	60.5°	62.5°	62°	59°	61.6°
Y°	65°	65°	65°	69°	68°	62.9°
Z°	7°	7°	7°	7°	7°	7°
Wt.	168g	168g	168g	168g	168g	168g

J06/J07/J08/J09/J17/J18

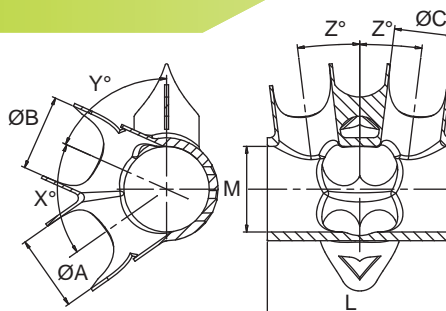
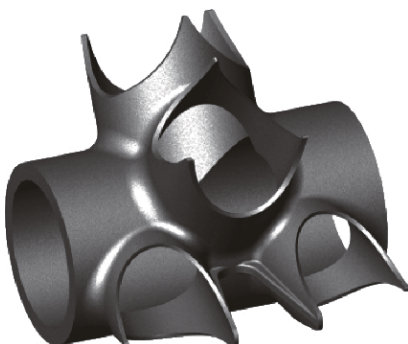
B.B. Shell



MODEL	J06	J07	J08	J09	J17	J18
ØA	28.6	28.6	28.6	28.6	28.6	28.6
ØB	28.6	28.6	28.6	28.6	28.6	28.6
ØC	22.2	22.2	22.2	22.2	22.2	22.2
X°	60.5°	68°	62.9°	61.6°	61.9°	58.4°
Y°	64°	62°	58.4°	62.9°	68.2°	62.9°
Z°	7°	7°	7°	7°	7°	7°
Wt.	175g	175g	175g	175g	175g	175g

J15

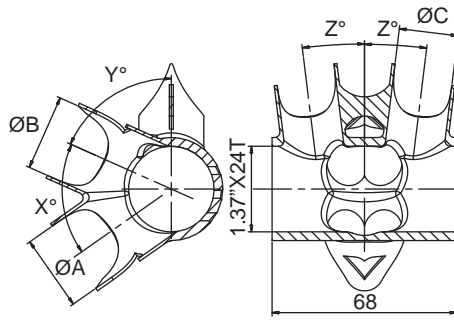
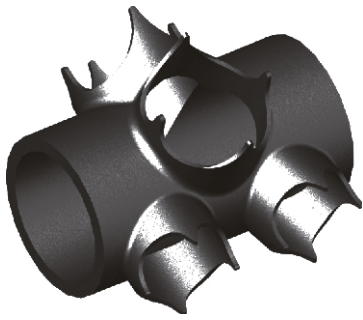
B.B. Shell



MODEL	J15
ØA	31.8
ØB	28.6
ØC	22.2
L	68/70
M	1.37\"/>
X°	60.5°
Y°	61.5°
Z°	7°
Wt.	175g

J110/J111/J112/J113

B.B. Shell



MODEL	J110	J111
ØA	28.6	28.6
ØB	28.6	28.6
ØC	22.2	22.2
X°	79.5°	79.5°
Y°	70.4°	75°
Z°	7°	7°
Wt.	154g	154g

MODEL	J112	J113
ØA	28.6	28.6
ØB	28.6	28.6
ØC	22.2	22.2
X°	60.43°	61.8°
Y°	62.72°	67.5°
Z°	7°	7°
Wt.	154g	154g

J120/J121/J122/J123

B.B. Shell



MODEL	J120	J121
ØA	31.8	31.8
ØB	28.6	28.6
ØC	22.2	22.2
X°	58.7°	59.3°
Y°	65.2°	62.3°
Z°	7°	7°
Wt.	147g	147g

MODEL	J122	J123
ØA	31.8	31.8
ØB	28.6	28.6
ØC	22.2	22.2
X°	61.6°	62.5°
Y°	65.5°	59.5°
Z°	7°	7°
Wt.	147g	147g

J130/J140/J160

B.B. Shell

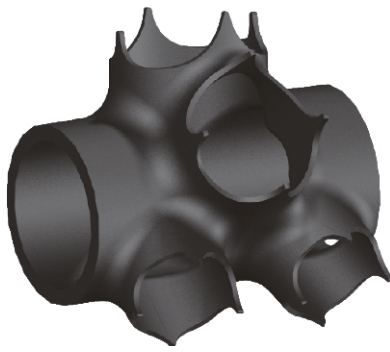


MODEL	J130A	J130B	J130C	J130D	J130E	J130F	J131A
ØA	28.6	28.6	28.6	28.6	28.6	28.6	25.4
ØB	28.6	28.6	28.6	28.6	28.6	28.6	28.6
ØC	22.2	22.2	22.2	22.2	22.2	22.2	22.2
X°	57.38°	58.78°	59.89°	61.14°	62.14°	75.30°	59.5°
Y°	64.8°	63.55°	63.25°	63.25°	63.25°	78°	67°
Z°	7°	7°	7°	7°	7°	7°	7°
Wt.	175g	175g	175g	175g	175g	175g	175g

MODEL	J140A	J140B	J140C	J140D	J140E	J160
ØA	31.8	31.8	31.8	31.8	31.8	34.9
ØB	28.6	28.6	28.6	28.6	28.6	31.8
ØC	22.2	22.2	22.2	22.2	22.2	22.2
X°	58°	59°	60°	61°	62°	60.2°
Y°	64°	64°	64°	64°	64°	63.2°
Z°	7°	7°	7°	7°	7°	7°
Wt.	175g	175g	175g	175g	175g	175g

J170/J180/J190

B.B. Shell

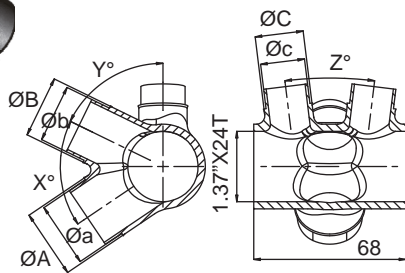
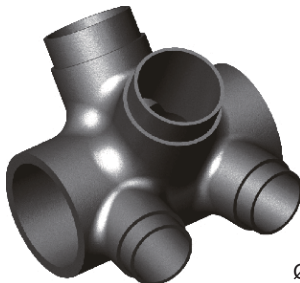


MODEL	J170A	J170B	J170C	J170D
ØA	28.6	28.6	28.6	28.6
ØB	28.6	28.6	28.6	28.6
ØC	22.2	22.2	22.2	22.2
X°	57.38°	59.3°	61.5°	62.14°
Y°	64.8°	64°	67.3°	63.25°
Z°	7°	7°	7°	7°
Wt.	147g	147g	147g	147g

MODEL	J180A	J180B	J180C	J180D	J190
ØA	31.8	31.8	31.8	31.8	31.8
ØB	28.6	28.6	28.6	28.6	31.8
ØC	22.2	22.2	22.2	22.2	22.2
X°	56.8°	58°	60°	62°	67.4°
Y°	62.9°	64.2°	64.3°	64°	58.7°
Z°	7°	7°	7°	7°	7°
Wt.	147g	147g	147g	147g	147g

J210/J220

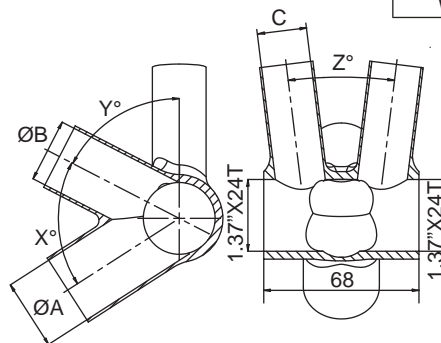
B.B. Shell



MODEL	J210B	J210C	J210D	J220B	J220C	J220D
ØA	28.6	28.6	28.6	31.8	31.8	31.8
Øa	26.8	26.8	26.8	29.9	29.9	29.9
ØB	28.6	28.6	28.6	28.6	28.6	28.6
Øb	26.8	26.8	26.8	26.8	26.8	26.8
ØC	22.2	22.2	22.2	22.2	22.2	22.2
Øc	20.35	20.35	20.35	20.35	20.35	20.35
X°	58.4°	60°	60°	58.4°	60°	61.9°
Y°	62.9°	64°	68°	62.9°	64°	68.2°
Z°	7°	7°	7°	7°	7°	7°
Wt.	220g	220g	220g	230g	230g	230g

J330/J336/J340

B.B. Shell



MODEL	J330B	J336A	J340A
ØA	28.6	28.6	31.8
ØB	28.6	28.6	28.6
C	22.2	27X17	22.2
X°	60°	58°	60°
Y°	64°	67.5°	62.72°
Z°	7°	7°	7°
Wt.	300g	302g	312.5g

J136/J146/J156/J166

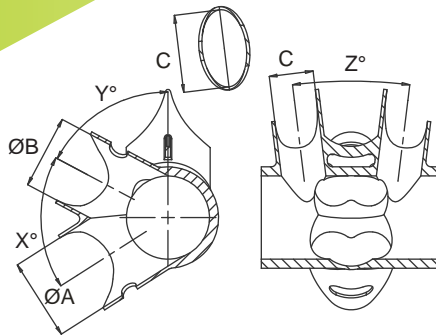
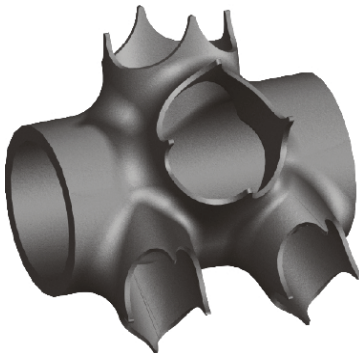
B.B. Shell



MODEL	J136B	J146A	J146B	J156	J166A	J166B	J166C
ØA	28.6	31.8	31.8	31.8	34.9	34.9	34.9
ØB	28.6	28.6	28.6	31.8	31.8	31.8	31.8
C	27X17	30X17	30X17	30X17	30X17	30X17	30X17
X°	59.5°	57.38°	60.5°	60°	57°	60°	63°
Y°	62.5°	64.8°	62°	64°	64°	62°	65°
Z°	7°	7°	7°	7°	7°	7°	7°
Wt.	175g	175g	175g	175g	175g	175g	175g

J176/J186

B.B. Shell

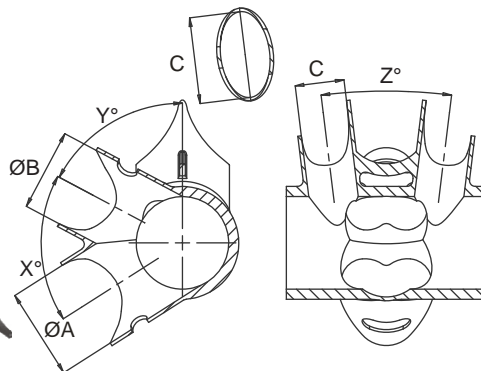
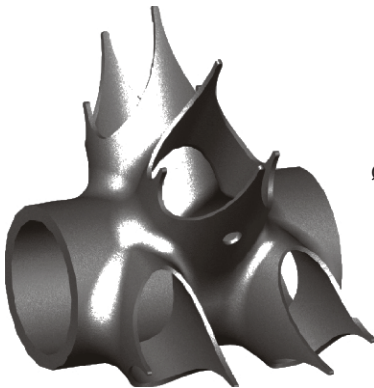


MODEL	J176B	J176D
ØA	28.6	28.6
ØB	28.6	28.6
C	27X17	27X17
X°	59.5°	61.9°
Y°	62.5°	68.2°
Z°	7°	7°
Wt.	175g	175g

MODEL	J186A	J186C
ØA	31.8	31.8
ØB	28.6	28.6
C	30X17	30X17
X°	58°	60°
Y°	64°	64.3°
Z°	7°	7°
Wt.	180g	180g

J236/J246

B.B. Shell

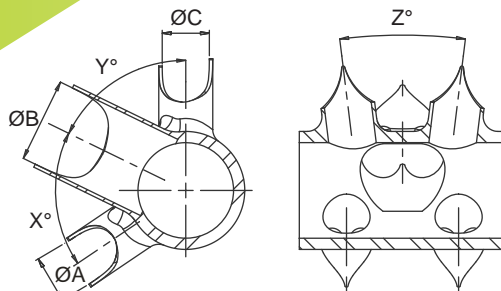
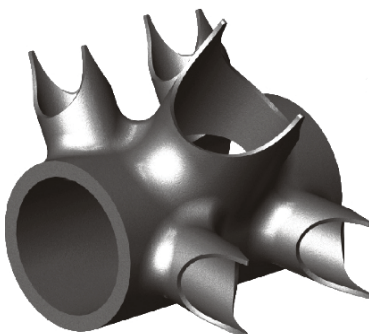


MODEL	J236A	J236C
ØA	28.6	28.6
ØB	28.6	28.6
C	30X17	30X17
X°	57.38°	60°
Y°	64.8°	64°
Z°	7°	7°
Wt.	178g	178g

MODEL	J246A	J246C
ØA	31.8	31.8
ØB	28.6	28.6
C	30X17	30X17
X°	58°	60°
Y°	64°	64°
Z°	7°	7°
Wt.	183g	183g

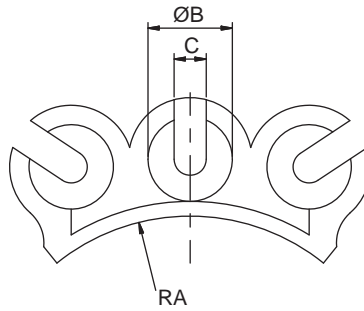
J250

B.B. Shell



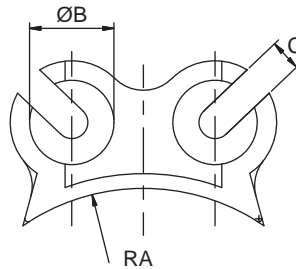
MODEL	J250
ØA	16
ØB	28.6
ØC	16
X°	60°
Y°	64°
Z°	7°
Wt.	175g

E02 Cable Stopper



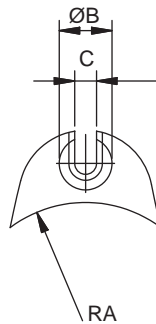
MODEL	E02
RA	15.9
ØB	6.3
C	2.4
Wt.	12g

E06 Cable Stopper



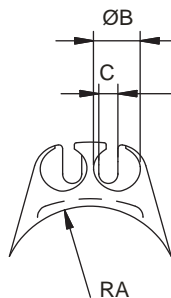
MODEL	E06
RA	15.9
ØB	6.3
C	2.4
Wt.	8g

E11/E13 Cable Stopper



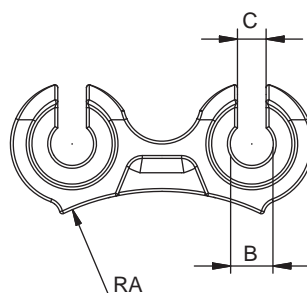
MODEL	E11	E13
RA	15	11
ØB	6.3	6.3
C	2.6	2.6
Wt.	10g	10g

E12/E14 Cable Stopper



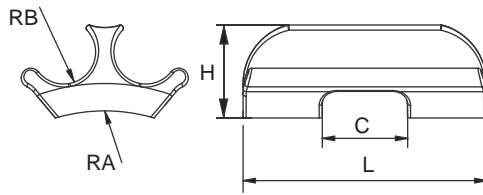
MODEL	E12	E14
RA	17.5	12
ØB	6.3	6.3
C	2.6	2.6
Wt.	10g	10g

E32 Cable Stopper



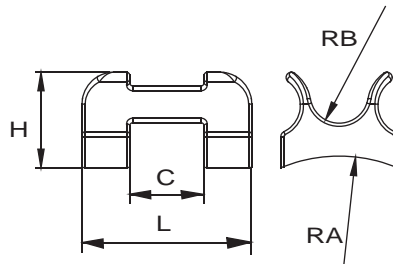
MODEL	E32
RA	16
B	6
C	2
Wt.	8g

E33 Cable Stopper



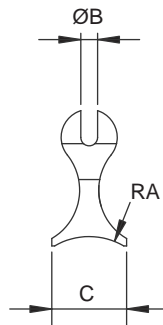
MODEL	E33
RA	14.3
RB	2x2.6
C	7.6
H	7.5
L	20
Wt.	5g

E48 Cable Stopper



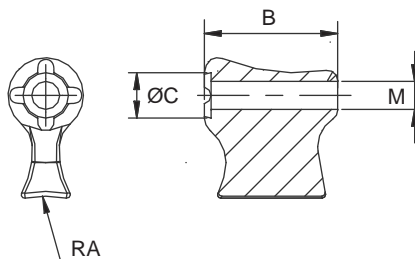
MODEL	E48
RA	14.3
RB	3x2.75
C	7
H	9
L	16
Wt.	3g

E05 Cable Stopper



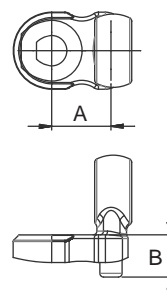
MODEL	E05
RA	11
ØB	2.7
C	12
Wt.	7g

E26 Cable Stopper



MODEL	E26
RA	15.9
B	20
ØC	6.8
M	M5X0.8
Wt.	8g

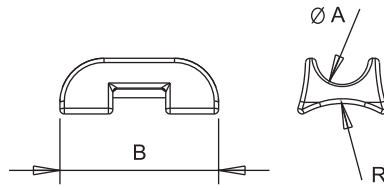
E37 Cable Stopper



MODEL	E37
A	8
B	5.8
Wt.	6g

TE01

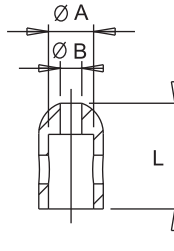
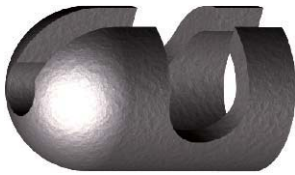
Cable Stopper



MODEL	TE01
Ø A	6
B	18
R	8.88
Wt.	2g

TE02

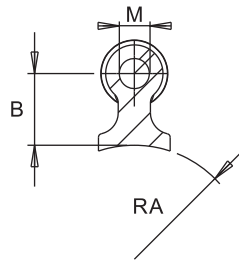
Cable Stopper



MODEL	TE02
Ø A	6.3
Ø B	3
L	14.7
Wt.	2g

TE03

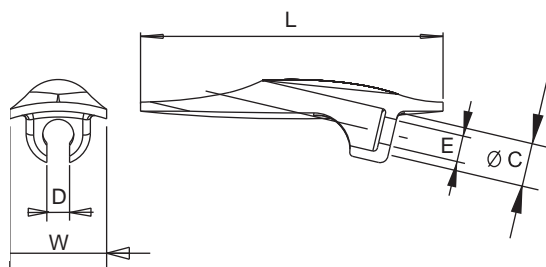
Cable Stopper



MODEL	TE03
RA	15.9
B	10
M	M5X0.8
Wt.	2g

TE04

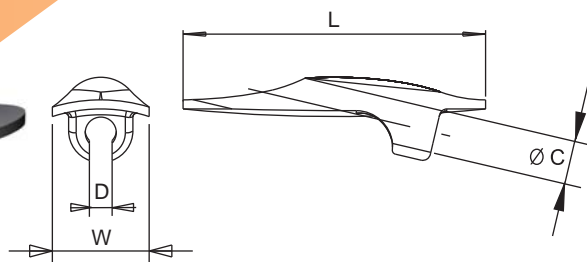
Cable Stopper



MODEL	TE04
Ø C	6
D	3
E	4.16
L	40
W	12.8
Wt.	6g

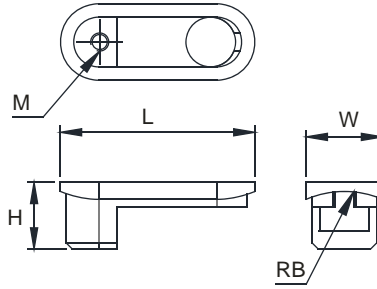
TE05

Cable Stopper



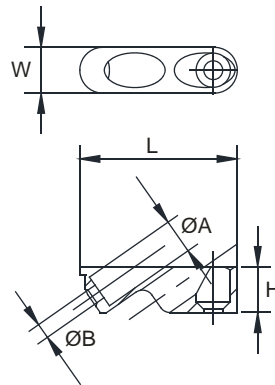
MODEL	TE05
Ø C	6
D	3
L	40
W	12.8
Wt.	6g

E60 Cable Stopper



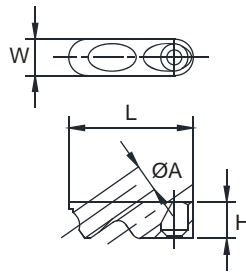
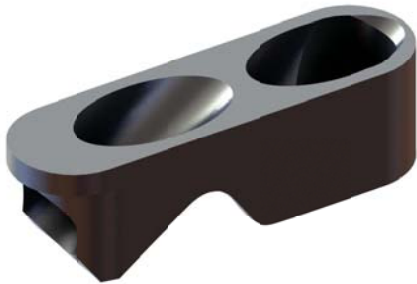
MODEL	E60
RB	15.9
H	11
L	32
M	M3X0.5
W	12.6
Wt.	4g

E61 Cable Stopper



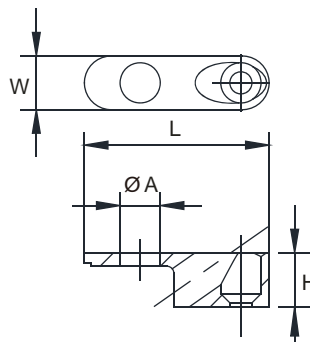
MODEL	E61
ØA	6.1
ØB	2.7
H	8
L	27.5
W	8
Wt.	2g
MATERIAL	AL

E62 Dropout Nut



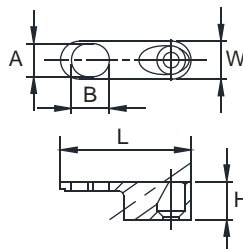
MODEL	E62
ØA	6.1
H	8
L	27.5
W	8
Wt.	2g
MATERIAL	AL

E63 Cable Stopper



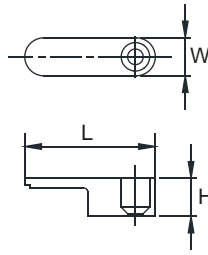
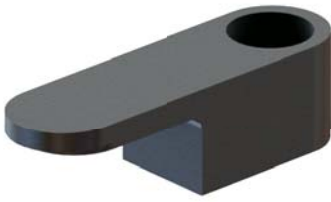
MODEL	E63
ØA	6
H	8
L	27.5
W	8
Wt.	2g
MATERIAL	AL

E64 Cable Stopper



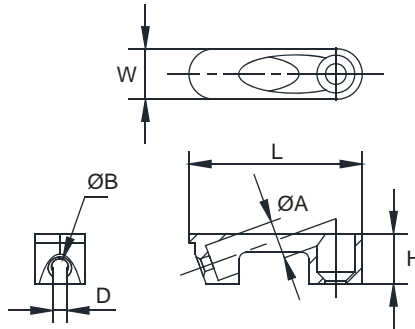
MODEL	E64
A	7
B	8
H	8
L	27.5
W	8
Wt.	2g
MATERIAL	AL

E65 Cable Stopper



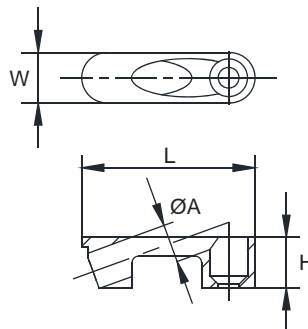
MODEL	E65
H	8
L	27.5
W	8
Wt.	2g
MATERIAL	AL

E66 Cable Stopper



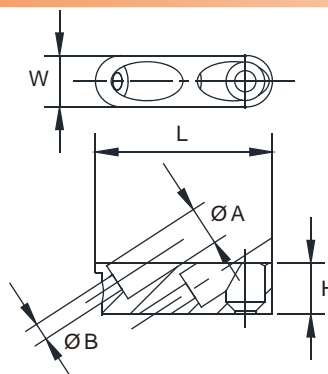
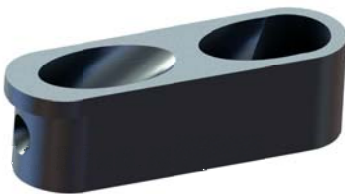
MODEL	E66
ØA	6.1
ØB	2.7
D	2.2
H	8
L	27.5
W	8
Wt.	2g
MATERIAL	AL

E67 Dropout Nut



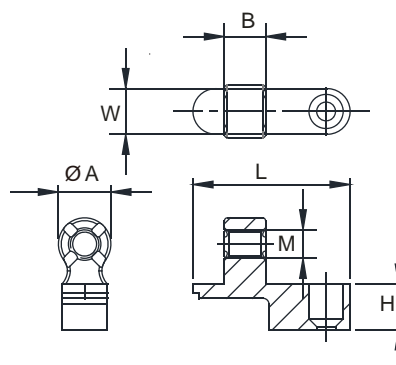
MODEL	E67
ØA	6.1
H	8
L	27.5
W	8
Wt.	2g
MATERIAL	AL

E68 Cable Stopper



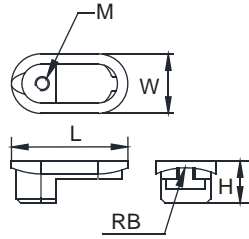
MODEL	E68
ØA	6.1
ØB	2.7
H	8
L	27.5
W	8
Wt.	2g
MATERIAL	AL

E69 Cable Stopper



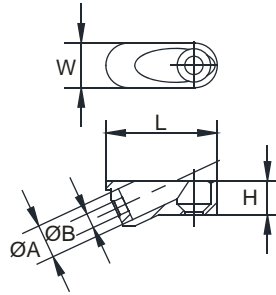
MODEL	E69
ØA	9.2
B	7.2
H	8
L	27.5
M	M5x0.8
W	8
Wt.	4g
MATERIAL	AL

E70 Cable Stopper



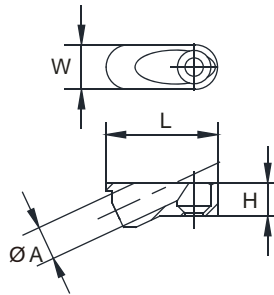
MODEL	E70
RB	15.9
H	9
L	24.6
M	M3X0.5
W	12.6
Wt.	4g

E71 Cable Stopper



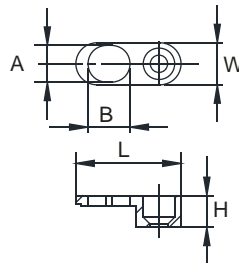
MODEL	E71
ØA	6.1
ØB	2.7
H	6
L	20
W	8
Wt.	2g
MATERIAL	AL

E72 Cable Stopper



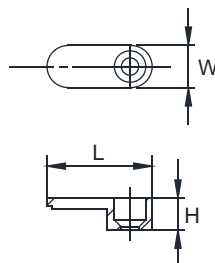
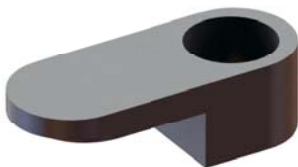
MODEL	E72
ØA	6.1
H	6
L	20
W	8
Wt.	2g
MATERIAL	AL

E74 Cable Stopper



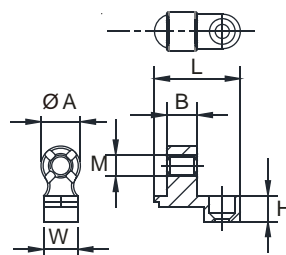
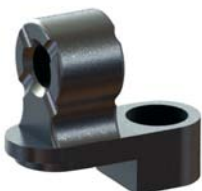
MODEL	E74
A	7
B	8
H	6
L	20
W	8
Wt.	2g
MATERIAL	AL

E75 Cable Stopper



MODEL	E75
H	6
L	20
W	8
Wt.	2g
MATERIAL	AL

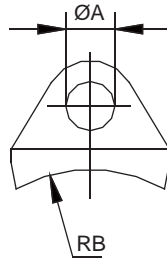
E76 Cable Stopper



MODEL	E76
ØA	9.2
B	7.2
H	6
L	20
M	M5x0.8
W	8
Wt.	4g
MATERIAL	AL

E15

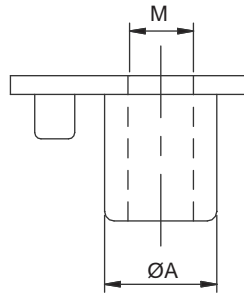
Cable Stopper



MODEL	E15
ØA	6.2
RB	16
Wt.	10g

E16

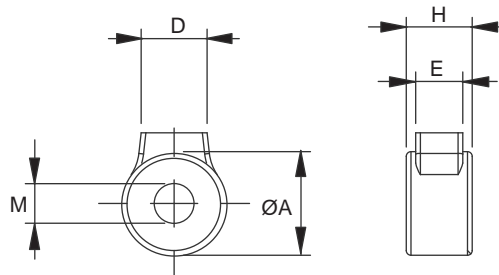
Cable Stopper



MODEL	E16
ØA	7.5
M	M5X0.8
Wt.	3g

E25

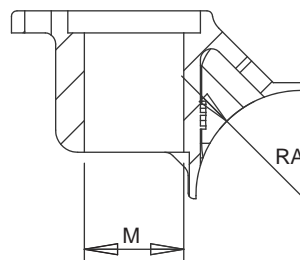
Dropout Nut



MODEL	E25
ØA	11
D	7
E	5
H	7
M	M5X0.8
Wt.	4g

E31

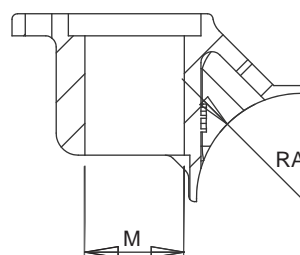
Cable Stopper



MODEL	E31
RA	9.525
M	M10X1.0
Wt.	12g

E81

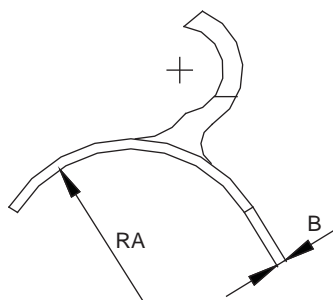
Cable Stopper



MODEL	E81
RA	14.3
M	M10X1.0
Wt.	12g

E04

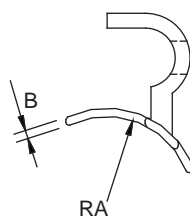
Boss Front Derailleur



MODEL	E04
RA	15.9
B	1.2
Wt.	19g

E08

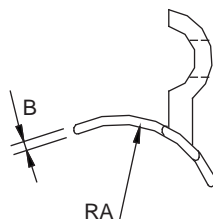
Boss Front Derailleur



MODEL	E08
RA	14.3
B	1.2
Wt.	8g

E09

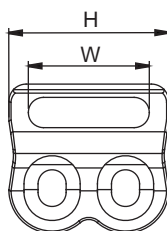
Boss Front Derailleur



MODEL	E09
RA	14.3
B	1.4
Wt.	7g

E24

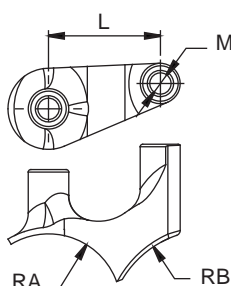
Boss Front Derailleur



MODEL	E24
H	37
W	28
Wt.	19g

E34

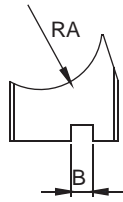
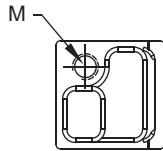
Boss Front Derailleur



MODEL	E34
RA	14.3
RB	20
L	22.1
M	2-M5X0.8
Wt.	18g

E35

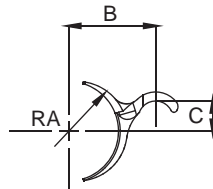
Boss Front Derailleur



MODEL	E35
RA	14.3
B	5.2
M	M6X1.0
Wt.	41g

E40/E41

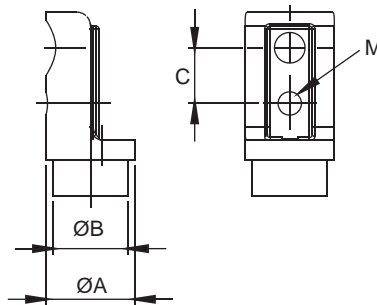
Boss Front Derailleur



MODEL	E40	E41-1	E41-2
RA	14.3	14.3	15.9
B	25	25	25
C	8.7	8.7	8.7
L	16	20	20
Wt.	14g	16g	16g

E38

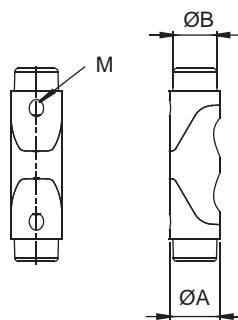
Couple Nut



MODEL	E38-1	E38-2
ØA	16	19
ØB	13.5	16.6
C	10	10
M	M5X0.8	M5X0.8
Wt.	43g	63g

E47

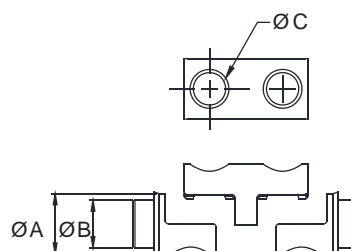
Couple Nut



MODEL	E47
ØA	14.75
ØB	12.8
M	M5X0.8
Wt.	78g

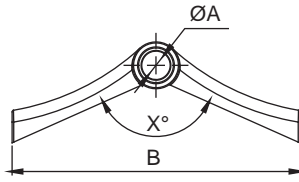
E49

Couple Nut



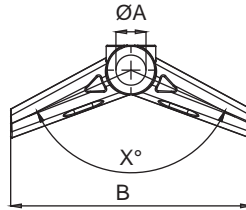
MODEL	E49
ØA	19
ØB	15
ØC	10
Wt.	78g/29g
MATERIAL	CRMO/AL

E21 Brake Bridge



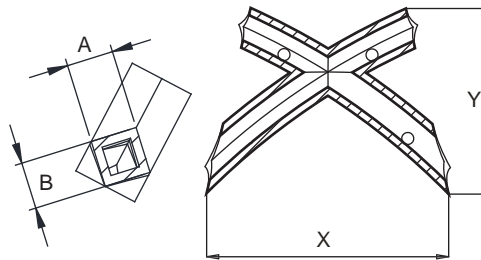
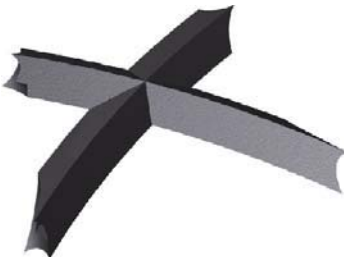
MODEL	E21-1	E21-2
$\varnothing A$	8.5	8.5
B	72	86
X°	132°	132°
Wt.	30g	31g

E22 Brake Bridge



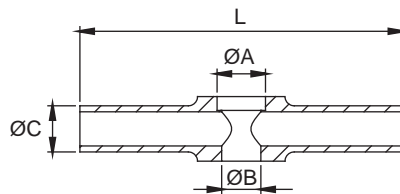
MODEL	E22
$\varnothing A$	8.5
B	68
X°	132°
Wt.	31g

E27 Brake Bridge



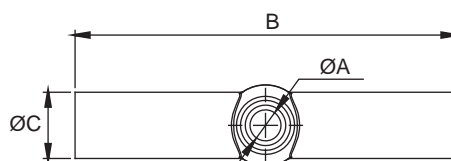
MODEL	E27-1	E27-2
A	7.1	7.1
B	7.1	7.1
X	72	60.5
Y	59	46.4
Wt.	36g	24g

E28 Brake Bridge



MODEL	E28
$\varnothing A$	10.5
$\varnothing B$	8.5
$\varnothing C$	10
L	70
Wt.	25g

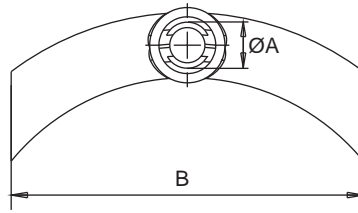
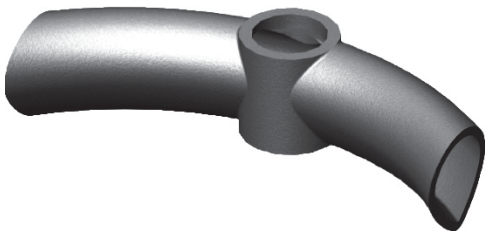
E29 Brake Bridge



MODEL	E29
$\varnothing A$	8.5
B	80
$\varnothing C$	13.9
Wt.	33g

E30

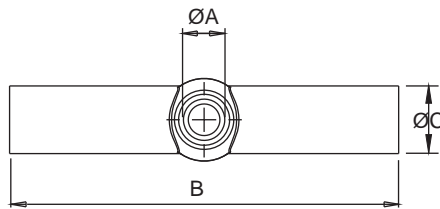
Brake Bridge



MODEL	E30
$\varnothing A$	8.5
B	65
Wt.	29g

E42

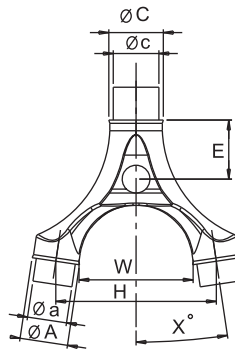
Brake Bridge



MODEL	E42
$\varnothing A$	8.5
B	80
$\varnothing C$	11.2
Wt.	29g

E232/E233

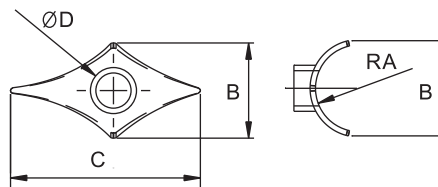
Brake Bridge



MODEL	E232	E233
$\varnothing A$	14	18
$\varnothing a$	12	16
$\varnothing C$	16	22.6
$\varnothing c$	13.9	20
E	18	28
H	48.9	50.8
W	34.7	34.7
X°	8.5°	8.5°
Wt.	66g	103g

E36

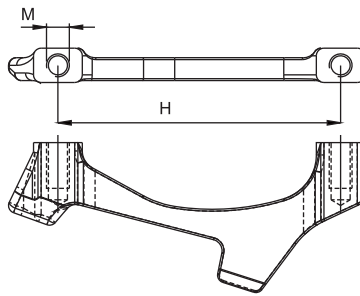
Brake Bridge



MODEL	E36
RA	8
B	17.6
C	35
$\varnothing D$	8.5
Wt.	2g

E43

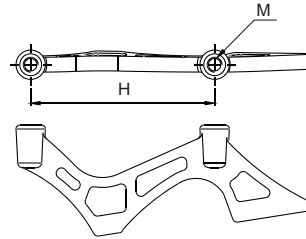
Front Disk Brake



MODEL	E43
H	74.2
M	2-M6X1.0
Wt.	66g
MATERIAL	CRMO/AL

E45

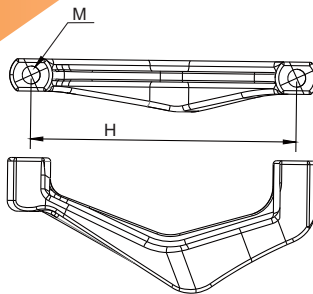
Front Disk Brake



MODEL	E45
H	74.2
M	2-M6X1.0
Wt.	96g

E44

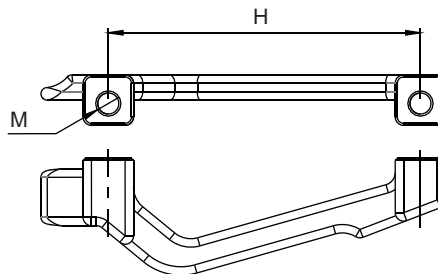
Rear Disk Brake



MODEL	E44
H	74.2
M	2-M6X1.0
Wt.	82g

E46

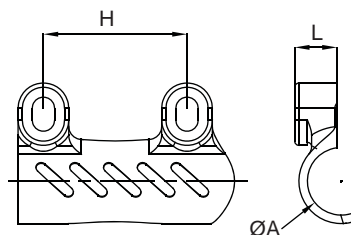
Rear Disk Brake



MODEL	E46
H	74.2
M	2-M6X1.0
Wt.	60g

E51/E52

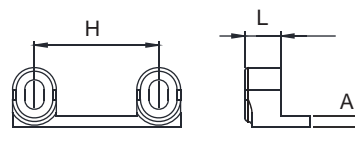
Rear Disk Brake



MODEL	E51	E52
ØA	14	16
L	15	15
H	34	34
Wt.	33g	36g

E53

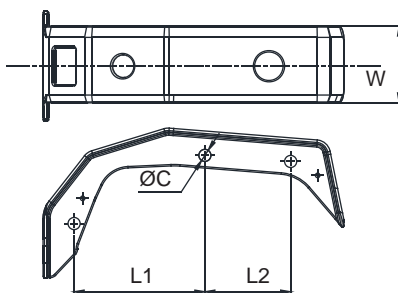
Rear Disk Brake



MODEL	E53
A	3
L	10
H	34
Wt.	31g

E50

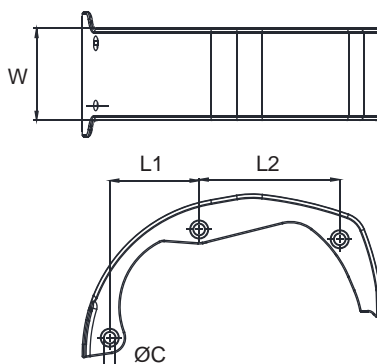
Cover



MODEL	E50
ØC	8.5
L1	91.8
L2	60.2
W	54
Wt.	526g
for	E-6000

E55

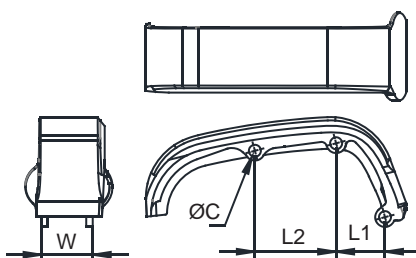
Cover



MODEL	E55
ØC	8.5
L1	69
L2	108.4
W	71
Wt.	1047g
for	E-8000/E6100

E56

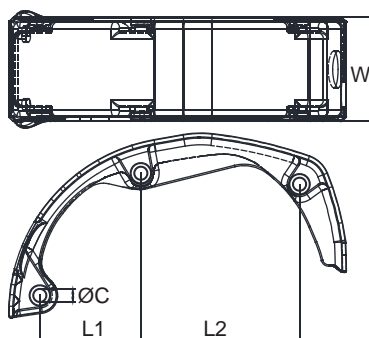
Cover



MODEL	E56
ØC	10
L1	25.79
L2	73.86
W	47
Wt.	832g
for	MAX01

E57

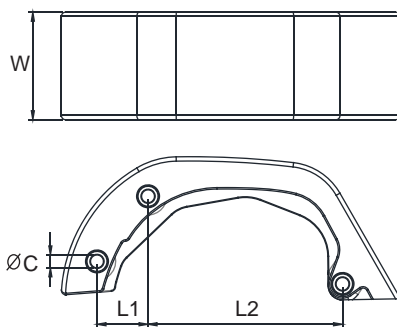
Cover



MODEL	E57
ØC	8.5
L1	69
L2	108.4
W	71
Wt.	932g
for	E-5000

E58

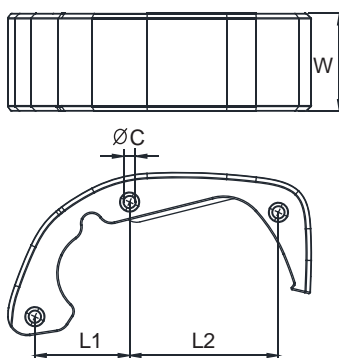
Cover



MODEL	E58
ØC	9
L1	35.61
L2	135.59
W	75
Wt.	1093g
for	BOSCH4

E80

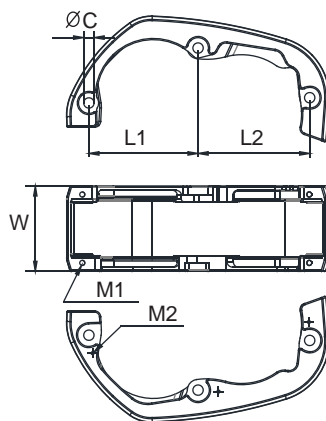
Cover



MODEL	E80
ØC	8.5
L1	69
L2	108.4
W	71
Wt.	1176g
for	DUEP-800

E82

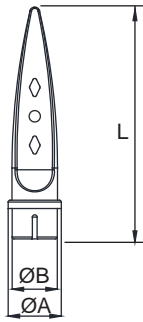
Cover



MODEL	E82
ØC	8.5
M1	4-M5X0.8X10L
M2	3-M3X0.5X8L
L1	89.37
L2	91.35
W	70
Wt.	1220g
for	M410/510

Q120/Q121

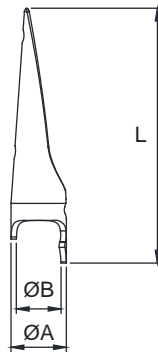
Seat Stay Tip



MODEL	Q120	Q121
ØA	14	16
ØB	12	14
L	61	61
Wt.	20g	21g

Q126/Q127

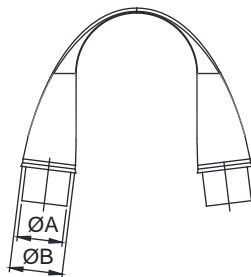
Seat Stay Tip



MODEL	Q126	Q127
ØA	13	15
ØB	10.5	12.5
L	60	60
Wt.	11g	12g

Q140

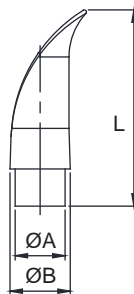
Seat Stay Tip



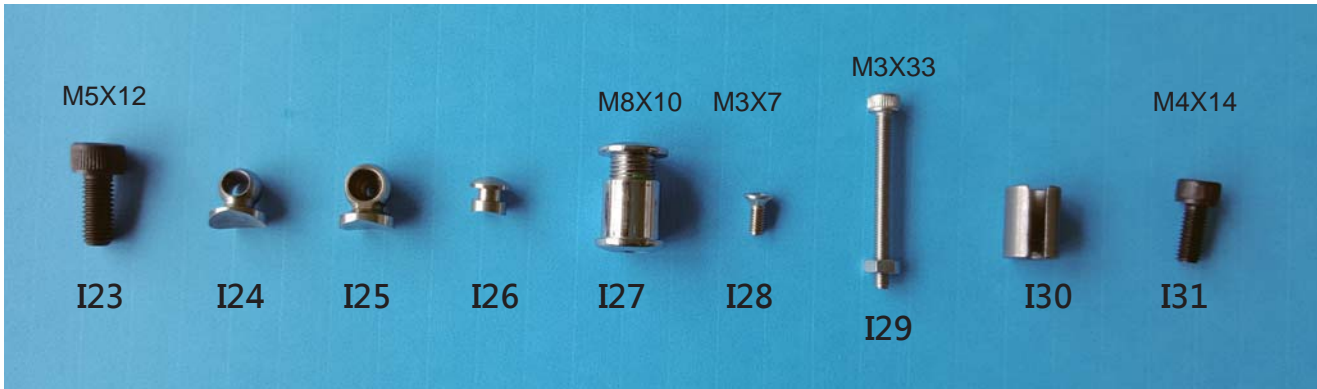
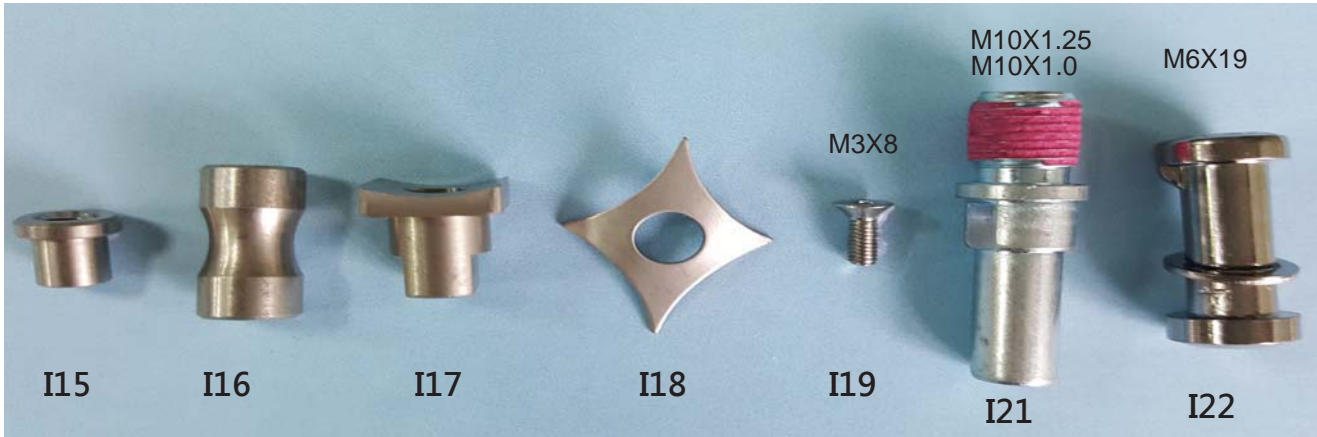
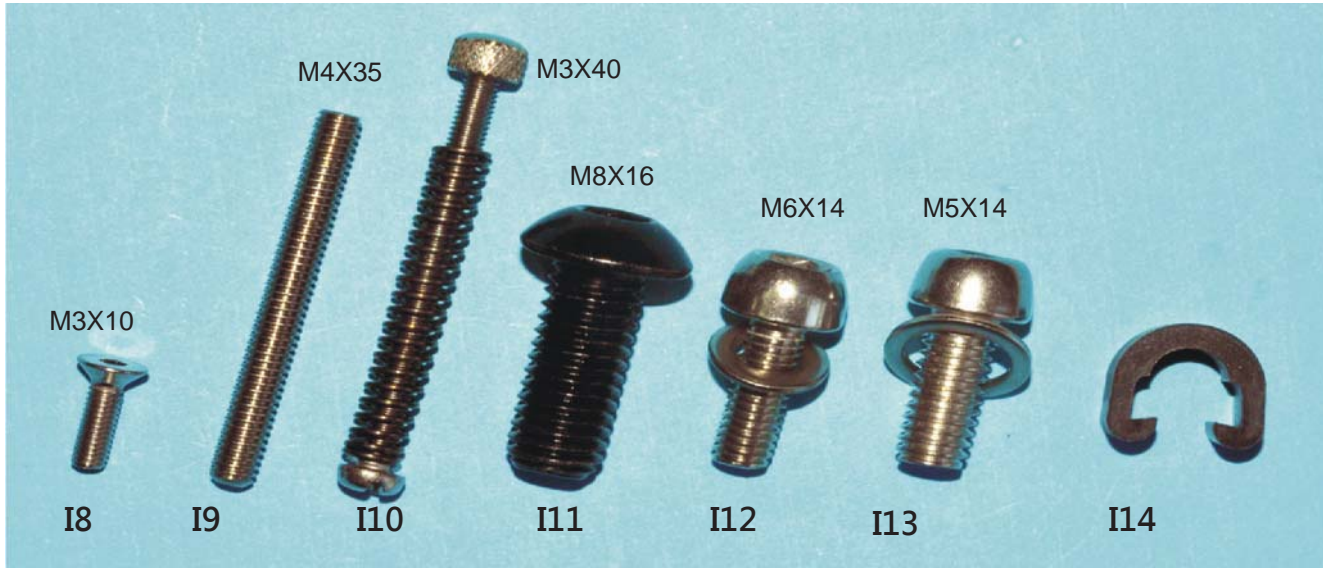
MODEL	Q140
ØA	12
ØB	14
Wt.	40g

Q210/Q220

Seat Stay Tip



MODEL	Q210	Q220
ØA	12	14
ØB	14	16
L	48	48
Wt.	20g	20g





No.81, Lane 166, Xiquan Rd.,
Shengang Township, Changhua county (50951), Taiwan.
TEL: +886-4-7987686 FAX:+ 886-4-7985786
Email:allotec@allotec.com.tw