
SILVA
**PASSAGUAINA - PASSACAVI - RINFORZI - SUPPORTI
 CABLE GUIDE - CABLE TUNNEL - REINFORCEMENT - SUPPORTS
 HUELLENFUEHRUNG - KABELFUEHRUNG - VERSTAERKUNG - HALTER**

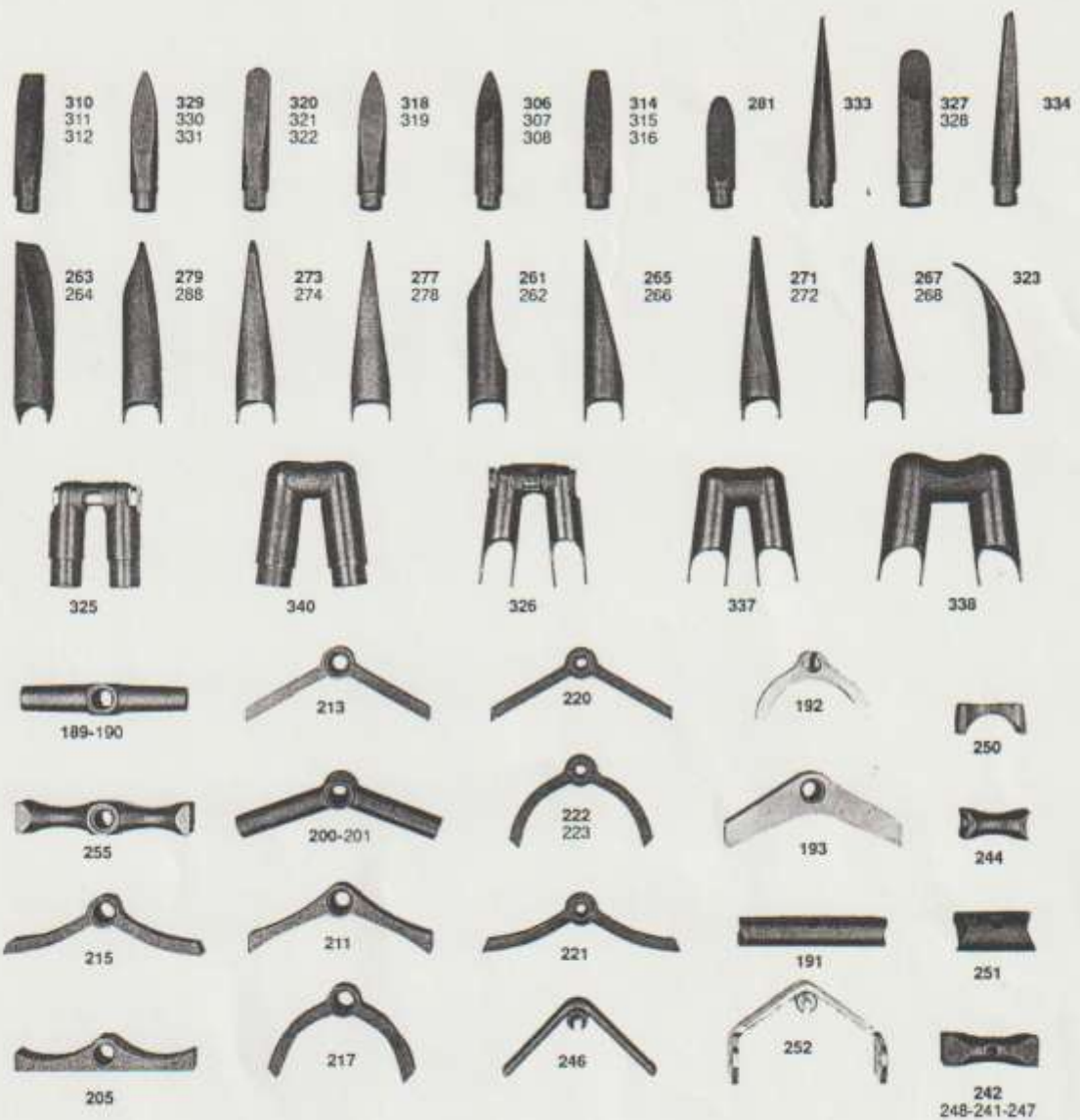
- art. 101 - 102 - 103 - 104 \varnothing 5,7;
- art. 105 \varnothing 9 x 6,5 x 11-2;
- art. 106 \varnothing 8 x 5,5 x 5,5;
- art. 107 \varnothing 6 x 4 L14;
- art. 108 \varnothing 7 x 5 L24;
- art. 109 \varnothing 9 x 6,5 x 11,3;
- art. 110 \varnothing 8 x 5,5/2,5;
- art. 111 \varnothing 8 x 6 x 11-2;
- art. 113 \varnothing 8 x 6 x 11-3;
- art. 114 \varnothing 8 x 5,5 x 5,5;
- art. 115 \varnothing 9,7 x 7 x 5,5;
- art. 116 \varnothing 8 x 6 x 11-3;
- art. 118 \varnothing 8 x 6 x 11;
- art. 119 \varnothing 6,5 x 4,7 x 8-2;
- art. 120 \varnothing 8 x 6,5/4,5;
- art. 121 AL \varnothing 7 x 5,3/2,7;
- art. 122 AL \varnothing 5,7/3,5;
- art. 123 AL \varnothing 5,7/2,7;
- art. 124 AL \varnothing 5,7;
- art. 125 \varnothing 8 x 6 x 11-3;
- art. 126 \varnothing 8 x 6 x 11-2;
- art. 127 \varnothing 8 x 6 x 11-2;
- art. 137 \varnothing 7 x 6 x 500;
- art. 139 AL \varnothing 5,5;
- art. 140 L27;
- art. 141 \varnothing 7;

- art. 142 \varnothing 5,5;
- art. 143 \varnothing 4,5 x 2,5 x 25;
- art. 144 \varnothing 6 x 4 x 33;
- art. 146 \varnothing 6 x 4 x 55;
- art. 150 n. 2-art. 368 + n. 1 art. 157;
- art. 151 \varnothing 7 x 3,8;
- art. 152 \varnothing 8 x 5/2;
- art. 153 \varnothing 6/5,8 x 4 x 33;
- art. 154 \varnothing 6/5,8 x 4 x 55;
- art. 155 \varnothing 6 x 4/2;
- art. 156 \varnothing 4 x 2 x 70;
- art. 157 \varnothing 4 x 3 x 500;
- art. 161 \varnothing 6 x 5/2;
- art. 285 AL 5MA;
- art. 286 \varnothing 5 x 15 r 14,5;
- art. 287 \varnothing 7 x 6,4 r 18;
- art. 288 \square 12 x 12 x M5;
- art. 289 L10 x 2 x M5;
- art. 290 \varnothing 5,5 x 16 r 14,5 2 x \varnothing 3;
- art. 291 \varnothing 5 x 15 r 14,5;
- art. 292 \varnothing 9 x 14 M5 r 13;
- art. 293 \varnothing 12 x M5 x 19 r 13;
- art. 294 \varnothing 12 x M5 x 15 r 7;
- art. 296 \square 12 x 12 \varnothing 9 x 9,5 r 14,5;
- art. 297 \varnothing 7,5 x 5,9 r 16;
- art. 298 \varnothing 7,5 x 50 \square 12 x 12;

- art. 299 \varnothing 5 x 19 r 14,5 AL
- art. 300 \varnothing 7,3 x 5,4 x 3;
- art. 301 \varnothing 8 x M6 x 35 r 9;
- art. 302 set r 8 M5;
- art. 305 \varnothing 8 x M6 x 35 r 9;
- art. 358 \varnothing 16 x 8 x 18 r 16;
- art. 359 \varnothing 20 x 6 x 28 r 16;
- art. 361 L20 x 14 \varnothing 6 r 14;
- art. 362 L39 x 13 \varnothing 8 r 7,5;
- art. 363 L26 x \varnothing 12 x 10,3 M5 x 9;
- art. 364 L55 r 15;
- art. 365 \varnothing 12 x 8,5 x 19,5;
- art. 366 \varnothing 14 x 8,5 x 25 r 16;
- art. 367 L29,5 x 15 r 14 \varnothing 6;
- art. 368 \varnothing 7 x 6/4 x 35;
- art. 369 L31,5 x 17 r 13 \varnothing 19 x 7,5;
- art. 449 \square 13 x 24 \varnothing 8,5 r 16;
- art. 471 \varnothing 8 x 6 M5;
- art. 472 \varnothing 10 x 7 M5;
- art. 474 \varnothing 8 x 6 M5;
- art. 475 \varnothing 10 x 6 M5;
- art. 476 \varnothing 10 x 6 M5;
- art. 477 \varnothing 7 x 6 M5;
- art. 567 \square 13 x 35 x \varnothing 8,5 r 16;
- art. 589 \varnothing 25 x 5.



SILVA



**PENDINE E PONTICELLI
TOP EYES AND CHAIN STAY BRIDGES
SPITZEN UND BREMSSTEG**

PENDINE INTERNE ED ESTERNE - INTERNAL AND EXTERNAL TOP EYES - INTERN UND EXTERN SPITZEN

art. 261 \varnothing 11,5; art. 262 \varnothing 14 (dx o sx - r, or l.); art. 263 \varnothing 11,5; art. 264 \varnothing 14; art. 265 \varnothing 11,5; art. 266 \varnothing 14; art. 267 \varnothing 11,5; art. 268 \varnothing 14; art. 271 \varnothing 11,5; art. 272 \varnothing 14; art. 273 \varnothing 11,5; art. 274 \varnothing 14; art. 277 \varnothing 11,5; art. 278 \varnothing 14; art. 279 \varnothing 11,5; art. 280 \varnothing 14 (dx o sx - r, or l.); art. 281 \varnothing 11,5; art. 306 \varnothing 11,5; art. 307 \varnothing 14; art. 308 \varnothing 16 (dx o sx - r, or l.); art. 310 \varnothing 11,5; art. 311 \varnothing 14; art. 312 \varnothing 16; art. 314 \varnothing 11,5; art. 315 \varnothing 14; art. 316 \varnothing 16; art. 318 \varnothing 11,5; art. 319 \varnothing 14; art. 320 \varnothing 11,5; art. 321 \varnothing 14; art. 322 \varnothing 16; art. 323 \varnothing 14; art. 325 \varnothing 14 e art. 326 \varnothing 11,5 + art. 443 set pendine con bullone - set top eyes with bolt - satz Spitzen mit Klemmbolzen; art. 327 \varnothing 14; art. 328 \varnothing 16; art. 329 \varnothing 11,5; art. 330 \varnothing 14; art. 331 \varnothing 16 (dx o sx - r, or l.); art. 333 \varnothing 11,5; art. 334 \varnothing 11,5; art. 337 \varnothing 14; art. 338 \varnothing 16; art. 340 \varnothing 16.

PONTICELLI FRENO CORSA - RACE BRAKE BRIDGES - RENNREMSSTEG

art. 189 \square 14 x 14 x 65/70; art. 190 \square 13 x 13 x 65 ponticello quadro - square brake bridge - Kreuz Bremssteg; art. 192 12 x 45 ponticello AL - brake bridge AL - Bremsteg ALU; art. 193 15 x 70 ponticello AL - brake bridge AL - Bremsteg ALU; art. 200 \varnothing 14/10; art. 201 \varnothing 15/11 ponticello superleggero Genius - brake bridge superlight Genius - Bremssteg superleicht Genius; art. 205 \square 13 x 70; art. 211 13 x 72; art. 213 13 x 72; art. 215 13 x 72; art. 217 13 x 55; art. 255 \square 13 x 13 r 7,5

PONTICELLI INFERIORI CORSA - RACE CHAIN STAY BRIDGES - RENNKETTENSTEG

art. 244 \square 12 x 12 24,5/26/27,5 r 11; art. 250 \square 12 x 12 x 26/29

PONTICELLI FRENO MTB - MTB BRAKE BRIDGE - MTB KETTENSTEG

art. 191 \varnothing 12/9 6M ponticello K - brake bridge K - Bremssteg K; art. 220 7 x 72; art. 221 7 x 72; art. 222 7 x 75; art. 223 7 x 55 6MA; art. 246 L10 x 60; art. 252 L60

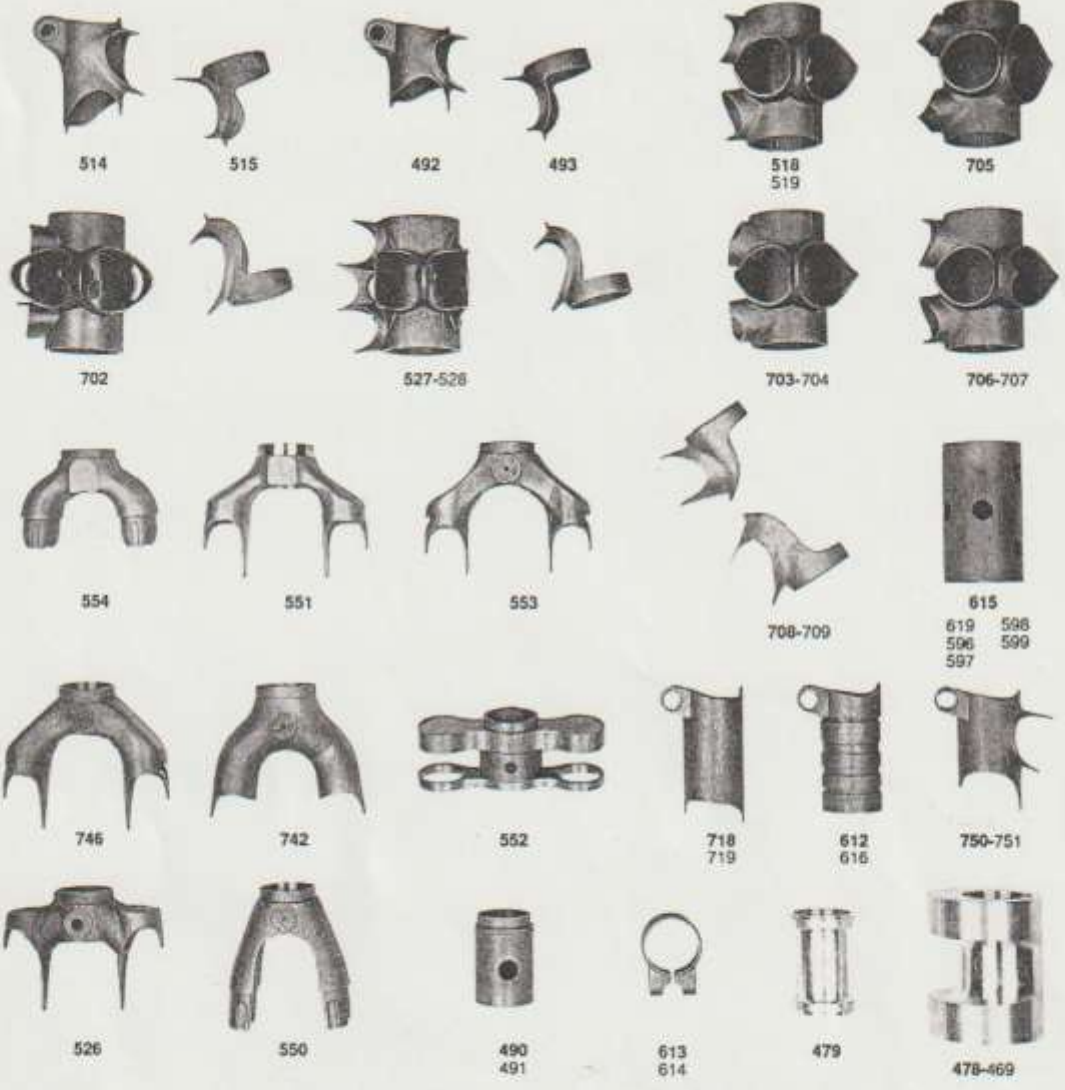
PONTICELLI INFERIORI MTB - MTB CHAIN STAY BRIDGES - MTB KREUZSTEG

art. 241 \square 12 x 12 x 37; art. 247 \square 12 x 12 x 41; art. 242 \square 12 x 12 x 37 \varnothing 5M; art. 248 \square 12 x 12 x 41 \varnothing 5M; art. 251 \varnothing 16 x 31 r 11 \varnothing 5

Il ponticello art. 255 viene fornito nelle misure da 39 a 67 (1 mm per misura). Il ponticello art. 211 viene fornito fresato solo su richiesta a r 7,5.
Our brake bridge art. 255 is supplied in the measures from 39 to 67 (1 mm each measure); Our brake bridge art. 211 is supplied milled only by request at r 7,5.
Unser Bremssteg art. 255 wird in den Grössen von 39 bis 67 mm (in 1 mm Abstufung) gefertigt; Unser Bremssteg art. 211 wird auf Bestellung angefertigt r 7,5.

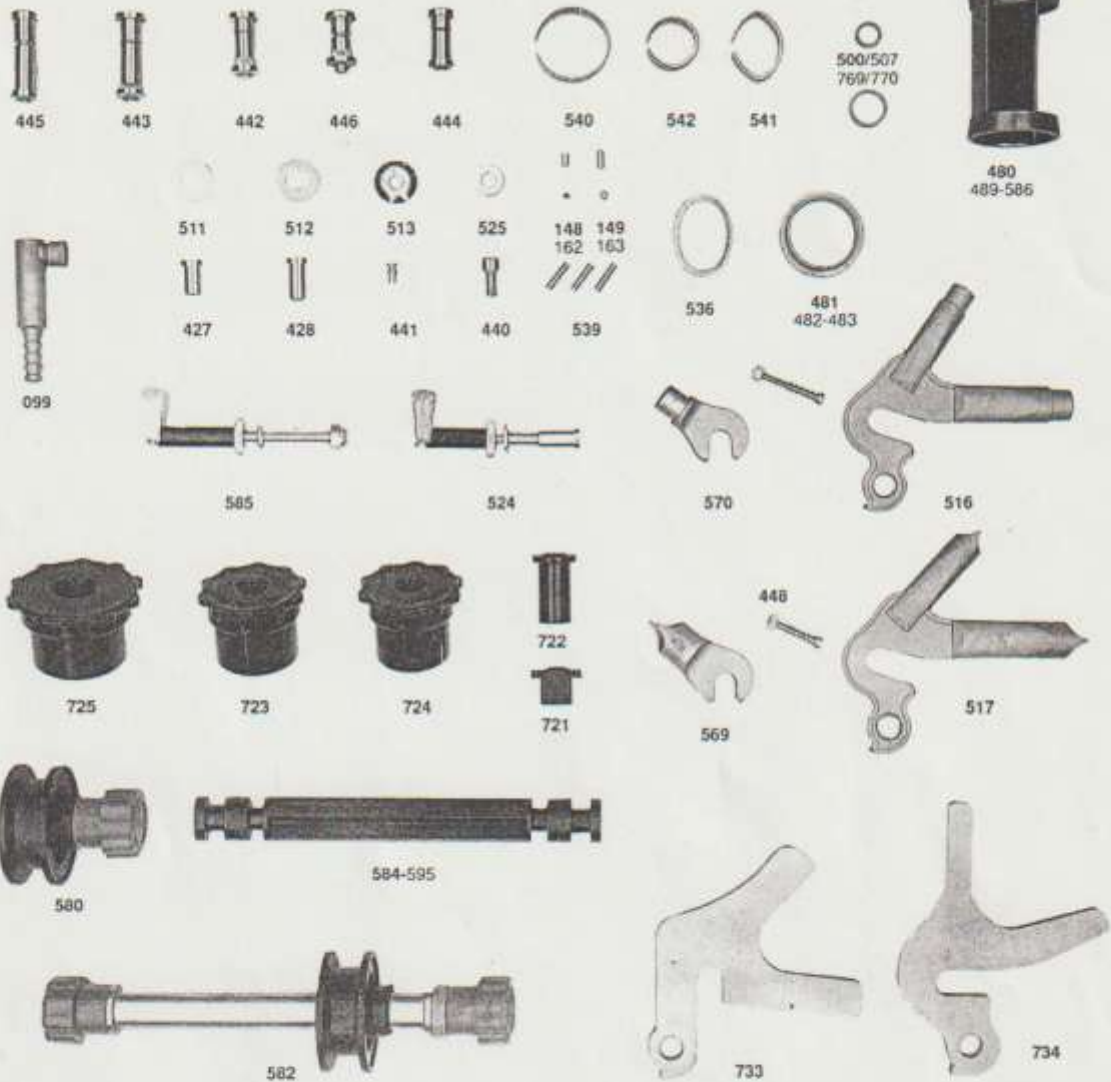


SILVA



TESTE FORCELLA - SCATOLE MOVIMENTO - CONGIUNZIONI
FORK CROWN - BOTTOM BRACKET SHELL - LUGS
ABELKOPF - TRETLAGERGEHAEUSE - MUFFEN

art. 478 eccentrico AL IT - eccentric for IT tandem - excentereteil fuer Tandem IT; art. 489 per tandem BSA; art. 479 bussola AL per scat. mov. - AL bottom bracket bush - Tretlagerbuchse alu; art. 490 \varnothing 25,4 bussola rinforzo T/F unicrown - reinforced bush for unicrown - Verstaerkbuchse fuer unicrown; art. 491 per unicrown \varnothing 28,6; art. 492 \varnothing 28,6 x 25,4 (72° 30') risella Silva microf. - seat lug Silva cast - Sattelmuffe Silva Mikrofusion; art. 493 sup. \varnothing 31,7 x 25,4 (72° 30') - inf. \varnothing 31,7 x 28,6 (60°) set cong. sterzo microf. Silva - set head lugs Silva cast - Satz Steuerrohrmuffen Mikrofusion Silva; art. 514 \varnothing 28,6 x 28,6 risella microf. seal lug cast - Sattelmuffe Mikrofusion; art. 515 sup. \varnothing 31,7 x 28,6 - inf. \varnothing 31,7 x 31,7 set cong. sterzo microf. - set head lugs cast - Satz Steuerrohrmuffen Mikrofusion; art. 518 \varnothing 31,7 x 28,6 (61°) x 22,2 (63°) scat. mov. it. stampata - bottom bracket shell IT pressed - Tretlager gehaeuse IT gestanzt; art. 519 BSA; art. 526 testa forcella B - fork crown B - Gabelkopf B; art. 527 \varnothing 28,6 x 28,6 (60° 30') x 22,2 (62° 30') scat. mov. microf. Silva IT - BBS Silva cast IT - Tretlager gehaeuse IT Mikrofusion; art. 528 BSA; art. 550 testa forcella S1 - fork crown S1 - Gabelkopf S1; art. 551 testa forcella S5 - fork crown S5 - Gabelkopf S5; art. 552 testa forcella Tandem S3 - fork crown Tandem S3 - Gabelkopf Tandem S3; art. 553 testa forcella S4 - fork crown S4 - Gabelkopf S4; art. 554 testa forcella S6 - fork crown S6 - Gabelkopf S6; art. 612 collarino interno per canotto \varnothing 27,2 - inner collar for seat tube \varnothing 27,2 - Verstaerkungsschelle fuer Sattelrohre \varnothing 27,2; art. 616 per canotto \varnothing 29,4 - for seat tube \varnothing 29,4 - fuer Sattelrohre \varnothing 29,4; art. 613 \varnothing 31/28,7 x 15 collarino con battuta - collar with rabbet - Verstaerkung mit Anschlag; art. 614 \varnothing 31,7/29,6 x 14,5 senza battuta - w/o rabbet - ohne Anschlag; art. 615 bussola IT con fori - bush IT with holes - Buchse IT mit Löcher; art. 619 bussola BSA con fori - bush BSA with holes - Buchse BSA mit Löcher; art. 596 bussola IT senza fori - bush IT w/o holes - Buchse IT ohne Löcher; art. 597 bussola BSA senza fori - bush BSA w/o holes - Buchse BSA ohne Löcher; art. 598 bussola AL IT senza fori - AL bush IT w/o holes - Buchse AL IT ohne Löcher; art. 599 bussola AL BSA senza fori - AL bush BSA w/o holes - Buchse AL BSA ohne Löcher; art. 702 \varnothing 31,7 x 28,6 (60° 30') x [30 x 17] (62° 30') scat. mov. O.S. I microf. - bottom bracket shell O.S. cast IT - Tretlagergehäuse O.S. Mikrofusion IT; art. 703 \varnothing 31,7 x 28,6 (60°) x [29,5 x 18] (64°) scat. Thron IT - BBS Thron IT - Tretlagergehäuse Thron IT; art. 704 Thron BSA; art. 705 \varnothing [26 x 37] x 28,6 (62°) x [18 x 26] (63°) scat. mov. Minimax BSA - BBS Minimax BSA - Tretlagergehäuse Minimax BSA; art. 706 \varnothing 28,6 x 28,6 (61°) x 22,2 (61°) scat. mov. corsa IT - BBS racing IT - Tretlagergehäuse IT; art. 707 BSA; art. 708 sup. \varnothing 31,7 x 25,4 (72°) inf. \varnothing 31,7 x 28,6 (60°); art. 709 sup. \varnothing 31,7 x 31,7 (72°) inf. \varnothing 31,7 x 28,6 (60°) set cong. sterzo lastra - set head lugs pressed - Satz Steuerrohrmuffen gestanzt; art. 718 \varnothing 28,6 x 31 collarino esterno - external collar - Verstaerkung extern; art. 719 \varnothing 28,6 x 30; art. 750 \varnothing 28,6 x 25,4 (72°) risella con art. 449 - seat lug with art. 449 - Sattelmuffe mit art. 449; art. 751 \varnothing 28,6 x 28,6 (72°); art. 742 testa forcella S10 - fork crown S10 - Gabelkopf S10; art. 746 testa forcella per fori diritti - fork crown straight blades - Gabelkopf fuer gerade Gabelschneiden.


MATERIALI VARI
SUNDRY ARTICLES
VERSCHIEDENE ARTIKEL

art. 099 raccordo pompa - pump connector - Pumpenadapter; art. 148 \varnothing 1,6 x 5; art. 162 \varnothing 2 x 5; art. 149 \varnothing 1,6 x 7; art. 163 \varnothing 2 x 7 capofilo per corsa e mountain bike - race and MTB cable end - Kabelendöse; art. 427 mm. 13 brugola freno post. - allen key rear brake nut - Inbusmutter fuer hinten; art. 428 mm 16 brugola freno ant. - allen key front brake nut - Inbusmutter fuer Vorne; art. 440 vite per porta borraccia - bottle cage screw - Flaschenhalterschraube; art. 441 vite a tappo per art. 471 - plug screw for art. 471 - Blindschraube fuer art. 471; art. 442 \varnothing 12 x 26/19 bullone reggisella - seat pin bolt - Sattelklemmbolzen; art. 443 \varnothing 12 x 37/27 bullone reggisella - seat pin bolt - Sattelklemmbolzen; art. 444 \varnothing 10 x 23/17 bullone reggisella - seat pin bolt - Sattelklemmbolzen; art. 445 bullone per art. 567 - seat pin bolt for art. 567 - Sattelklemmbolzen fuer art. 567; art. 446 \varnothing 12 x 27/15 bullone foro passante - seat pin bolt holed - Sattelklemmbolzen mit Loch; art. 448 viti registro - adjusting screw - einstellung Schraube; art. 480 \varnothing 32; art. 489 \varnothing 36; art. 586 \varnothing 33 set anelli conici per sterzo - set conical rings for head tube - Satz kegelforming fuer Steuerrohre; art. 481 \varnothing 25,4; art. 482 \varnothing 1" 1/8; art. 483 \varnothing 1" 1/4 collanini rinforzo tubo forcella - fork tube collar re-inforcement - Verstaerkungshelle fuer Gabelrohre; art. 500 \varnothing 8,7; art. 501 \varnothing 9,7; art. 502 \varnothing 10,5; art. 503 \varnothing 10,7; art. 504 \varnothing 11,2; art. 505 \varnothing 11,8; art. 506 \varnothing 12,5; art. 507 \varnothing 14,2; art. 769 \varnothing 12,7; art. 770 \varnothing 13,8 anelli in filo di ottone per saldature - brass springs of brasing - Messingfeder fuer einloten; art. 511 - art. 512 ranelia Teflon - Teflon washer - Teflonscheibe; art. 513 ranelia galletto cambio - gear lever boss washer - Scheibe zur Schalthebenbefestigung; art. 516 forcellini posteriori - rear fork ends - hintere Ausfallenden; art. 517 forcellini posteriori - rear fork ends - hintere Ausfallenden; art. 524 - art. 585 sicurezza freno MTB - MTB safety brake - MTB Bremmschutz; art. 525 ranelia zigrinata - serrated washer - Zahnscheibe; art. 536 \varnothing 26 x 18 anello per saldature testa forcella - support for brasing fork blades - Loetring fuer Gabelkopf; art. 539 \varnothing 2,5 x 3 x 12 spine coniche per telai - conics frames pins - konisch Rahmen Stitt; art. 540 \varnothing 28,6 - art. 541 \varnothing 26 x 18 - art. 542 \varnothing 20 molle di ottone per brasature - brass springs for brasing - Messing Loetfeder; art. 569 art. 570 forcellini anteriori - front fork ends - vordere Ausfallenden; art. 580 reggicalena PVC - chain tensioner PVC - Kunststoffkettenhalter; art. 582 tendicalena con distanziale - chain tensioner with spacer - Kettenhalter mit Distanzstueck; art. 584 L. 105/126 art. 595 L. 105/130 distanziale doppio - double spacing bar - Doppeldistanzstueck; art. 721 - art. 725 lappi protezione verniciatura telai - protection plugs for frames varnishing - Pfropfen fuer Ramenschutz; art. 721 per attacco quadro - for gear lever boss - fuer Schalthebel; art. 722 per attacco freno MTB - for MTB brake support - fuer MTB Sockelbremsen; art. 723 \varnothing 30 set per tubo sterzo - set head tube - Satz fuer Steuerrohre; art. 724 \varnothing 27,2 per reggisella - for seat tube - fuer Sattelrohr; art. 725 per scat. mov. (IT o BSA) - for IT or BSA BBS - fuer Trellagergehause IT oder BSA; art. 733 forcellino mountain bike AL - MTB rear fork end AL - MTB hintere Ausfallenden ALU; art. 734 forcellino corsa AL - race rear fork end AL - hintere Ausfallenden ALU.