



**This document is brought to you by courtesy of  
the National Cycle Archive  
In partnership with the  
Veteran-Cycle Club**

---

**Please acknowledge the source if you refer to this material.**

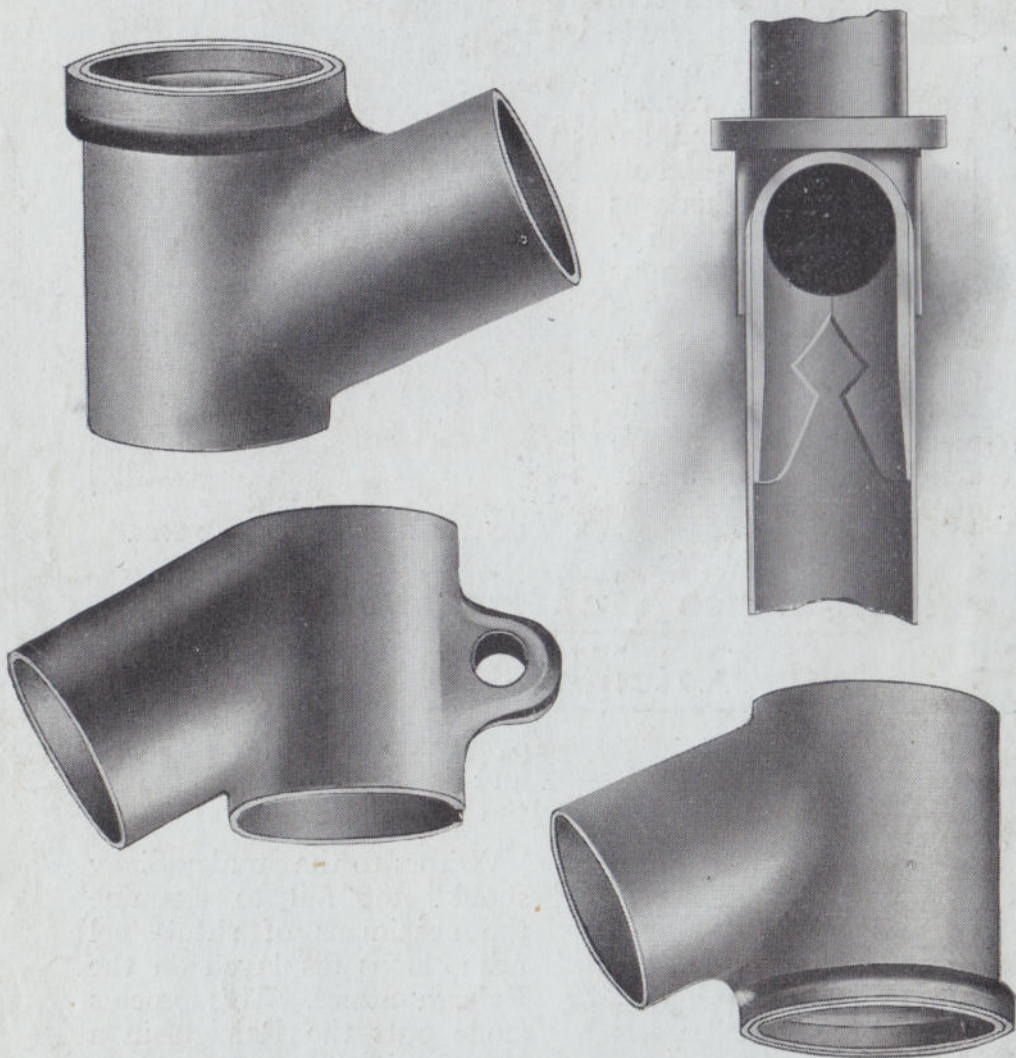
---

**Find out more about the National Cycle Archive [here](#)**



Specimens of Sheet Steel Frame Loops  
and Fork Crown as used on

— THE —  
**All-Steel RALEIGH**  
**CYCLE.**



— THE —  
**Raleigh Cycle Co., Ltd., Nottingham.**  
**AGENTS EVERYWHERE.**

**BUILT**  
**Entirely of**  
**STEEL**

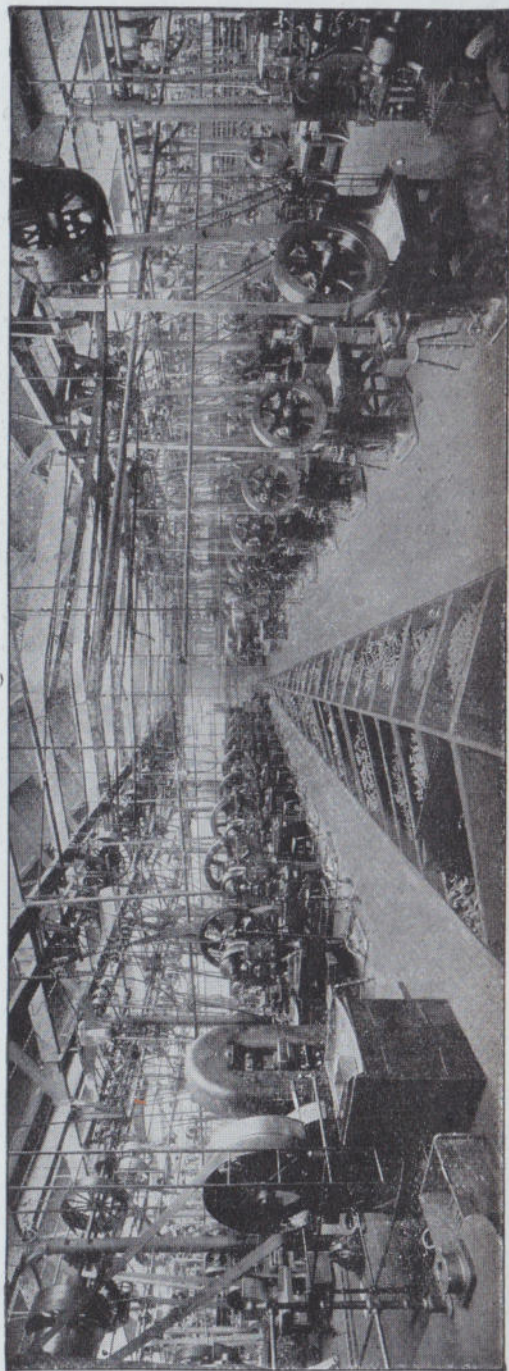
**RALEIGH**  
**CYCLES**

possess in addition to many notable characteristics which place them high above all rival makes, one unique advantage, viz., the means employed in the construction of their frames. The ordinary method embraces the use of old-fashioned, heavy and clumsy malleable iron castings (with, maybe, hidden flaws) for the crank bracket shell, head loops, and loops for other frame tubes, these being machined more or less accurately according to the quality of the bicycle. The Raleigh Company in order to adopt the

**Infinitely superior, light and**  
**Reliable Sheet Steel Pressing**

have installed a remarkable power press department, as shown in the accompanying illustration.

Here, a huge plant of massive and costly power presses of latest design is at work fashioning with marvellous accuracy



POWER PRESS DEPARTMENT IN THE RALEIGH WORKS.

“blanks” of the highest quality cold rolled steel into the necessary shape. ————— There is

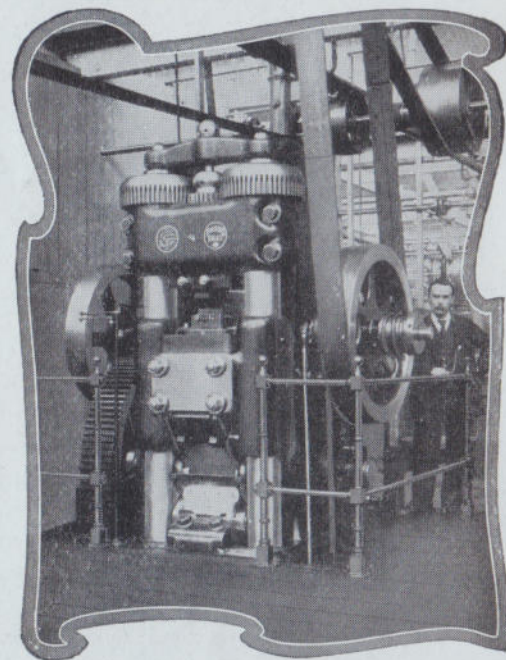
## A Leviathan POWER PRESS

specially made to our order here, which will give a squeeze

# 750 TONS

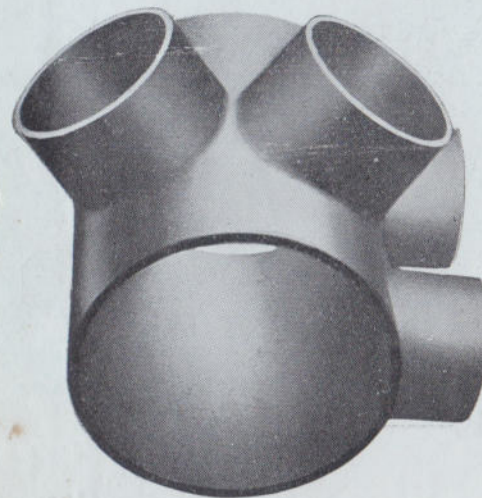
to the inch, and which at the time it was installed was the largest of its kind ever constructed.

**S**OME of the work is so intricate and so beautifully carried out that it seems almost impossible that it could have been made from a single sheet of steel. For example, the crank bracket, which is illustrated below. It seems difficult to believe that this was first of all a flat disc. The many and various operations through which it has to go are the result of thousands of costly and ingenious experiments, and the complete article is a triumphant demonstration of the



A LEVIATHAN POWER PRESS 750 TONS.

### Immense Superiority of the Raleigh Method



over that ordinarily employed, and is absolutely unique in the cycle industry.

Visitors to the Stanley Show should not fail to examine the specimens of sheet-steel frame loops displayed on the Raleigh Stand. This process alone puts the Raleigh in a class by itself ;

**It has no Imitator.**

Every cyclist who wants the best should buy the all-steel “Raleigh.”