

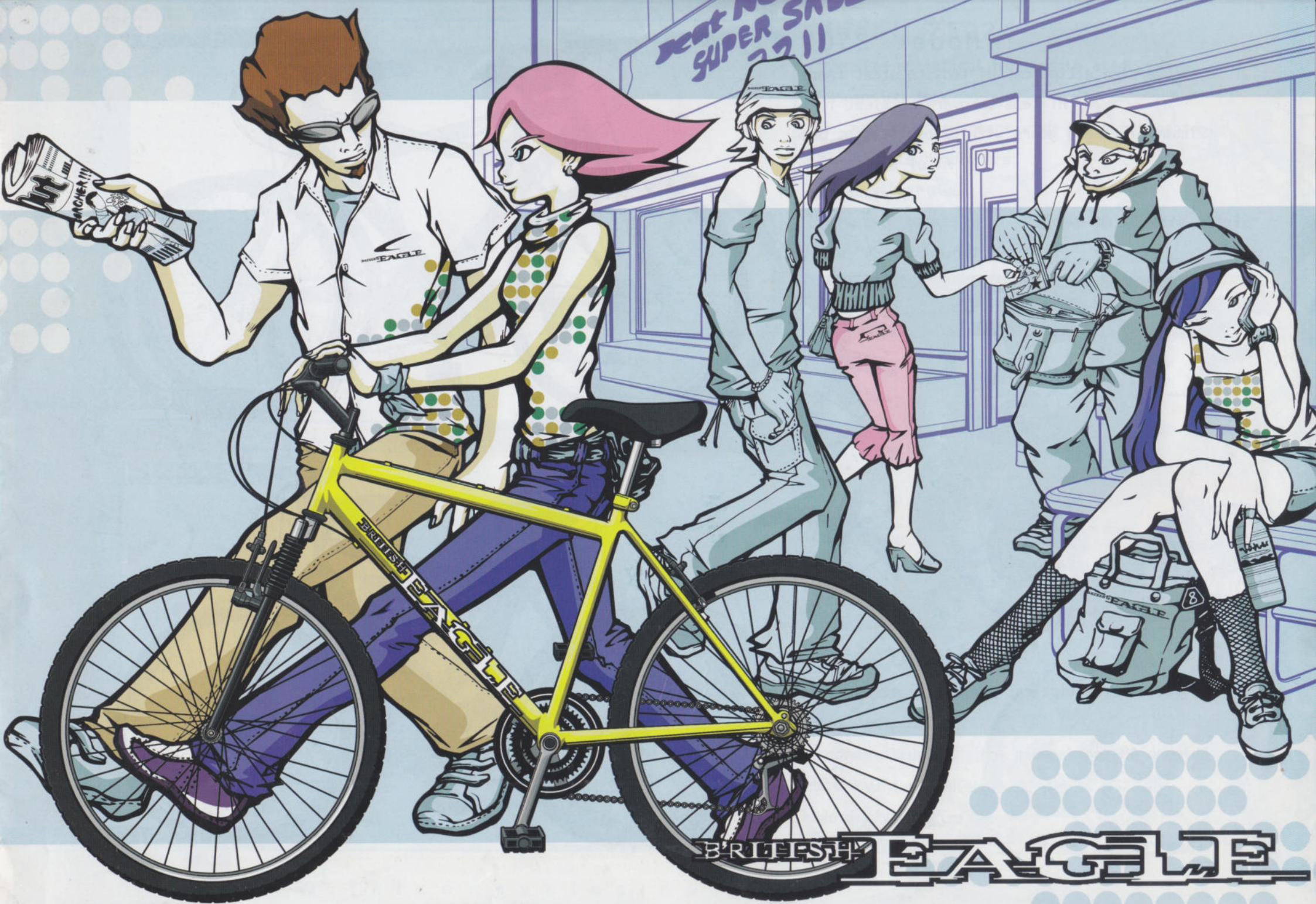


**This document is brought to you by courtesy of
the National Cycle Archive
In partnership with the
Veteran-Cycle Club**

Please acknowledge the source if you refer to this material.

Find out more about the National Cycle Archive [here](#)





DEPT. NO. 2211
SUPER SHOP

BRITISH EAGLE

和

Model 2500

Oversize elliptical Hi tensile steel frame

Hi tensile oversize steel fork

Shimano 18 speed gears with gripshift controls

Alloy silver rims

'V' style brakes

Frame size 16" 19" 22"

also available Boys 24" wheel



STORM



禾

Model 2501

Oversize elliptical Hi tensile steel frame

Suspension fork

Shimano 18 speed gears with gripshift controls

Alloy silver rims

'V' style brakes

Frame size 16" 19" 22"



MISSION 18

SCIMITAR



Model 2504

- Hi tensile steel dual suspension
- Twin tube 'Y' design frame
- Suspension fork
- Shimano 21 speed gears with gripshift controls
- Riser style handlebars
- Alloy silver rims
- 'V' style brakes
- Frame size 18"



FORCE



Model 2505

- Hi tensile steel dual suspension
- Twin tube 'Y' design frame
- Oversize leading axle suspension fork
- Shimano 21 speed gears with gripshift controls
- Sealed roller bearing front alloy hub
- Alloy brake levers, double wall alloy rims
- Front disc brake
- Frame size 18"



STORM



Model 2506

Oversize elliptical hi tensile steel womens frame

Hi tensile oversize steel fork

Shimano 18 speed gears with gripshift controls

Alloy silver rims

'V' style brakes

Frame size 15" 17" 20"



HAWAII



Model 2507

Oversize elliptical Hi tensile steel womens frame

Suspension fork

Shimano 18 speed gears with gripshift controls

Alloy silver rims

'V' style brakes

Frame size 15" 17" 20"

CYCLONE



Model 2502

Oversize elliptical hi tensile steel frame

Suspension fork

Shimano 21 speed gears with gripshift controls

Riser style handlebars

Alloy silver rims

'V' style brakes

Frame size 16" 19" 22"



REFLEX 18



Model 2503

Hi tensile steel dual suspension 'Y' frame

Suspension fork

Shimano 18 speed gears with gripshift controls

Riser style handlebars

Alloy silver rims

'V' style brakes

Frame size 18"

WARRANTY

Should any original component incorporated prove defective - in terms of material or workmanship - within its warranty period, Falcon Cycles will replace it. Warranty periods for components are as follows:

Rigid frames and forks:-

Lifetime warranty.

Suspension frames and forks:- 1 year.

All other components:- 1 YEAR from date of retail purchase.

All other components:-

1 YEAR from date of retail purchase.

This warranty does not include labour and transportation charge. The company can accept no responsibility for consequential or special damages.

This warranty applies only to the original retail purchaser who must produce proof of purchase in order to validate any claim.

This warranty applies only in the case of defective components and does not cover the effects of normal wear or damage caused by accident, abuse, excessive loads, neglect, improper assembly, improper maintenance or the addition of any item inconsistent with the original intended use of the bicycle.

No bicycle is indestructible and no claims can be accepted for damage caused by improper use, competition use, stunt riding, ramp jumping, leaping or similar activities.

Claims must be submitted through your retailer. Your statutory rights are not affected by the foregoing.

Our bicycles conform to BS 6102/1 as set by the British Institute Testing Services. We reserve the right to change or amend any specification without notice. All information and specifications within this brochure are correct at time of going to press.

Falcon Cycles Limited, P.O. Box 3, Bridge Street, BRIGG, North Lincolnshire, England DN20 8PB.

Telephone: (01652) 656000.

Fax: (01652) 650040

<http://www.falconcycles.co.uk>

Design by Ark Design

<http://www.ark-web.com>

Model 2510

Hi tensile steel dual suspension 'Y' frame

Suspension forks

Shimano 18 speed gears with gripshift controls

Riser style handlebars

'V' style brakes

Frame size 18"

Silver alloy rims



SAVAGE

Model 2509



Model 2508 / 2509

Hi tensile steel lightweight

Town & Trail frame design

Shimano 18 speed gears with gripshift controls

'V' style brakes and alloy silver rims

Fitted with mudguards and rear carrier

2508 Frame size 21" 23" 2509 Frame size 18" 20"

Model 2508



RICHMOND